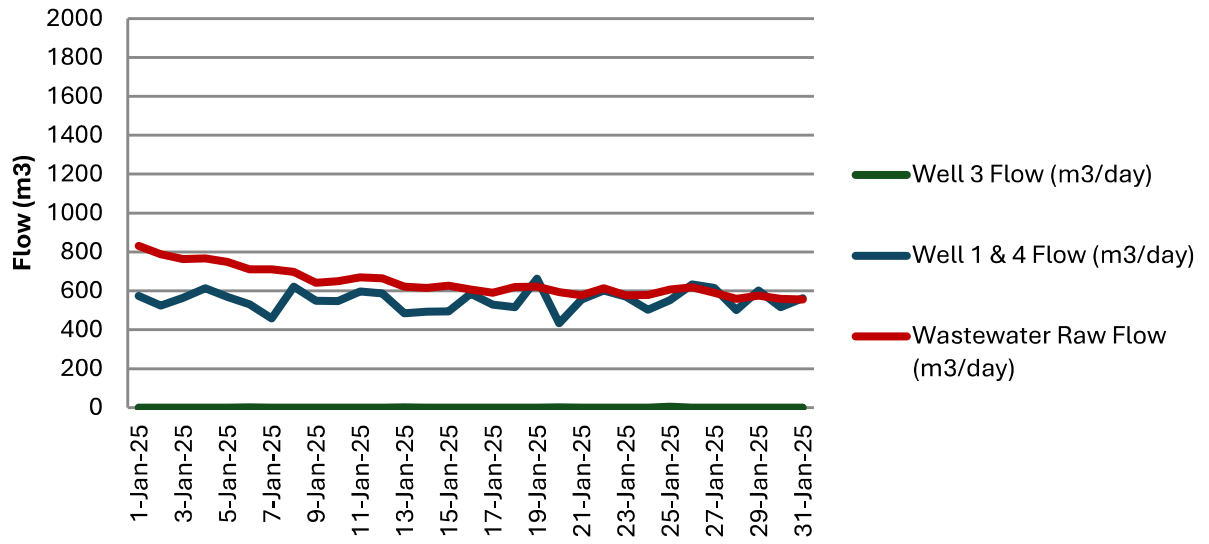


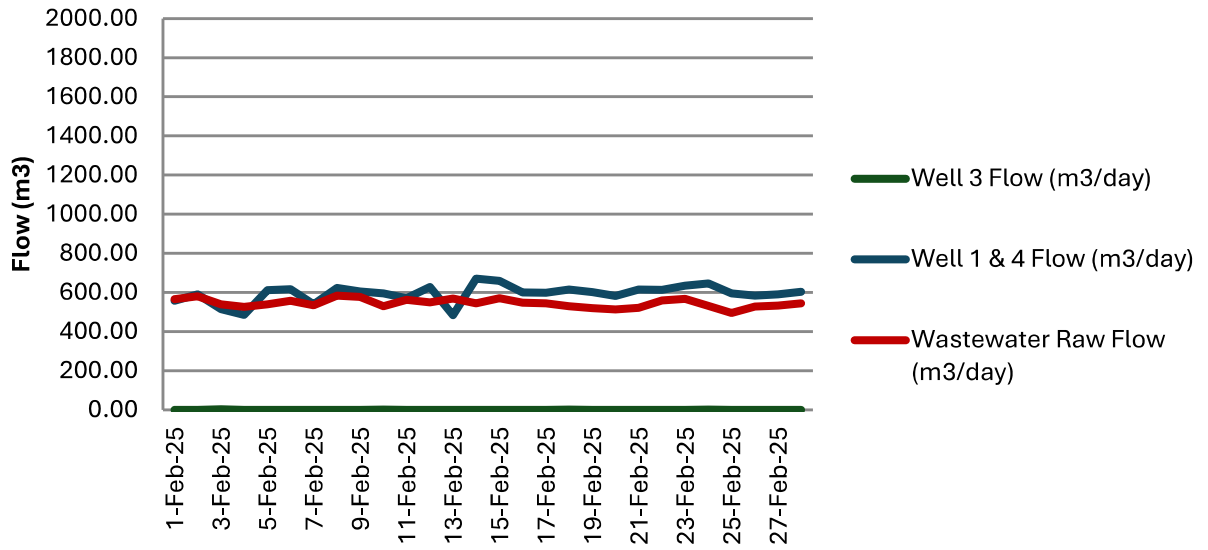
Date	Well 3 Flow (m ³ /day)	Well 1 & 4 Flow (m ³ /day)	Wastewater Raw Flow (m ³ /day)
1-Jan-25	0	575	831
2-Jan-25	0	524	789
3-Jan-25	0	564	763
4-Jan-25	0	613	766
5-Jan-25	0	570	748
6-Jan-25	2	531	710
7-Jan-25	0	458	711
8-Jan-25	0	622	698
9-Jan-25	0	550	641
10-Jan-25	0	547	650
11-Jan-25	0	597	669
12-Jan-25	0	587	664
13-Jan-25	2	485	622
14-Jan-25	0	494	615
15-Jan-25	0	495	626
16-Jan-25	0	585	606
17-Jan-25	0	530	590
18-Jan-25	0	516	620
19-Jan-25	0	663	622
20-Jan-25	2	433	594
21-Jan-25	0	555	577
22-Jan-25	0	603	614
23-Jan-25	0	570	577
24-Jan-25	0	503	578
25-Jan-25	5	553	607
26-Jan-25	0	633	619
27-Jan-25	0	614	590
28-Jan-25	0	501	559
29-Jan-25	0	602	575
30-Jan-25	0	516	559
31-Jan-25	0	562	555

Havelock Flow Data - January 2025



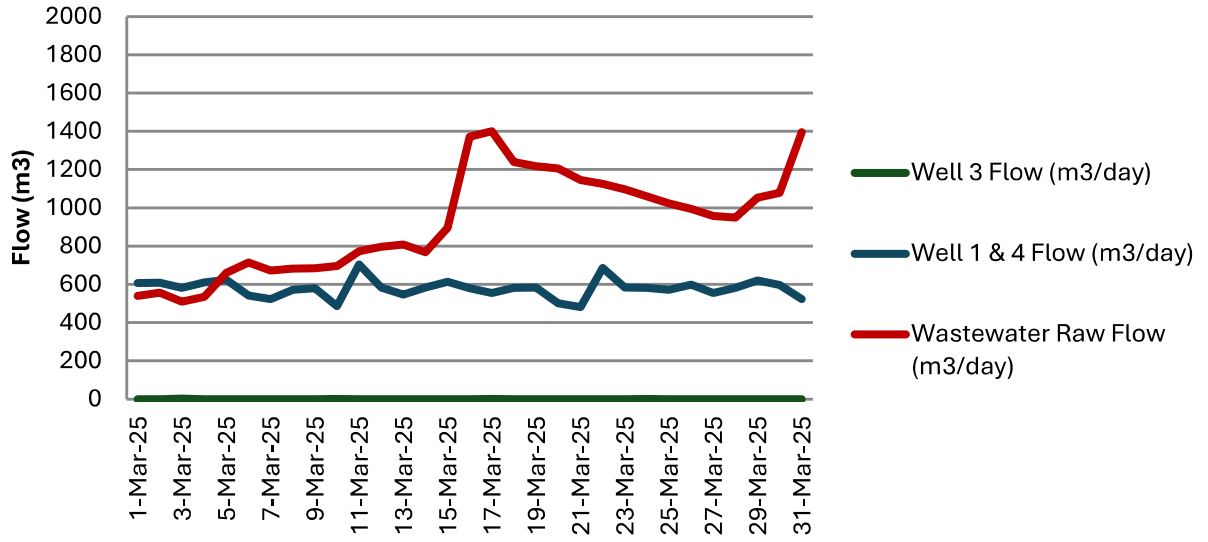
Date	Well 3 Flow (m ³ /day)	Well 1 & 4 Flow (m ³ /day)	Wastewater Raw Flow (m ³ /day)
1-Feb-25	0.00	557	566
2-Feb-25	0.00	590	581
3-Feb-25	3.00	516	539
4-Feb-25	0.00	485	527
5-Feb-25	0.00	611	539
6-Feb-25	0.00	617	557
7-Feb-25	0.00	540	534
8-Feb-25	0.00	623	584
9-Feb-25	0.00	605	578
10-Feb-25	1.00	595	529
11-Feb-25	0.00	571	562
12-Feb-25	0.00	627	549
13-Feb-25	0.00	483	569
14-Feb-25	0.00	671	545
15-Feb-25	0.00	659	571
16-Feb-25	0.00	601	548
17-Feb-25	0.00	598	544
18-Feb-25	1.00	614	530
19-Feb-25	0.00	602	520
20-Feb-25	0.00	582	514
21-Feb-25	0.00	615	522
22-Feb-25	0.00	613	559
23-Feb-25	0.00	634	567
24-Feb-25	1.00	647	531
25-Feb-25	0.00	595	495
26-Feb-25	0.00	584	528
27-Feb-25	0.00	591	533
28-Feb-25	0.00	603	544

Havelock Flow Data - February 2025



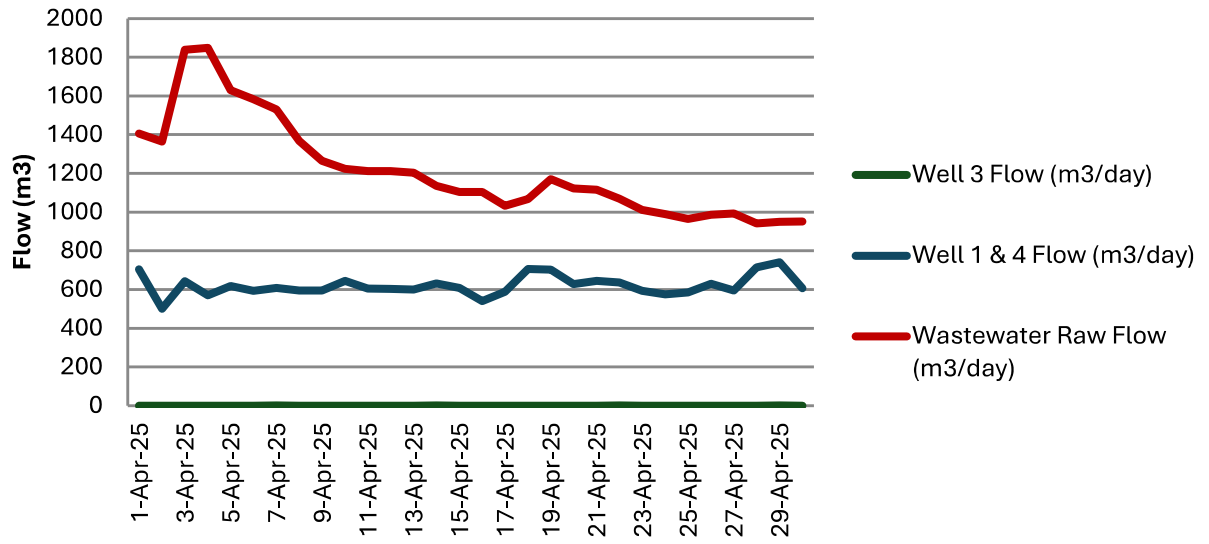
Date	Well 3 Flow (m ³ /day)	Well 1 & 4 Flow (m ³ /day)	Wastewater Raw Flow (m ³ /day)
1-Mar-25	0	606	540
2-Mar-25	0	608	556
3-Mar-25	2	581	510
4-Mar-25	0	611	534
5-Mar-25	0	624	660
6-Mar-25	0	541	714
7-Mar-25	0	522	672
8-Mar-25	0	572	683
9-Mar-25	0	580	684
10-Mar-25	1	486	696
11-Mar-25	0	705	773
12-Mar-25	0	584	797
13-Mar-25	0	545	808
14-Mar-25	0	584	767
15-Mar-25	0	613	895
16-Mar-25	0	581	1372
17-Mar-25	1	554	1401
18-Mar-25	0	582	1240
19-Mar-25	0	583	1218
20-Mar-25	0	502	1205
21-Mar-25	0	481	1146
22-Mar-25	0	686	1125
23-Mar-25	0	583	1096
24-Mar-25	1	582	1059
25-Mar-25	0	572	1023
26-Mar-25	0	598	995
27-Mar-25	0	554	957
28-Mar-25	0	581	949
29-Mar-25	0	620	1053
30-Mar-25	0	597	1078
31-Mar-25	0	523	1396

Havelock Flow Data - March 2025



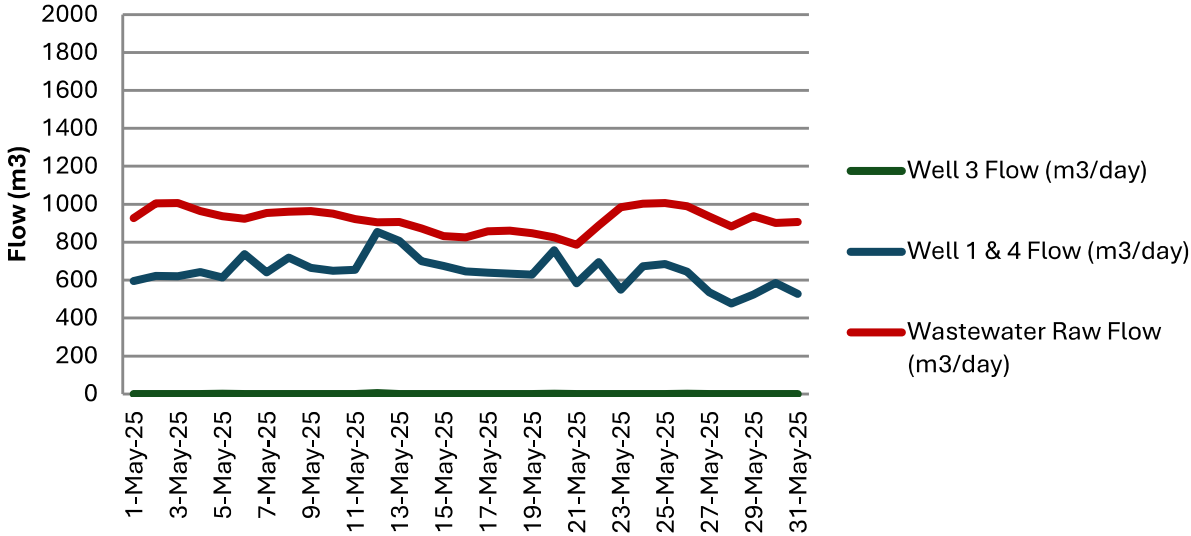
Date	Well 3 Flow (m ³ /day)	Well 1 & 4 Flow (m ³ /day)	Wastewater Raw Flow (m ³ /day)
1-Apr-25	0	705	1406
2-Apr-25	0	500	1364
3-Apr-25	0	643	1839
4-Apr-25	0	569	1849
5-Apr-25	0	619	1629
6-Apr-25	0	594	1584
7-Apr-25	1	609	1530
8-Apr-25	0	594	1368
9-Apr-25	0	595	1264
10-Apr-25	0	645	1224
11-Apr-25	0	604	1211
12-Apr-25	0	603	1212
13-Apr-25	0	600	1204
14-Apr-25	1	632	1135
15-Apr-25	0	607	1104
16-Apr-25	0	541	1104
17-Apr-25	0	588	1032
18-Apr-25	0	706	1067
19-Apr-25	0	703	1170
20-Apr-25	0	628	1123
21-Apr-25	0	644	1115
22-Apr-25	2	637	1070
23-Apr-25	0	593	1011
24-Apr-25	0	575	989
25-Apr-25	0	585	965
26-Apr-25	0	629	987
27-Apr-25	0	594	993
28-Apr-25	0	715	941
29-Apr-25	1	741	950
30-Apr-25	0	607	952

Havelock Flow Data - April 2025



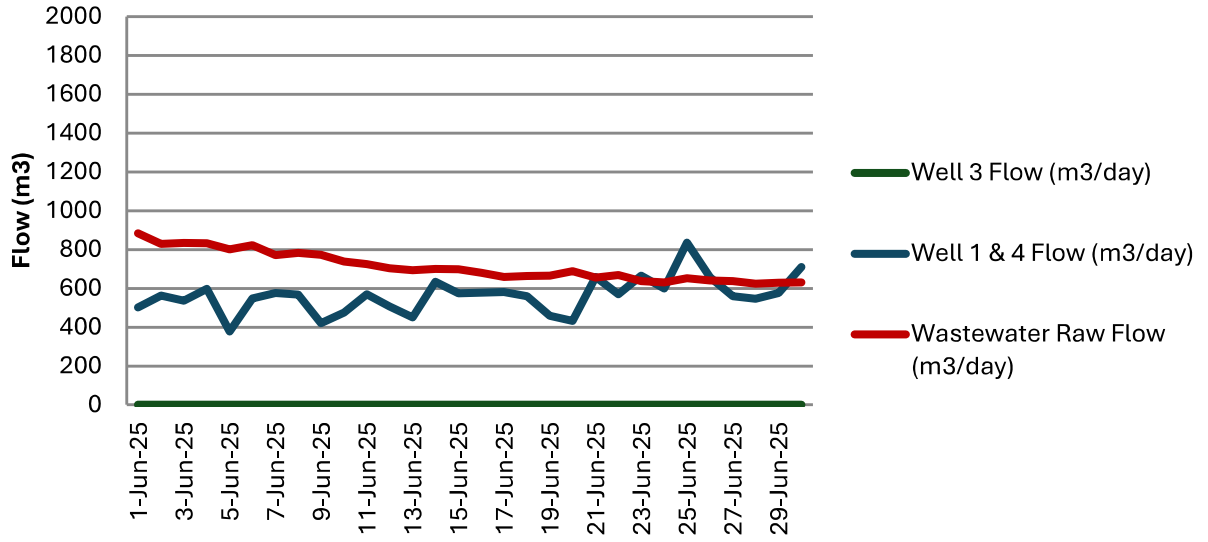
Date	Well 3 Flow (m ³ /day)	Well 1 & 4 Flow (m ³ /day)	Wastewater Raw Flow (m ³ /day)
1-May-25	0	595	926
2-May-25	0	622	1004
3-May-25	0	620	1006
4-May-25	0	642	964
5-May-25	1	614	937
6-May-25	0	737	924
7-May-25	0	640	954
8-May-25	0	719	961
9-May-25	0	664	964
10-May-25	0	649	951
11-May-25	0	654	922
12-May-25	4	854	904
13-May-25	0	807	907
14-May-25	0	700	873
15-May-25	0	675	832
16-May-25	0	645	825
17-May-25	0	639	857
18-May-25	0	634	860
19-May-25	0	629	847
20-May-25	1	758	825
21-May-25	0	584	787
22-May-25	0	695	888
23-May-25	0	550	984
24-May-25	0	673	1003
25-May-25	0	685	1006
26-May-25	1	645	989
27-May-25	0	536	935
28-May-25	0	478	882
29-May-25	0	524	937
30-May-25	0	586	902
31-May-25	0	528	906

Havelock Flow Data - May 2025



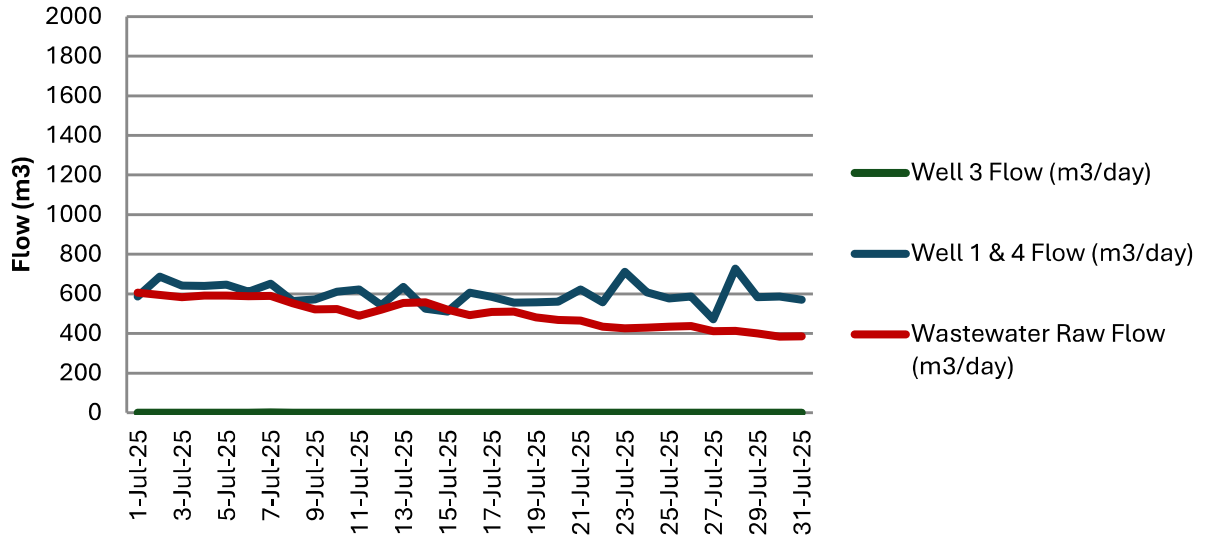
Date	Well 3 Flow (m ³ /day)	Well 1 & 4 Flow (m ³ /day)	Wastewater Raw Flow (m ³ /day)
1-Jun-25	0	502	883
2-Jun-25	0	563	829
3-Jun-25	0	536	834
4-Jun-25	0	597	833
5-Jun-25	0	378	801
6-Jun-25	0	548	823
7-Jun-25	0	577	771
8-Jun-25	0	567	782
9-Jun-25	1	421	772
10-Jun-25	0	475	738
11-Jun-25	0	570	725
12-Jun-25	0	506	703
13-Jun-25	0	451	694
14-Jun-25	0	634	700
15-Jun-25	0	575	699
16-Jun-25	1	578	681
17-Jun-25	0	580	658
18-Jun-25	0	559	663
19-Jun-25	0	458	665
20-Jun-25	0	432	689
21-Jun-25	0	658	656
22-Jun-25	0	570	668
23-Jun-25	0	666	637
24-Jun-25	0	600	631
25-Jun-25	0	835	652
26-Jun-25	0	658	641
27-Jun-25	0	559	638
28-Jun-25	0	547	624
29-Jun-25	0	576	629
30-Jun-25	1	711	631

Havelock Flow Data - June 2025



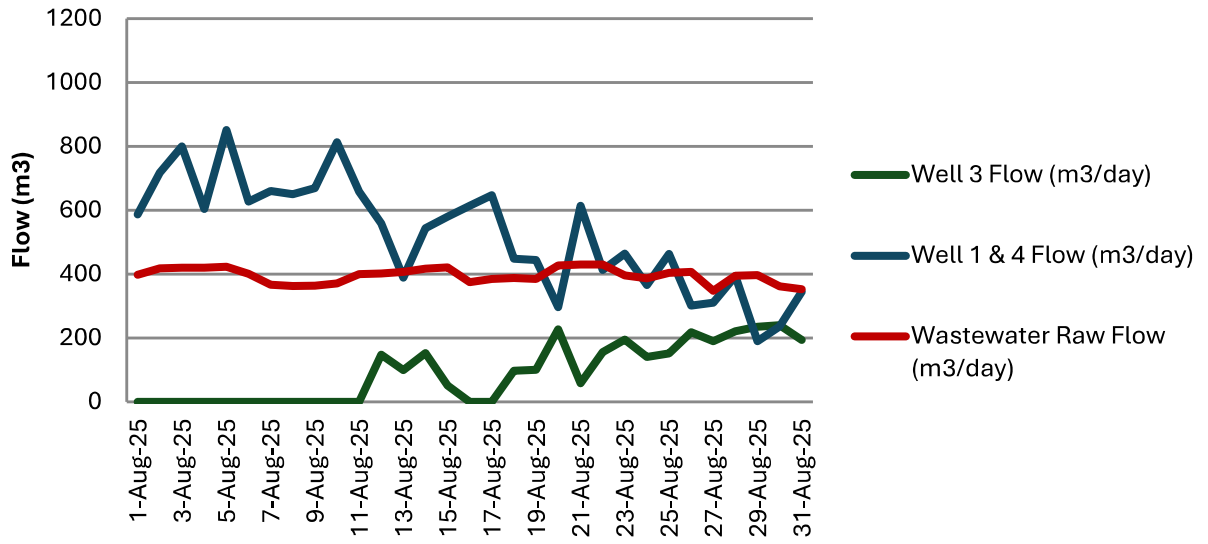
Date	Well 3 Flow (m ³ /day)	Well 1 & 4 Flow (m ³ /day)	Wastewater Raw Flow (m ³ /day)
1-Jul-25	0	587	606
2-Jul-25	0	687	595
3-Jul-25	0	641	584
4-Jul-25	0	641	591
5-Jul-25	0	647	592
6-Jul-25	0	611	588
7-Jul-25	2	651	590
8-Jul-25	0	563	552
9-Jul-25	0	572	522
10-Jul-25	0	612	524
11-Jul-25	0	623	489
12-Jul-25	0	544	520
13-Jul-25	0	635	555
14-Jul-25	1	526	557
15-Jul-25	0	510	520
16-Jul-25	0	606	493
17-Jul-25	0	584	509
18-Jul-25	0	555	511
19-Jul-25	0	558	481
20-Jul-25	0	560	469
21-Jul-25	0	622	466
22-Jul-25	0	557	434
23-Jul-25	0	712	427
24-Jul-25	0	608	429
25-Jul-25	0	577	435
26-Jul-25	0	586	437
27-Jul-25	0	472	412
28-Jul-25	1	727	414
29-Jul-25	0	583	401
30-Jul-25	0	587	384
31-Jul-25	0	571	386

Havelock Flow Data - July 2025



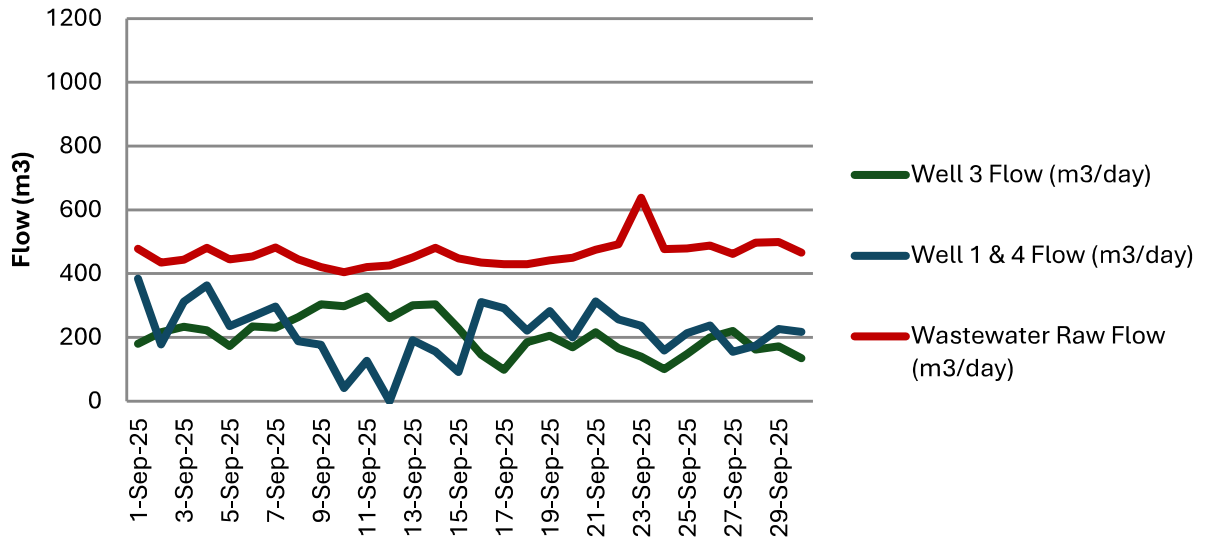
Date	Well 3 Flow (m ³ /day)	Well 1 & 4 Flow (m ³ /day)	Wastewater Raw Flow (m ³ /day)
1-Aug-25	0	586	398
2-Aug-25	0	717	418
3-Aug-25	0	800	420
4-Aug-25	0	603	420
5-Aug-25	0	850	423
6-Aug-25	0	627	401
7-Aug-25	0	660	366
8-Aug-25	0	650	362
9-Aug-25	0	669	363
10-Aug-25	0	813	370
11-Aug-25	0	658	400
12-Aug-25	147	559	402
13-Aug-25	100	388	407
14-Aug-25	153	543	417
15-Aug-25	51	580	421
16-Aug-25	0	614	374
17-Aug-25	0	647	384
18-Aug-25	97	448	387
19-Aug-25	100	444	384
20-Aug-25	227	296	427
21-Aug-25	58	613	430
22-Aug-25	155	412	430
23-Aug-25	195	464	396
24-Aug-25	141	366	386
25-Aug-25	152	463	404
26-Aug-25	218	301	407
27-Aug-25	189	310	347
28-Aug-25	220	394	395
29-Aug-25	234	189	397
30-Aug-25	239	236	361
31-Aug-25	193	344	352

Havelock Flow Data - August 2025



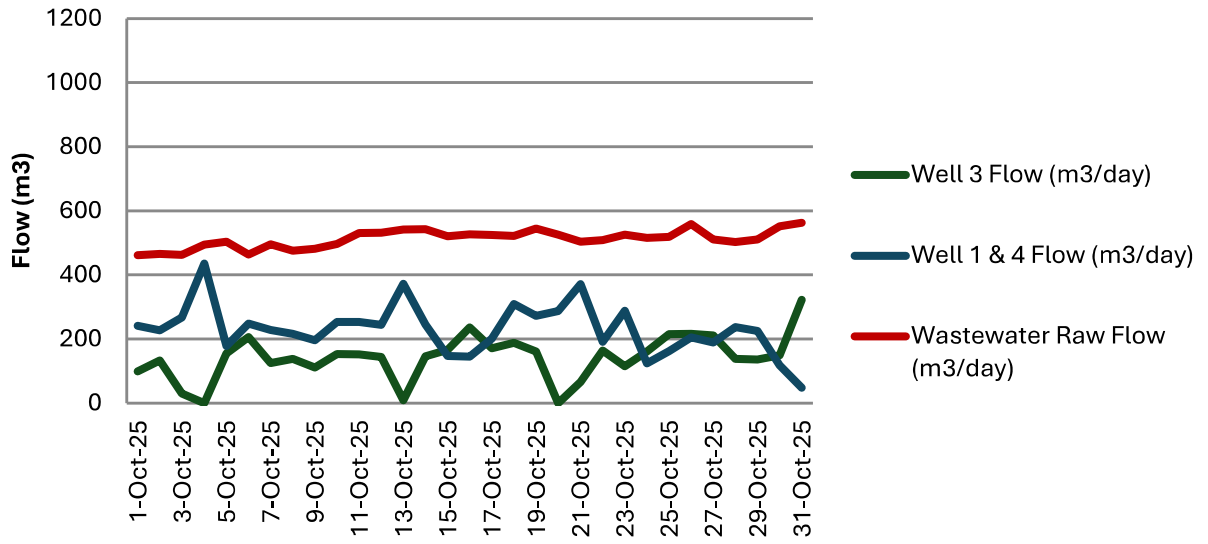
Date	Well 3 Flow (m ³ /day)	Well 1 & 4 Flow (m ³ /day)	Wastewater Raw Flow (m ³ /day)
1-Sep-25	180	384	377
2-Sep-25	216	178	378
3-Sep-25	234	312	358
4-Sep-25	222	363	399
5-Sep-25	173	235	365
6-Sep-25	234	266	376
7-Sep-25	230	296	383
8-Sep-25	264	188	365
9-Sep-25	304	177	336
10-Sep-25	297	42	320
11-Sep-25	328	126	329
12-Sep-25	261	0	328
13-Sep-25	300	191	366
14-Sep-25	303	156	382
15-Sep-25	228	91	367
16-Sep-25	145	310	350
17-Sep-25	98	292	345
18-Sep-25	185	221	340
19-Sep-25	205	282	354
20-Sep-25	169	200	365
21-Sep-25	216	313	376
22-Sep-25	166	256	406
23-Sep-25	139	237	565
24-Sep-25	100	158	384
25-Sep-25	148	213	385
26-Sep-25	200	237	407
27-Sep-25	220	155	369
28-Sep-25	162	174	404
29-Sep-25	172	226	380
30-Sep-25	134	217	380

Havelock Flow Data - September 2025



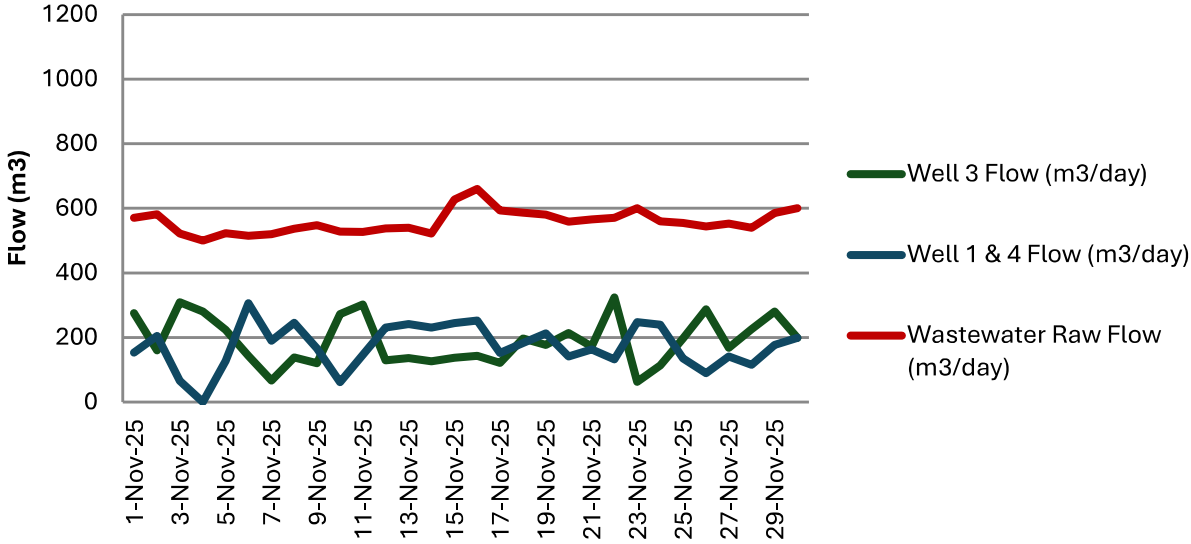
Date	Well 3 Flow (m ³ /day)	Well 1 & 4 Flow (m ³ /day)	Wastewater Raw Flow (m ³ /day)
1-Oct-25	99	241	462
2-Oct-25	134	227	466
3-Oct-25	30	267	463
4-Oct-25	0	435	495
5-Oct-25	155	178	504
6-Oct-25	206	249	464
7-Oct-25	125	228	496
8-Oct-25	138	216	476
9-Oct-25	111	196	482
10-Oct-25	153	254	497
11-Oct-25	152	253	531
12-Oct-25	144	244	532
13-Oct-25	9	372	542
14-Oct-25	146	245	543
15-Oct-25	166	147	521
16-Oct-25	236	145	527
17-Oct-25	171	201	525
18-Oct-25	188	309	522
19-Oct-25	161	272	545
20-Oct-25	0	288	526
21-Oct-25	66	372	504
22-Oct-25	164	192	509
23-Oct-25	115	288	526
24-Oct-25	161	124	516
25-Oct-25	216	162	519
26-Oct-25	216	205	559
27-Oct-25	211	189	511
28-Oct-25	138	237	503
29-Oct-25	136	226	511
30-Oct-25	149	118	552
31-Oct-25	322	48	563
Min	0	48	462
Max	322	435	563
Average	142	230	513

Havelock Flow Data - October 2025



Date	Well 3 Flow (m ³ /day)	Well 1 & 4 Flow (m ³ /day)	Wastewater Raw Flow (m ³ /day)
1-Nov-25	276	153	571
2-Nov-25	160	205	581
3-Nov-25	309	65	522
4-Nov-25	281	0	500
5-Nov-25	224	127	523
6-Nov-25	143	307	515
7-Nov-25	67	190	520
8-Nov-25	138	245	537
9-Nov-25	120	166	548
10-Nov-25	272	61	528
11-Nov-25	302	146	527
12-Nov-25	129	231	538
13-Nov-25	136	242	540
14-Nov-25	126	230	522
15-Nov-25	137	244	627
16-Nov-25	143	252	660
17-Nov-25	122	152	593
18-Nov-25	196	183	586
19-Nov-25	177	213	580
20-Nov-25	214	141	559
21-Nov-25	173	163	566
22-Nov-25	324	133	571
23-Nov-25	63	248	600
24-Nov-25	113	240	560
25-Nov-25	197	135	555
26-Nov-25	288	89	544
27-Nov-25	168	142	553
28-Nov-25	225	116	540
29-Nov-25	281	177	585
30-Nov-25	199	198	600
Min	63	0	500
Max	324	307	660
Average	190	173	558

Havelock Flow Data - November 2025



Date	Well 3 Flow (m ³ /day)	Well 1 & 4 Flow (m ³ /day)	Wastewater Raw Flow (m ³ /day)
1-Dec-25	207	122	565
2-Dec-25	180	191	573
3-Dec-25	298	166	580
4-Dec-25	0	394	599
5-Dec-25	0	438	594
6-Dec-25	0	435	590
7-Dec-25	0	451	614
8-Dec-25	2	391	554
9-Dec-25	0	399	562
10-Dec-25	0	404	570
11-Dec-25	0	422	545
12-Dec-25	0	424	583
13-Dec-25	0	513	603
14-Dec-25	0	455	627
15-Dec-25	1	462	567
16-Dec-25	0	445	555
17-Dec-25	0	375	561
18-Dec-25	0	452	565
19-Dec-25	0	457	706
20-Dec-25	0	432	691
21-Dec-25	0	459	699
22-Dec-25	1	454	656
23-Dec-25	0	433	650
24-Dec-25	0	446	656
25-Dec-25	0	443	633
26-Dec-25	0	431	652
27-Dec-25	0	434	645
28-Dec-25	0	426	661
29-Dec-25	2	431	750
30-Dec-25	0	435	689
31-Dec-25	0	423	677
Min	0	122	545
Max	298	513	750
Average	22	408	618

Havelock Flow Data - December 2025

