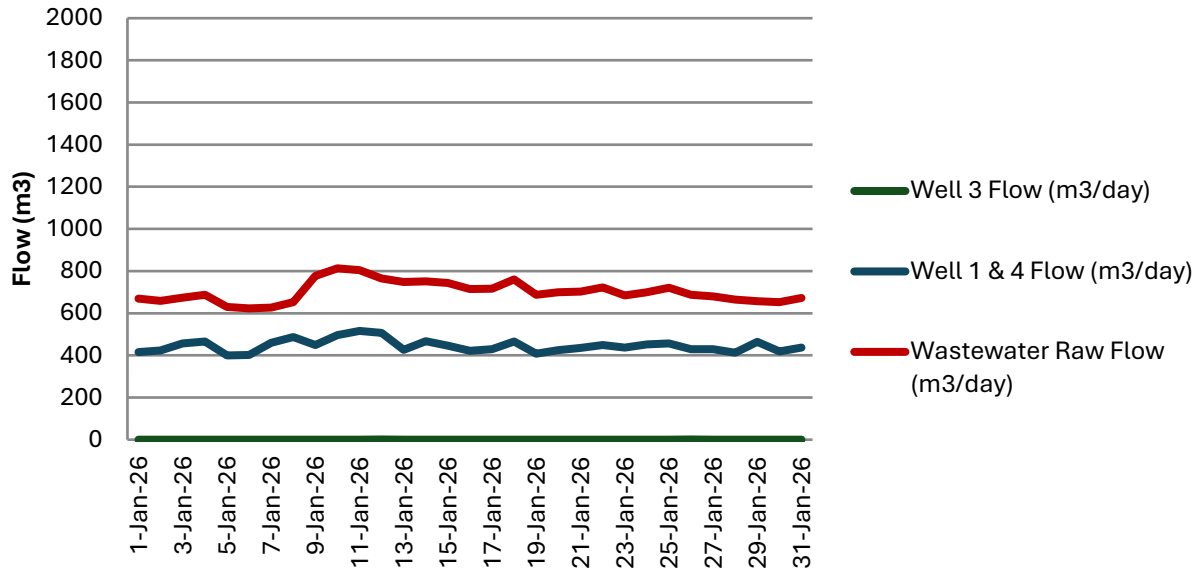


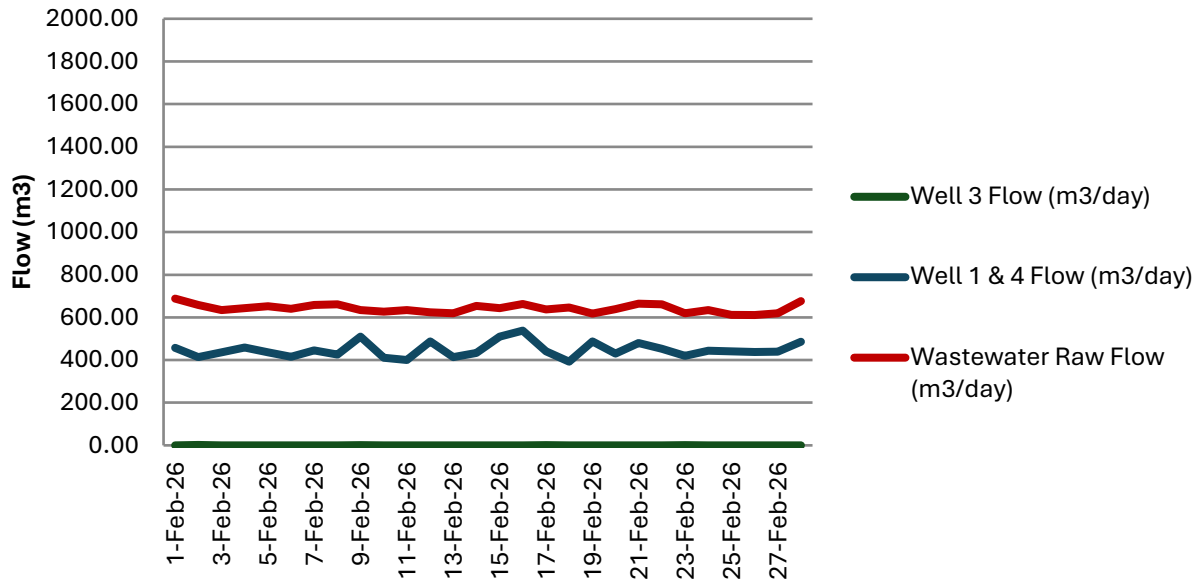
Date	Well 3 Flow (m <sup>3</sup> /day)	Well 1 & 4 Flow (m <sup>3</sup> /day)	Wastewater Raw Flow (m <sup>3</sup> /day)
1-Jan-26	0	416	670
2-Jan-26	0	424	659
3-Jan-26	0	457	674
4-Jan-26	0	466	687
5-Jan-26	0	400	630
6-Jan-26	0	402	623
7-Jan-26	0	460	626
8-Jan-26	0	487	653
9-Jan-26	0	449	777
10-Jan-26	0	496	813
11-Jan-26	0	516	804
12-Jan-26	1	506	765
13-Jan-26	0	426	748
14-Jan-26	0	467	751
15-Jan-26	0	446	744
16-Jan-26	0	421	715
17-Jan-26	0	430	717
18-Jan-26	0	466	761
19-Jan-26	0	408	688
20-Jan-26	0	424	700
21-Jan-26	0	435	702
22-Jan-26	0	449	723
23-Jan-26	0	436	685
24-Jan-26	0	453	699
25-Jan-26	0	456	721
26-Jan-26	1	430	687
27-Jan-26	0	429	680
28-Jan-26	0	413	665
29-Jan-26	0	464	657
30-Jan-26	0	418	652
31-Jan-26	0	437	673
<b>Min</b>	<b>0</b>	<b>400</b>	<b>623</b>
<b>Max</b>	<b>1</b>	<b>516</b>	<b>813</b>
<b>Average</b>	<b>0</b>	<b>445</b>	<b>702</b>

# Havelock Flow Data - January 2026



Date	Well 3 Flow (m <sup>3</sup> /day)	Well 1 & 4 Flow (m <sup>3</sup> /day)	Wastewater Raw Flow (m <sup>3</sup> /day)
1-Feb-26	0.00	458	688
2-Feb-26	2.00	413	659
3-Feb-26	0.00	436	635
4-Feb-26	0.00	458	644
5-Feb-26	0.00	436	653
6-Feb-26	0.00	415	640
7-Feb-26	0.00	446	659
8-Feb-26	0.00	426	662
9-Feb-26	1.00	510	635
10-Feb-26	0.00	411	627
11-Feb-26	0.00	400	634
12-Feb-26	0.00	488	624
13-Feb-26	0.00	414	620
14-Feb-26	0.00	434	654
15-Feb-26	0.00	509	644
16-Feb-26	0.00	538	663
17-Feb-26	1.00	441	638
18-Feb-26	0.00	392	647
19-Feb-26	0.00	487	618
20-Feb-26	0.00	431	639
21-Feb-26	0.00	480	665
22-Feb-26	0.00	453	661
23-Feb-26	1.00	420	619
24-Feb-26	0.00	443	635
25-Feb-26	0.00	441	612
26-Feb-26	0.00	437	611
27-Feb-26	0.00	440	620
28-Feb-26	0.00	485	677
<b>Min</b>	<b>0</b>	<b>392</b>	<b>611</b>
<b>Max</b>	<b>2</b>	<b>538</b>	<b>688</b>
<b>Average</b>	<b>0</b>	<b>448</b>	<b>642</b>

## Havelock Flow Data - February 2026



Date	Well 3 Flow (m <sup>3</sup> /day)	Well 1 & 4 Flow (m <sup>3</sup> /day)	Wastewater Raw Flow (m <sup>3</sup> /day)
1-Mar-26	0	475	669
2-Mar-26	0	474	631
3-Mar-26	0	457	648
4-Mar-26	0	437	634
5-Mar-26	0	477	677
6-Mar-26	0	437	644
7-Mar-26	0	441	893
8-Mar-26	0	435	1173
9-Mar-26	0	497	1172
10-Mar-26	76	449	1236
11-Mar-26	0	423	1409
12-Mar-26	0	464	1360
13-Mar-26	0	376	1284
14-Mar-26	0	487	1244
15-Mar-26	0	455	1236
16-Mar-26	0	461	1317
17-Mar-26	0	447	1324
18-Mar-26	47	434	1262
19-Mar-26	0	421	1252
20-Mar-26	0	403	1232
21-Mar-26	0	420	1217
22-Mar-26	0	442	1250
23-Mar-26	0	404	1200
24-Mar-26	0	390	1155
25-Mar-26	0	409	1182
26-Mar-26	0	387	1190
27-Mar-26	0	408	1175
28-Mar-26	0	431	1187
29-Mar-26	0	423	1190
30-Mar-26	59	388	1184
31-Mar-26	0	379	1376
<b>Min</b>	<b>0</b>	<b>376</b>	<b>631</b>
<b>Max</b>	<b>76</b>	<b>497</b>	<b>1409</b>
<b>Average</b>	<b>6</b>	<b>433</b>	<b>1116</b>

# Havelock Flow Data - March 2026

