



**Township of Havelock-Belmont-  
Methuen**

**Road Sign Inventory and  
Review Report - 2015**

**D.M. Wills Project Number 15-4550**

**D.M. Wills Associates Limited**  
PARTNERS IN ENGINEERING

Peterborough  
North Bay

**Final Report**

**August, 2016**

## Table of Contents

<b>1.0 Purpose, Background and Study Method</b> .....	<b>2</b>
Purpose .....	2
Study Objectives .....	2
Study Methodology .....	2
<b>2.0 The Sign Inventory</b> .....	<b>3</b>
<b>3.0 Intersection Recommendations</b> .....	<b>3</b>
<b>4.0 Intersection Control Review</b> .....	<b>3</b>
Burnt Dam Road, Preston Road, and 6 <sup>th</sup> Line Intersection.....	4
Baker Road and North School Road Intersection .....	5
North School Road and 10 <sup>th</sup> Concession Intersection.....	6
Church Road and 10 <sup>th</sup> Concession Intersection .....	7
Holdcroft Road and West Kosh Road Intersection .....	8
Post Road and East Post Road Intersection .....	9
All-Way Stops .....	9
<b>5.0 Rural Posted Speed Limits</b> .....	<b>10</b>
<b>6.0 Summary</b> .....	<b>13</b>

## List of Appendices

Appendix A – Signage Summary

## 1.0 Purpose, Background and Study Method

### Purpose

Effective road signage attracts motorists' attention, and efficiently conveys a message that is appropriate to motorists' needs. Improperly designed, maintained or overused signage encourages non-compliance among motorists which may have severe consequences in terms of operations or road safety.

This study was conducted as an effort to identify and correct locations with poor signage as well as maintain locations with effective signage within the Township of Havelock-Belmont-Methuen (the Township). This study was completed as part of the 2015 Road Needs Study which is contained in a separate document.

### Study Objectives

Based on the Request for Proposal and in discussion with Township staff the following three study objectives were identified:

- Inventory Township signs and identify locations with missing, inappropriate, or otherwise poor signage,
- Review signage at several intersections, and
- Review unposted speed limit policy.

### Study Methodology

The signs inventory captured the following information:

- Sign location (road/intersection, northing and easting)
- Offset from edge of travelled way
- Size
- Condition
- Description/sign code

Signs with no defects or only trivial defects were assessed to be in good condition. Signs with defects that indicated aging but were still legible and materially competent were assessed to be in fair condition. Signs that were faded, had many cracks, blisters, or otherwise severely damaged were considered to be in poor condition.

Sign recommendations have been made in reference to the Ministry of Transportation's (MTO) Ontario Traffic Manual (OTM). Sign codes, where possible, reflect current MTO coding even if the sign type or pattern is out of date. The MTO's Geometric Design Standards Manual (GDSM) was referenced for intersection design and related signage.

The comfort speed referred to in this report is taken as the Average Operating Speed as determined in the Township's 2015 Road Needs Study. This is a subjective measurement

of the average speed that the rater is comfortable travelling on a particular road, as per the MTO's Inventory Manual for Municipal Roads, 1991. Since the term "Average Operating Speed" is more often used to refer to an actual average of the speed of many vehicles on a road, the more accurate term comfort speed is adopted for this document.

## 2.0 The Sign Inventory

833 signs were recorded in the inventory. 194 signs were in poor condition, 183 were in fair condition, and 456 were in good condition. A sign inventory is provided in **Appendix A**.

As per the sign inventory, 52 new signs are recommended, 11 signs are recommended for removal for either being redundant or misleading, 185 signs are recommended for like-for-like replacement, and 17 signs have miscellaneous recommendations (from straighten post to change sign type).

## 3.0 Intersection Recommendations

The following provides a summary of recommendations for select intersection signage improvements.

## 4.0 Intersection Control Review

Two (2) intersections with existing yield control approaches were identified by Township staff for review. Township staff also asked for any uncontrolled intersections to be reviewed, of which four (4) were identified during field inspections.

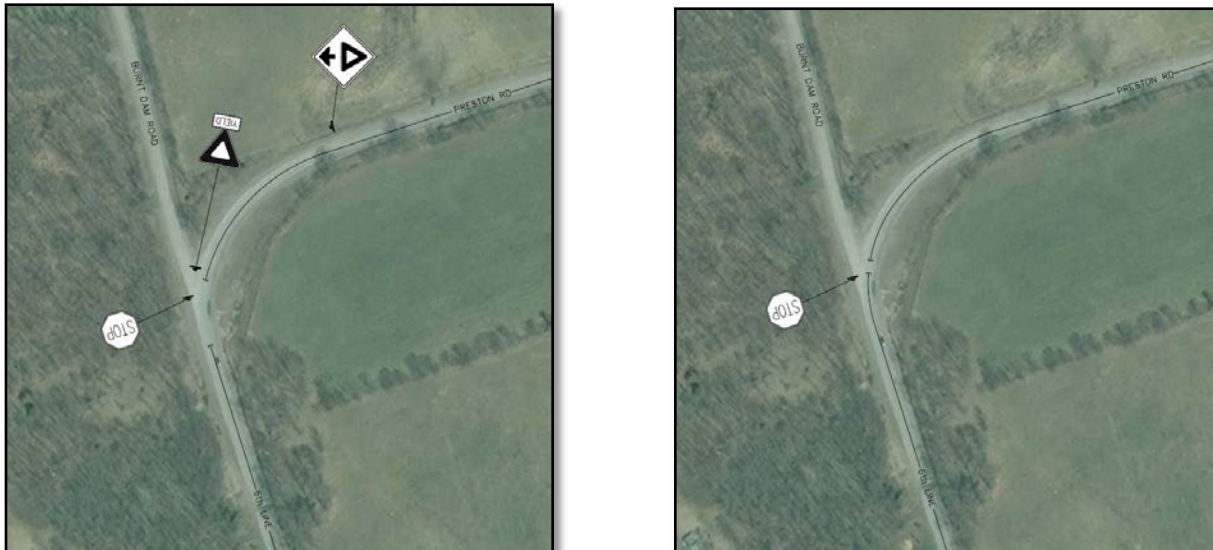
As per the GDSM, the minimum required sight distances for an uncontrolled intersection are established from the distance traveled in 3 seconds by each vehicle approaching at design speed.

As per the GDSM, the minimum required sight distances for a yield controlled intersection are established from a minimum stopping sight distance for the yield controlled leg at 20 km/h and the minimum stopping sight distance along the uncontrolled road at the design speed.

## Burnt Dam Road, Preston Road, and 6<sup>th</sup> Line Intersection

As detailed in Figure 1, the current intersection control has an unusual set-up with both a yield sign and a stop sign. The painted centerline on 6<sup>th</sup> Line and Preston Road has a wide gap throughout the intersection.

Figure 1: Current (Left) and Proposed (Right) Intersection Control at Burnt Dam Road, Preston Road, and 6<sup>th</sup> Line



Motorists entering the intersection from Preston Road would assume that they would be yielding to a vehicle entering on Burnt Dam Road which is stop controlled. The yield sign is likely intended to indicate that they must yield to oncoming traffic from 6<sup>th</sup> Line travelling to Burnt Dam Road, but this is not obvious from their perspective.

Motorists entering the intersection from 6<sup>th</sup> Line would not expect vehicles entering from Preston Road to yield to them. The intersection warning sign located on the 6<sup>th</sup> Line approach indicates the major route curving right onto Preston Road. Also, due to a vertical curve on Burnt Dam Road just beyond the intersection, the fact that they could drive straight through is not apparent until they are almost in the intersection.

Regardless of the intention of the yield sign, having a yield and stop condition in conflict is not permissible as per Book 5 of the OTM. Furthermore, this arrangement is a very rare deviance from standard and similar instances were not found.

It is recommended that the Township brings the intersection control to standard by removing the yield and yield ahead signs as in Figure 1. Realignment of the intersection to provide a 90° intersection of Burnt Dam Road with the through road is also recommended. Additionally, an extension of the centreline marking is recommended.

to provide positive guidance to motorists indicating Preston -6<sup>th</sup> Line as the through road.

### **Baker Road and North School Road Intersection**

The intersection of Baker Road and North School Road was reviewed. As illustrated in Figure 2, Baker Road currently has a yield condition.

The design speeds of North School Road and Baker Road are unknown and were thus assumed to be 60 km/h each (the comfort speed). Field observations confirm that sight distances for vehicles entering from Baker Road are adequate for a yield condition (minimum sight distances of 25 m for the yield and 85 m for the through approaches), but inadequate for an uncontrolled intersection (minimum sight distance of 50 m for each approach). Provided there is no history of collisions at this intersection, the yield control is appropriate based on available sight distances.

Figure 2: Current Intersection Control at Baker Road and North School Road

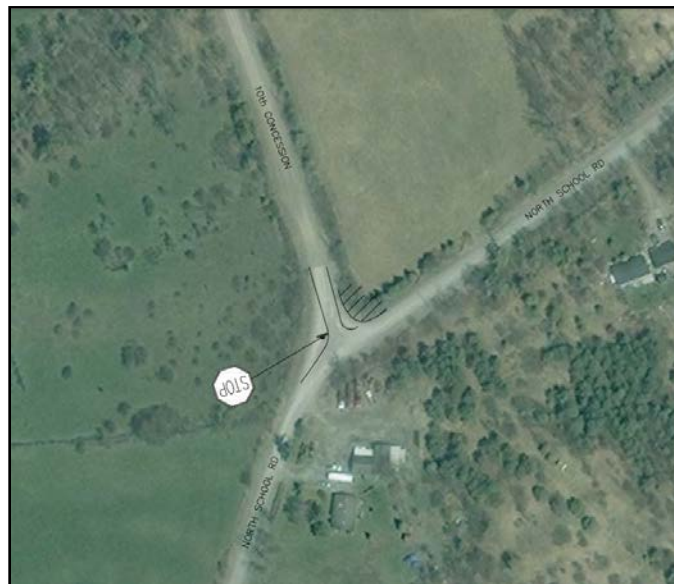


### **North School Road and 10<sup>th</sup> Concession Intersection**

The uncontrolled intersection of North School Road and 10<sup>th</sup> Concession was reviewed.

The design speeds of North School Road and 10<sup>th</sup> Concession are unknown and were thus assumed to be 60 km/h and 40 km/h respectively (the comfort speeds). Field observations confirm that sight distances for vehicles entering from 10<sup>th</sup> Concession are inadequate for both an uncontrolled intersection (minimum sight distances of 50 m for North School Road and 40 m for 10<sup>th</sup> Concession) and a yield condition (minimum sight distances of 25m for the yield and 85m for the through approaches). Therefore, a stop sign is recommended as detailed in Figure 3. It is further recommended that the wide intersection “throat” be regraded to promote an approach angle to the intersection nearing 90° to improve sight distances for motorists at the proposed stop control. Clearing of vegetation on the northeast corner of the intersection will also improve sight distances.

Figure 3: Proposed Intersection Control at North School Road and 10<sup>th</sup> Concession

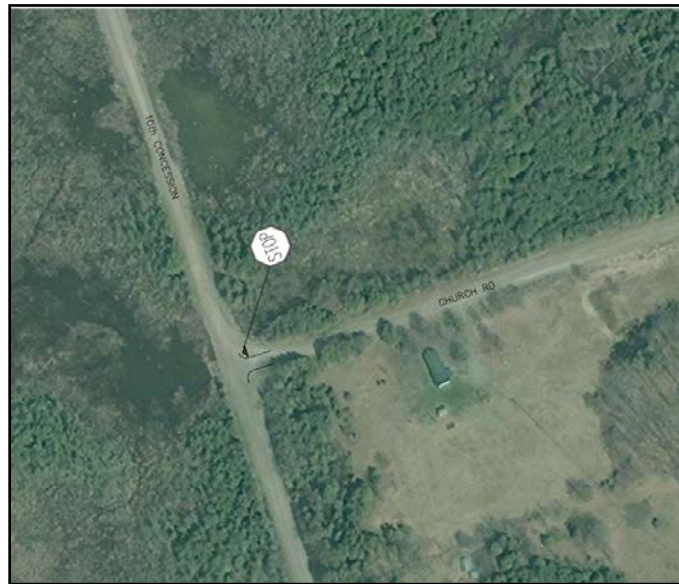


### Church Road and 10<sup>th</sup> Concession Intersection

The uncontrolled intersection of Church Road and 10<sup>th</sup> Concession was reviewed.

The design speeds of Church Road and 10<sup>th</sup> Concession are unknown and were thus assumed to be 60 km/h each (the comfort speed). Field observations confirm that sight distances for vehicles entering from Church Road are inadequate for both an uncontrolled intersection (minimum sight distance of 50 m for each approach) and a yield condition (minimum sight distances of 25m for the yield and 85m for the through approaches). Therefore, a stop sign is recommended as detailed in Figure 4. It is further recommended that the wide intersection "throat" be regraded to promote an approach angle to the intersection of 90° to improve sight distances for motorists at the proposed stop control.

Figure 4: Proposed Intersection Control at Church Road and 10<sup>th</sup> Concession





## Holdcroft Road and West Kosh Road Intersection

The uncontrolled intersection of Holdcroft Road and West Kosh Road was reviewed.

The design speeds of Holdcroft Road and West Kosh Road are unknown and were thus assumed to be 60 km/h each (the comfort speed). Field observations confirm that sight distances for vehicles entering from Holdcroft Road are inadequate for both an uncontrolled intersection (minimum sight distance of 50 m for each approach) and a yield condition (minimum sight distances of 25m for the yield and 85m for the through approaches). Therefore, a stop sign recommended as detailed in Figure 5. It is further recommended that the wide intersection “throat” be regraded to promote an approach angle to the intersection nearing 90° to improve sight distances for motorists at the proposed stop control.

Figure 5: Proposed Intersection Control at Holdcroft Road and West Kosh Road



## Post Road and East Post Road Intersection

The uncontrolled intersection of Post Road and East Post Road was reviewed.

The design speeds of Post Road and East Post Road are unknown and were thus assumed to be 60 km/h each (the comfort speed). Field observations confirm that sight distances for vehicles entering from East Post Road are inadequate for both an uncontrolled intersection (minimum sight distance of 50 m for each approach) and a yield condition (minimum sight distances of 25m for the yield and 85m for the through approaches). Therefore, a stop sign is recommended as detailed in Figure 6.

Figure 6: Proposed Intersection Control at Post Road and East Post Road



## All-Way Stops

There are three low-volume, all-way stops in Havelock (William Street and Mathison Street East, Mathison Street East and Park Street, and Victoria Street and King Street). These stop signs are not located in places one would expect an all-way stop and lack most of the "all-way" tabs to inform drivers that it is an all-way stop. As such it is recommended that these tabs are replaced as soon reasonably.

## 5.0 Rural Posted Speed Limits

The Township is defined as a local municipality under the Ontario Highway Traffic Act (HTA). Under the HTA any roadway within the Municipality, without a signed speed limit, is governed by the statutory speed limits set out in Part IX of the Act.

As per the latest revision of the HTA, a statutory speed limit of 50 km/h generally applies within the built-up areas of the Township, and 80 km/h elsewhere. Statutory speed limits are, in effect, “default” speed limits. They apply universally under a given set of circumstances, and do not require the presence of signs to be enforceable. Accordingly, speed limit signs are not required to impose an 80 km/h speed limit on the Township’s rural roads, but they are required for any other speed limit.

Township staff asked Wills to advise them on the implications of lowering the speed limit to 60 km/h for the entire municipality.

Speed limits are a necessary component in achieving both mobility and road safety objectives. Appropriate speed limits serve to minimize the difference in speeds between vehicles in the traffic stream. On two-lane rural roads, this minimizes queuing behind slower traffic, following too closely, and the perceived need for potentially-risky overtaking. For traffic entering from driveways and crossing roadways, speed consistency amongst conflicting vehicles makes the task of choosing acceptable gaps in traffic easier. In this manner, appropriate speed limits serve to reduce the likelihood of collisions occurring.

That said, crash severity, when collisions do occur, is generally a function of speed and the resultant collision forces, particularly when a vulnerable road user is involved.

Speed limits are set to inform motorists of appropriate driving speeds under favorable conditions. Drivers are expected to reduce speeds under certain conditions (i.e., poor visibility, adverse weather, congestion, warning signs, or presence of bicyclists and pedestrians). Legislation and statutes generally reflect this requirement. All speed control regulations provide the legal basis for adjudication and sanctions for violations of the law. Municipalities may also post advisory speed signs, which do not have the force of law but warn motorists of suggested safe speeds for specific conditions at particular locations (i.e. a sharp curve or intersection approach).

The primary purpose of the speed limit is to advise drivers of the maximum reasonable and safe operating speed under favorable conditions. It provides a basis for enforcement and ought to be fair in the context of traffic law.

Methodologies for setting speed limits are designed to result in recommended speed limits that:

- Are related to crash risk;
- Provide a reasonable basis for enforcement;

- Are fair in the context of traffic law; and
- Are accepted as reasonable by a majority of road users.

Methodologies are generally applicable on all road types and capable of being implemented with existing resources.

### **Setting Speed Limits, The Engineering Approach – Road Risk Method**

One of the methods of setting speed limits using an engineering approach is the Road Risk Method in which the speed limit is determined by the risk associated with the physical design of the road and the expected traffic conditions. The basis of this methodology is to set the speed limit according to the function or classification of the road (which also tends to dictate the design of the road), and then to adjust the speed limit based on the relative risk introduced by various road and roadside design features

### **The Canadian Guidelines for Establishing Posted Speed Limits**

The Canadian Guidelines for Establishing Posted Speed Limits was developed by the Transportation Association of Canada (TAC Guidelines) and were developed to provide guidance and to enhance consistency in the evaluation of posted speed limits. The guidelines were developed through the review of current domestic and international practices, technical documentation and testing.

The TAC Guidelines are based on the road risk method which is primarily based on the evaluation of risk associated with the physical characteristics of a roadway. The specific road classes considered are freeways, expressways, arterials, collectors and locals. These road classes are consistent with the Geometric Design Guide for Canadian Roads.

The fundamental concept of the evaluation methodology is to identify the ideal speed according to the nature of land use (urban/rural), laning, median separation and road classification.

For municipal arterial, collector and local roads, the ideal speed is determined based on the typical functions of these roads and typical public expectations under minimal risk conditions. Then, a systematic evaluation of risk related to geometry and traffic criteria is carried out. A recommended posted speed limit is then established according to the level of risk. The higher the level of risk associated with the roadway's physical characteristics, the lower the resulting posted speed limit.

It is important to note that the development of speed limits for any one road should be determined with consideration for the specific characteristics of the road. Therefore, an overall "blanket" application of speed limit may not be appropriate for a selection of roads with varying characteristics.

A detailed assessment of road characteristics for the purpose of revising speed limits is not included within the context of the current Road Needs Study and sign review. However, as part of the 2015 Road Needs Study, comfort speeds were recorded for each road section which may be considered as the accepted reasonable speed for each road by a majority of the road users. While a more thorough site specific process is available for considering appropriate posted speeds for any section of road, the comfortable operating speed is often a good baseline for establishing the tendency of most vehicles travelling the road giving consideration to the road alignments, environment and condition. A vast discrepancy between the comfort speed and the speed limit can indicate locations where consideration of a revised speed limit is appropriate.

With respect to the Township of Havelock, Belmont, Methuen, there are currently 91 km of road (of the total 159 km network) with a default speed limit of 80 km/h, as per the HTA.

Of the 91 km of unposted roads, 14 km have comfort speeds above 60 km/h, and 33 km have comfort speeds at 60 km/h. The remaining 45 km of road have comfort speeds below 60 km/h.

Revising the speed limit to 60 km/h across the currently unposted roads will mean that the comfort speeds of approximately 36% of roads (33 km of the 91 km) will approximately match their legal speed limit.

There are several challenges to an “across the board” application of a revised speed limit such as:

- Enforcement of speed limits on low volume, rural roads can be difficult and may lead to motorists disobeying the posted speeds,
- Some motorists will tend to travel at the comfort speed for a road, regardless of posted speed. This can introduce a variability of speeds within a road section and is typically less desirable than one consistent speed. Motorists accessing the road have a more difficult time judging speeds of oncoming traffic.
- A reduction of posted speed (to 60 km/h) on roads which are otherwise appropriately travelled safely at higher speeds (80km/h) would not be accepted as reasonable by a majority of road users.
- After reducing a speed limit, it may prove difficult to revert to an 80 km/h speed limit, should there be a reason to do so.

As an alternative to legal speed limits, the Township may consider posted advisory speeds to alert drivers to situations where roads may not be travelled safely at the default 80 km/h speed limit.

## 6.0 Summary

D.M. Wills Associates (Wills) inventoried and reviewed of the Township of Havelock-Belmont-Methuen's existing signage. Wills assessed sign condition and has prepared recommendations on where to add, alter or remove signage to better direct motorists.

52 new signs are recommended, 13 signs are recommended for removal for either being redundant or misleading, 185 signs are recommended for like-for-like replacement, and 17 signs have miscellaneous recommendations.

Additionally, the intersection control at several intersections was reviewed to ensure conformance with the OTM and GDSM.

It is recommended that the existing yield and stop controlled intersection at 6<sup>th</sup> Line, Preston Road, and Burnt Dam Road is converted into a single stop controlled intersection. The yield controlled intersection at Baker Road and North School Road meets the minimum requirements for a yield controlled intersection.

Four (4) uncontrolled intersections (at North School Road and 10<sup>th</sup> Concession, Church Road and 10<sup>th</sup> Concession, Holdcroft Road and West Kosh Road, and Post Road and East Post Road) do not have the sightlines required for an uncontrolled or yield controlled intersection and are therefore recommended to be converted to stop controlled intersections.

Several all-way stop controlled intersections (William Street and Mathison Street East, Mathison Street East and Park Street, and King Street East and Victoria Street) have traffic estimates much lower than the threshold usually considered for an all-way stop. Consideration should be given to converting these intersections to simple stop conditions provided there is no history of collisions.

The implication of lowering the speed limit of the Township's rural roads to 60 km/h was briefly explored. Speed limits are typically determined based on specific characteristics of the road or group of roads as opposed to an "across the board" application of posted speed. Consideration may be given to posting advisory speed signs on select roads, as appropriate.

We trust the above and attached information will be of benefit to the Township and appreciate the opportunity to assist the Township in developing its road and sign improvement plan.

Respectfully submitted,

---

Eric St. Pierre  
Transportation Technician

---

Michael Lang, P. Eng.  
Manager, Transportation Engineering

## Statement of Limitations

This report has been prepared by D.M. Wills Associates on behalf of the Township of Havelock-Belmont-Methuen. The conclusions and recommendations in this report are based on available background documentation and discussions with applicable Township staff at the time of preparation.

The report is intended to document the 2015 Sign Inventory and Review findings and assist the Township in developing budgetary plans for investment into their road network.

Any use which a third party makes of this report, other than as a Sign Inventory and Review is the responsibility of such third parties. D.M. Wills Associates Limited accepts no responsibility for damages, if any, suffered by a third party as a result of decisions made or action taken based on using this report for purposes other than as a summary of the 2015 Sign Inventory and Review findings.

## **Appendix A**

---

### **Road Signs Summary**



Sign Number	Road(s)	Jurisdiction (Assumed)	Location (Latitude and Longitude)	Offset from E <sub>t</sub>	Size (mm x mm)	Condition	Description	Replacement Code (MTO)	Location	Comments	Picture ID
001	Elm Street, Ottawa Street West	HBM	N44.43326 W77.88944	2.8	750 x 750	G	Stop Sign	Ra-101	NE Corner		0770
002	Elm Street, Ottawa Street West	HBM	N44.43326 W77.88944	2.9		G	Street Sign - Elm Street		NE Corner		0771
003	Elm Street, Ottawa Street West	HBM	N44.43326 W77.88944	2.9		G	Street Sign - Ottawa Street		NE Corner		0772
004	Elm Street, Ontario Street	HBM	N44.43374 W77.88949	4.9		G	Street Sign - Ontario Street		NE Corner		0773
005	Elm Street, Ontario Street	HBM	N44.43374 W77.88949	4.9		G	Street Sign - Elm Street		NE Corner		0774
006	Elm Street, Ontario Street	HBM	N44.43369 W77.88936	2.4	600 x 600	G	Stop Sign	Ra-1	NE Corner		0775
007	Ann Street, Ontario Street	HBM	N44.43382 W77.89044	2.0	600 x 600	G	Stop Sign	Ra-1	NW Corner		0778
008	Ann Street, Ontario Street	HBM	N44.43370 W77.89044	2.3		G	Street Sign - Ann Street		NW Corner		0779
009	Ann Street, Ontario Street	HBM	N44.43370 W77.89044	2.3		G	Street Sign - Ontario Street		NW Corner		0780
010	Ann Street, Alexander Street	HBM	N44.43469 W77.89038	-1.0	600 x 600	G	Stop Sign	Ra-1	SE Corner		0783
011	Ann Street, Alexander Street	HBM	N44.43479 W77.89038	2.5		G	Street Sign - Alexander Street		SE Corner		0786
012	Ann Street, Alexander Street	HBM	N44.43551 W77.89042	1.2	600 x 600	G	Stop Sign	Ra-1	NW Corner		0787
013	Ann Street, Alexander Street	HBM	N44.43553 W77.89034	1.0	600 x 600	G	Stop Sign	Ra-1	SE Corner		0790
014	Ann Street, Alexander Street	HBM	N44.43553 W77.89037	1.5		G	Street Sign - Ann Street		SE Corner		0791
015	Ann Street, Alexander Street	HBM	N44.43553 W77.89037	1.5		G	Street Sign - Donald Street		SE Corner		0792
016	Donald Street, Concession Street	County of Peterborough	N44.43543 W77.89337	4.0		G	Street Sign - Concession Street		SE Corner		0797
017	Donald Street, Concession Street	County of Peterborough	N44.43543 W77.89337	4.0		G	Street Sign - Donald Street		SE Corner		0798
018	Donald Street, Concession Street	County of Peterborough	N44.43554 W77.89336	3.5	600 x 600	G	Stop Sign	Ra-1	NE Corner		0799
019	McLean Avenue, Union Street	HBM	N44.43646 W77.88888	3.0		G	Street Sign - McLean Avenue		SE Corner		0801
020	McLean Avenue, Union Street	HBM	N44.43646 W77.88888	3.0		G	Street Sign - Union Street		SE Corner		0802
021	McLean Avenue, Concession Street	HBM	N44.43646 W77.89378	3.7	600 x 600	G	Stop Sign	Ra-1	NE Corner		0810
022	McLean Avenue, Concession Street	HBM	N44.43646 W77.89379	3.5		G	Street Sign - Concession Street		NE Corner		0811
023	McLean Avenue, Concession Street	HBM	N44.43646 W77.89379	3.5		G	Street Sign - McLean Avenue		NE Corner		0812
024	McLean Avenue, Union Street	HBM	N44.43658 W77.88885	5.0		G	Street Sign - Newton Street		NW Corner		0813
025	Union Street, King Street West	HBM	N44.43605 W77.88862	3.7	600 x 600	G	Stop Sign	Ra-1	NE Corner		0814
026	Union Street, King Street West	HBM	N44.43605 W77.88861	3.5		G	Street Sign - King Street West		NE Corner		0815
027	Union Street, King Street West	HBM	N44.43605 W77.88861	3.5		G	Street Sign - Union Street		NE Corner		0816
028	Union Street, King Street West	HBM	N44.43585 W77.88865	2.5	450 x 300	G	Handicap Parking	Rb-93	East Side		0817
029	Union Street, Donald Street	HBM	N44.43573 W77.88877	4.8		G	Street Sign - Union Street		NW Corner		0818
030	Union Street, Donald Street	HBM	N44.43573 W77.88877	4.8		G	Street Sign - Donald Street		NW Corner		0819
031	Union Street, Donald Street	HBM	N44.43558 W77.88877	2.7	750 x 750	G	Stop Sign	Ra-101	SW Corner		0820
032	Union Street, Mathison Street West	HBM	N44.43519 W77.88858	2.3	750 x 750	G	Stop Sign	Ra-101	NE Corner		0821
033	Union Street, Mathison Street West	HBM	N44.43518 W77.88859	2.0		G	Street Sign - Union Street		NE Corner		0822
034	Union Street, Mathison Street West	HBM	N44.43518 W77.88860	2.0		G	Street Sign - Concession Street		NE Corner		0823
035	Union Street, Alexander Street	HBM	N44.43474 W77.88849	3.0		G	Street Sign - Alexander Street		East Side		0828
036	Union Street, Alexander Street	HBM	N44.43474 W77.88849	3.0		G	Street Sign - Union Street		East Side		0829
037	Union Street, Alexander Street	HBM	N44.43472 W77.88865	1.0	750 x 750	G	Stop Sign	Ra-101	SW Corner		0830
038	Union Street, Ontario Street	HBM	N44.43376 W77.88854	2.0		G	Street Sign - Ontario Street		NW Corner		0833
039	Union Street, Ontario Street	HBM	N44.43376 W77.88854	2.0		G	Street Sign - Union Street		NW Corner		0834
040	Union Street, Ontario Street	HBM	N44.43379 W77.88855	2.0	750 x 750	G	Stop Sign	Ra-101	NW Corner		0832
041	Baker Road, County Road 46	County of Peterborough	N44.44054 W77.89602	2.5		G	Street Sign - Baker Road	G216	SW Corner		0835
042	Baker Road, County Road 46	County of Peterborough	N44.44051 W77.89616	2.5	600 x 600	G	Stop Sign	Ra-1	South Side		0836
043	Baker Road	HBM	N44.44037 W77.89691	2.0	900 x 600	F	Maximum Speed 60 km/h	Rb-1A	North Side		0837
044	Baker Road	HBM	N44.44037 W77.89691	2.0	600 x 600	G	Playground Ahead	Wc-3	North Side		0838
045	Baker Road, North School Road	HBM	N44.44004 W77.92252	1.5	900 x 600	P	Maximum Speed 60 km/h	Rb-1A	South Side		0839
046	Baker Road, North School Road	HBM	N44.44015 W77.92248	2.6	600 x 600	G	Yield Sign	Ra-2	North Side		0840
047	Baker Road, North School Road	HBM	N44.44015 W77.92248	2.6	220 x 450	G	tab: Yield	Ra-2t	North Side		0840
048	Baker Road	HBM	N44.44237 W77.91401	5.5	600 x 600	P	Checkerboard -->	Wa-8R	North Side		0843

Sign Number	Road(s)	Jurisdiction (Assumed)	Location (Latitude and Longitude)	Offset from E.P.	Size (mm x mm)	Condition	Description	Replacement Code (MTO)	Location	Comments	Picture ID
049	Baker Road	HBM	N44.44232 W77.91384	5.5	900 x 900	P	Checkerboard <--	Wa-8L	North Side		0844
050	Baker Road	HBM	N44.44229 W77.91378	8.5	900 x 600	F	"Notice - By-Law #1999-22...." No Dumping	Custom Sign - HBM By-l	North Side		0847
051	Baker Road	HBM	N44.43809 W77.91188	2.5	600 x 600	P	Turn Sign <--	Wa-1L	South Side		0848
052	Baker Road	HBM	N44.43806 W77.91173	2.5	900 x 600	P	Maximum Speed 60 km/h	Rb-1A	North Side		0849
053	Baker Road	HBM		3.0	900 x 600	P	Maximum Speed 60 km/h	Rb-1A	South Side		0850
054	Baker Road	HBM	N44.43752 W77.90978	1.5	900 x 900	P	Turn Sign -->	Wa-1R	North Side		0852
055	Baker Road	HBM	N44.43882 W77.90397	2.8	900 x 900	P	Railway Crossing Ahead	Wc-4	South Side	Poorly visible from roadway - consider moving or clearing sight line	0853
056	Baker Road	HBM	N44.43882 W77.90397	2.8	450 x 750	F	tab: Restricted Visibility		South Side	Poorly visible from roadway - consider moving or clearing sight line	0854
057	Baker Road	HBM	N44.43886 W77.90330	1.8	900 x 900	F	Be Prepared to Stop		South side		0855
058	Baker Road	HBM	N44.43903 W77.90266	3.5	900 x 900	F	Stop Before Crossing		South Side		0858
059	Baker Road	HBM	N44.43914 W77.90260	3.0	900 x 900	F	Stop Before Crossing		North Side		0859
060	Baker Road	HBM	N44.43929 W77.90193	3.0	900 x 900	F	Be Prepared to Stop		North Side		0860
061	Baker Road	HBM	N44.43945 W77.90118	3.2	900 x 900	F	Railway Crossing Ahead	Wc-4	North Side		0861
062	Baker Road	HBM	N44.43945 W77.90118	3.2	450 x 750	F	tab: Restricted Visibility		North Side		0861
063	North School Road.	HBM	N44.43134 W77.93326	3.5	200 x 1200	F	Township Boundary Sign - "Belmont TWP."		North Side		0863
064	North School Road, 11th Line	HBM	N44.43257 W77.92881	4.5	900 x 900	P	Checkerboard <-->	Wa-8LR	North Side		0864
065	North School Road, 11th Line	HBM	N44.43258 W77.92873	2.5	200 x 1200	G	Street Sign - North School Road	G216	SE Corner		0866
066	North School Road, 11th Line	HBM	N44.43258 W77.92873	2.5	200 x 1200	G	Street Sign - Belmont TWP 11th Line	G216	SE Corner		0867
067	North School Road, Baker Road	HBM	N44.43969 W77.92314	2.5	900 x 900	F	Checkerboard <-->	Wa-8LR	North Side		0869
068	North School Road, Baker Road	HBM	N44.43994 W77.92306	3.0	200 x 900	F	Street Sign - Baker Road	G216	NW Corner	Straighten post	0870
069	North School Road, Baker Road	HBM	N44.43994 W77.92306	3.0	200 x 900	F	Street Sign - North School Road	G216	NW Corner	Straighten post	0871
070	North School Road, Concession Road 10	HBM	N44.45406 W77.91985	3.0	900 x 900	F	Checkerboard <-->	Wa-8LR	West Side		0872
071	North School Road, Concession Road 10	HBM	N44.45417 W77.91960	2.8	200 x 900	F	Street Sign - North School Road	G216	SE Corner	Straighten post	0873
072	North School Road, Concession Road 10	HBM	N44.45417 W77.91960	2.8	250 x 900	P	Street Sign - Belmont TWP CON 10	G216	SE Corner		0874
073	North School Road	HBM	N44.45822 W77.91216	5.0	900 x 900	G	Railway Crossing Ahead	Wc-4	South Side		0876
074	North School Road	HBM	N44.45822 W77.91216	5.0	450 x 750	G	tab: Restricted Visibility		South Side		0876
075	North School Road	HBM	N44.45867 W77.91186	5.0	900 x 900	G	Be Prepared to Stop		South Side		0877
076	North School Road	HBM	N44.45910 W77.91144	5.0	900 x 900	G	Stop Before Crossing		South Side		0878
077	North School Road	HBM	N44.45930 W77.91141	5.0	900 x 900	F	Stop Before Crossing		North Side		0879
078	North School Road	HBM	N44.45974 W77.91103	5.0	900 x 900	G	Be Prepared to Stop		North Side		0880
079	North School Road	HBM	N44.46008 W77.91071	4.8	900 x 900	P	Railway Crossing Ahead	Wc-4	North Side		0881
080	North School Road	HBM	N44.46008 W77.91071	4.8	900 x 900	P	tab: Restricted Visibility		North Side		0881
081	North School Road, County Road 46	County of Peterborough	N44.46557 W77.90814	3.1	600 x 600	G	Stop Sign	Ra-1	SW Corner		0884
082	North School Road, County Road 46	County of Peterborough	N44.46576 W77.90813	6.8	200 x 1200	F	Street Sign - North School Road	G216	SW Corner		
083	North School Road	HBM	N44.45711 W77.91366					Wc-4	South Side		0886
084	North School Road	HBM	N44.45711 W77.91366					Wc-4	North Side		0886
085	Church Road, County Road 46	County of Peterborough	N44.48226 W77.89486	3.3	200 x 1000	F	Street Sign - Church Road	G216	NW Corner		0887
086	Church Road, County Road 46	County of Peterborough	N44.48214 W77.89480	1.8	600 x 600	G	Stop Sign	Ra-1	SW Corner	Straighten post	0888
087	Church Road	HBM	N44.48142 W77.89817	1.0	600 x 600	P	Hidden Driveway		North Side		0889
088	Church Road	HBM	N44.47911 W77.90794	1.5	600 x 600	P	Hidden Driveway		North Side		0891
089	Church Road, County Road 44	County of Peterborough	N44.47779 W77.91390	2.5	600 x 600	G	Stop Sign	Ra-1	NE Corner		0894
090	Church Road, County Road 44	County of Peterborough	N44.47764 W77.91403	3.5	200 x 1000	F	Street Sign - County Road 44	G216	NE Corner		0895
091	Church Road, County Road 44	County of Peterborough	N44.47764 W77.91403	3.5	200 x 800	F	Street Sign - Church Road	G216	NE Corner		0896
092	Church Road, County Road 44	County of Peterborough	N44.47764 W77.91403	1.7	600 x 600	G	Stop Sign	Ra-1	SW Corner		0897
093	Church Road	HBM	N44.47768 W77.91435	2.0	900 x 900	P	Railway Crossing Ahead	Wc-4	North Side		0898
094	Church Road	HBM	N44.47708 W77.91648	2.0	900 x 900	P	Railway Crossing Ahead	Wc-4	South Side		0901

Sign Number	Road(s)	Jurisdiction (Assumed)	Location (Latitude and Longitude)	Offset from E <sub>t</sub>	Size (mm x mm)	Condition	Description	Replacement Code (MTO)	Location	Comments	Picture ID
095	Church Road	HBM	N44.47708 W77.91648	2.0	900 x 900	P	tab: Poor Visibility		South Side		0901
096	Church Road	HBM	N44.47423 W77.92894	NEW			Stop Sign	Ra-1	NE Corner		
097	Church Road, Concession Road 10	HBM	N44.47408 W77.92928	3.0	600 x 600	P	Checkerboard <->	Wa-8LR	West Side		0903
098	Church Road, Concession Road 10	HBM	N44.47409 W77.92930	3.0	200 x 800	G	Street Sign - Church Road	G216	West Side		0904
099	Church Road, Concession Road 10	HBM	N44.47409 W77.92930	3.0	200 x 100	G	Street Sign - Belmont TWP CON 10	G216	West Side		0905
100	Concession 10	HBM	N44.47444 W77.92935	1.8	450 x 450	P	No Exit	Wa-31	East Side		0907
101	Concession 10	HBM	N44.49029 W77.93709	0.0	900 x 900	P	Checkerboard	Wa-8	End		0908
102	Concession 10	HBM	N44.49030 W77.93707	0.0	900 x 600	P	"Unassumed Road Use at Your Own Risk"		End		0909
103	Concession 10	HBM	N44.46774 W77.92603	NEW			Winding Road	Wa-6R	South Side		
104	Concession 10	HBM	N44.45785 W77.92128	NEW			tab: For 2 km	Wa-6t	South Side		
105	Concession 10	HBM	N44.45962 W77.92055	NEW			Winding Road	Wa-6R	North Side		
106	Concession 10	HBM	N44.46049 W77.92097	NEW			tab: For 2 km	Wa-6t	North Side		
107	Concession 10	HBM	N44.45442 W77.91969	NEW			Stop Sign	Ra-1	NW Corner		
108	Menzies	HBM	N44.45118 W77.90073	1.0	450 x 450	G	No Exit	Wa-31	South Side		0912
109	Menzies, County Road 46	County of Peterborough	N44.45126 W77.90082	1.0	600 x 600	G	Stop Sign	Ra-1	NE Corner		0913
110	Menzies, County Road 46	County of Peterborough	N44.45113 W77.90085	3.5	250 x 600	G	Street Sign - Menzies Road	G216	NE Corner		0914
111	Menzies	HBM	N44.45204 W77.89720	NEW			Checkerboard	Wa-8	End		
112	Keating Road, County Road 46	County of Peterborough	N44.48767 W77.89747	2.5	250 x 800	G	Street Sign - Keating Road	G216	NW Corner		0915
113	Keating Road, County Road 46	County of Peterborough	N44.48759 W77.89734	3.0	600 x 600	G	Stop Sign	Ra-1	SW Corner		0916
114	Keating Road, County Road 46	County of Peterborough		2.5	250 x 800	G	Street Sign - Keating Road	G216	NW Corner		
115	Keating Road, County Road 46	County of Peterborough		3.0	600 x 600	G	Stop Sign	Ra-1	SW Corner		
116	Anderson Road, County Road 46	County of Peterborough	N44.52909 W77.88870	3.5	250 x 1000	G	Street Sign - Anderson Road	G216	SW Corner		0918
117	Anderson Road, County Road 46	County of Peterborough	N44.52876 W77.88854	2.0	600 x 600	G	Stop Sign	Ra-1	SE Corner		0919
118	Anderson Road	HBM	N44.52876 W77.88853	2.0	450 x 450	G	No Exit	Wa-31	West Side		0921
119	Anderson Road	HBM	N44.52862 W77.88845	2.5	900 x 900	F	Maximum Speed 60 km/h	Rb-2	West Side		0922
120	Anderson Road	HBM	N44.52796 W77.88806	3.0	450 x 450	F	Neighborhood Watch Community	G512	West Side		0923
121	Anderson Road	HBM	N44.52753 W77.88787	3.0	600 x 600	G	Deer Crossing	Wc-11	West Side		0924
122	Anderson Road	HBM	N44.52753 W77.88787	3.0	300 x 600	G	tab: For 3km	Wa-6t	West Side		0924
123	Anderson Road	HBM	N44.51642 W77.88214	3.0	900 x 900	F	Maximum Speed 60 km/h	Rb-1A	West Side		0925
124	Anderson Road	HBM	N44.50561 W77.87670	3.0	900 x 900	F	Maximum Speed 60 km/h	Rb-1A	East Side	Straighten post	0926
125	Anderson Road	HBM	N44.50561 W77.87669	0.0	1200 x 1200	G	Checkerboard	Wa-108	End		0927
126	Anderson Road	HBM	N44.50573 W77.87672	1.5	750 x 450	P	Neighborhood Watch Community	G512	East Side		0928
127	Anderson Road	HBM	N44.50699 W77.87734	2.5	900 x 900	G	Maximum Speed 60 km/h	Rb-1A	East Side		0932
128	Anderson Road	HBM	N44.50812 W77.87777	2.5	600 x 600	G	Deer Crossing	Wc-11	East Side		0933
129	Anderson Road	HBM	N44.50812 W77.87777	2.5	300 x 600	G	tab: For 3km	Wa-6t	East Side		0933
130	Vansickle Trail, County Road 46	County of Peterborough	N44.59904 W77.88640	3.7	200 x 800	G	Street Sign - Vansickle Trail	G216	SE Corner		0934
131	Vansickle Trail, County Road 46	County of Peterborough	N44.59912 W77.88646	1.8	600 x 600	G	Stop Sign	Ra-1	NE Corner		0935
132	Vansickle Trail	HBM	N44.59915 W77.88608	1.5	450 x 450	P	No Exit	Wc-31	South Side		0937
133	Vansickle Trail	HBM	N44.60086 W77.87975	NEW			Checkerboard	Wa-8	End		
134	Vansickle Trail	HBM	N44.60086 W77.87991	8.0	900 x 600	G	HBM Turnaround Sign		End		0938
135	Post Road	HBM	N44.60923 W77.89442	0.0	900 x 600	G	HBM Turnaround Sign		End		0939
136	Post Road	HBM	N44.60987 W77.89199	3.5	900 x 900	F	Checkerboard ->	Wa-8R	North Side		0946
137	Post Road	HBM	N44.60982 W77.89193	3.5	900 x 900	F	Checkerboard <-	Wa-8L	North Side		0947
138	Post Road, East Post Road	HBM	N44.60910 W77.89145	7.5	200 x 800	G	Street Sign - East Post Road	G216	NE Corner		0948
139	Post Road, East Post Road	HBM	N44.60910 W77.89145	7.5	200 x 600	G	Street Sign - Post Road	G216	NE Corner		0949
140	Post Road, East Post Road	HBM		NEW			Stop Sign	Ra-1	NE Corner	Intersection is uncontrolled	0949
141	Post Road, East Post Road	HBM	N44.60910 W77.89160	3.5	900 x 900	G	Checkerboard <->	Wa-8L	West Side		0950
142	East Post Road, County Road 46	County of Peterborough	N44.60993 W77.88856	1.5	600 x 600	G	Stop Sign	Ra-1	SW Corner		0951

Sign Number	Road(s)	Jurisdiction (Assumed)	Location (Latitude and Longitude)	Offset from E <sub>t</sub>	Size (mm x mm)	Condition	Description	Replacement Code (MTO)	Location	Comments	Picture ID
143	East Post Road, County Road 46	County of Peterborough	N44.60997 W77.88844	1.0	200 x 800	G	Street Sign - East Post Road	G216	NW Corner		0952
144	East Post Road, Post Road	HBM	N44.60731 W77.89055	1.8	600 x 600	G	Stop Sign	Ra-1	NE Corner		0954
145	East Post Road, Post Road	HBM	N44.60753 W77.89053	9.0	200 x 500	G	Street Sign - Post Road	G216	NE Corner		0955
146	Sandy Lake Road, County Road 46	County of Peterborough	N44.65373 W77.88646	1.5	600 x 600	G	Stop Sign	Ra-1	NE Corner		0956
147	Sandy Lake Road, County Road 46	County of Peterborough	N44.65372 W77.88651	2.0	200 x 800	G	Street Sign - Sandy Lake Road	G216	NE Corner		0957
148	Sandy Lake Road	HBM	N44.65420 W77.88588	2.5	500 x 500	G	"Notice: This is a Seasonal Limited Maintenance Road..."		South Side		0958
149	Sandy Lake Road	HBM		NEW -----			Winding Road	Wa-6L	South Side	Install before first curve from the South JCT with County Road 46	
150	Sandy Lake Road	HBM		NEW -----			tab: For 11 km	Wa-6t	South Side	Install before first curve from the South JCT with County Road 46	
151	Sandy Lake Road, Tangamong Road	HBM	N44.68405 W77.88528	8.5	200 x 800	G	Street Sign - Tangamong Road	G216	Median		0960
152	Sandy Lake Road, Tangamong Road	HBM	N44.68405 W77.88528	8.5		G	Street Sign - Sandy Lake Road	G216	Median		0961
153	Sandy Lake Road, Tangamong Road	HBM	N44.68426 W77.88487	3.5	450 x 450	P	No Exit	Wa-31	North Side	Tied to a tree	0964
154	Sandy Lake Road, Tangamong Road	HBM	N44.68426 W77.88488	4.5	450 x 450	P	No Exit	Wa-31	South Side	Tied to a tree	0965
155	Sandy Lake Road	HBM		NEW -----			Winding Road	Wa-6L	West Side	Install South of intersection with Tangamong	
156	Sandy Lake Road	HBM		NEW -----			tab: For 3 km	Wa-6t	West Side	Install South of intersection with Tangamong	
157	Sandy Lake Road	HBM		NEW -----			Winding Road	Wa-6L	East Side	Install North of intersection with Tangamong	
158	Sandy Lake Road	HBM		NEW -----			tab: For 7 km	Wa-6t	East Side	Install North of intersection with Tangamong	
159	Sandy Lake Road, County Road 46	County of Peterborough	N44.71806 W77.93175	1.5	600 x 600	G	Stop Sign	Ra-1	NE Corner		0974
160	Sandy Lake Road, County Road 46	County of Peterborough	N44.71793 W77.93170	2.5		G	Street Sign - Sandy Lake Road	G216	SE Corner		0975
161	Sandy Lake Road	HBM		NEW -----			Winding Road	Wa-6R	West Side	Install before first curve from the North JCT with County Road 46	
162	Sandy Lake Road	HBM		NEW -----			tab: For 11 km	Wa-6t	West Side	Install before first curve from the North JCT with County Road 46	
163	Sandy Lake Road	HBM	N44.71793 W77.93122	2.5	450 x 600	G	"Notice: This is a Seasonal Limited Maintenance Road..."		South Side		0976
164	Clare Newham Road, County Road 46	County of Peterborough	N44.73286 W77.93743	3.0		G	Street Sign - Clare Newham Road	G216	NE Corner		0977
165	Clare Newham Road, County Road 46	County of Peterborough	N44.73293 W77.93736	0.5	600 x 600	F	Stop Sign	Ra-1	SE Corner		0978
166	Clare Newham Road	HBM	N44.73292 W77.93720	1.5	450 x 450	G	Truck Entrance	Wc-8R	South Side	Does not look like there is an active truck entrance here... Remove	0979
167	Clare Newham Road	HBM	N44.73293 W77.93704	5.0	600 x 600	P	"Notice: This is a Seasonal Limited Maintenance Road..."		South Side		0980
168	Unimin Road, County Road 46	County of Peterborough	N44.67657 W77.92786	5.5		G	Street Sign - Unimin Road	G216	NW Corner		0983
169	Unimin Road, County Road 46	County of Peterborough	N44.67648 W77.92770	1.5	600 x 600	G	Stop Sign	Ra-1	SW Corner		0984
170	Unimin Road	HBM	N44.67634 W77.92813	2.0	450 x 450	F	"Notice - By-Law #1999-22...." No Dumping		South Side		0985
171	Unimin Road	HBM	N44.67633 W77.92873	4.0	450 x 450	F	"Notice - By-Law #1999-22...." No Dumping		North Side		0986
172	Unimin Road	HBM	N44.67436 W77.93878	2.5	450 x 450	F	"Notice - By-Law #1999-22...." No Dumping		South Side		0988
173	North Shore Road, County Road 46	County of Peterborough	N44.67493 W77.92012	3.0		F	Street Sign - North Shore Road	G216	NW Corner		0991
174	North Shore Road, County Road 46	County of Peterborough	N44.67496 W77.92003	1.0	600 x 600	G	Stop Sign	Ra-1	SW Corner		0992
175	North Shore Road	HBM		NEW -----			Winding Road	Wa-6R	North Side	Install just west of intersection with County Road 46	
176	North Shore Road	HBM		NEW -----			tab: For 2 km	Wa-6t	North Side	Install just west of intersection with County Road 46	
177	North Shore Road	HBM	N44.66696 W77.92886	1.0	600 x 250	G	Hazard Sign	Wa-33R	North Side	Tied to a tree	0993
178	North Shore Road	HBM	N44.66688 W77.92995	NEW -----			Hazard Sign	Wa-33L	South Side	SBGR ends should have a hazard sign	
179	North Shore Road	HBM	N44.66688 W77.92995	NEW -----			Hazard Sign	Wa-33R	North Side	SBGR ends should have a hazard sign	
180	Penninsula Road, North Shore Road	HBM	N44.66879 W77.92613	1.5		F	Street Sign - Peninsula Road	G216	SW Corner		0997
181	Penninsula Road, North Shore Road	HBM	N44.66879 W77.92613	1.5		F	Street Sign - North Shore Road	G216	SW Corner		0997
182	Penninsula Road, North Shore Road	HBM	N44.66890 W77.92615	2.0	900 x 900	G	Checkerboard <->	Wa-8LR	North Side		0998
183	Penninsula Road, North Shore Road	HBM	N44.66882 W77.92600	1.5	600 x 600	G	Stop Sign	Ra-1	SE Corner		0999
184	Penninsula Road	HBM		NEW -----			Winding Road	Wa-6R	West Side		
185	Penninsula Road	HBM		NEW -----			tab: For 4 km	Wa-6t	West Side		

Sign Number	Road(s)	Jurisdiction (Assumed)	Location (Latitude and Longitude)	Offset from E <sub>t</sub>	Size (mm x mm)	Condition	Description	Replacement Code (MTO)	Location	Comments	Picture ID
186	Penninsula Road	HBM	N44.65437 W77.92960	4.5	900 x 600	P	Public Boat Launch	M717	North Side		121-1002
187	Penninsula Road	HBM	N44.65439 W77.92951	12.0	600 x 900	G	"Notice - By-Law #1999-22...." No Dumping		South Side		1003
188	Penninsula Road	HBM	N44.64656 W77.94392	0.0	900 x 600	G	HBM Turnaround Sign		North Side		1004
189	Devils 4 Mile Road	HBM	N44.58687 W77.88036	3.5		G	Street Sign - Devils 4 Mile Road	G216	SE Corner		1009
190	Devils 4 Mile Road	HBM	N44.58699 W77.88042	2.0	600 x 600	G	Stop Sign	Ra-1	NE Corner		1010
191	Devils 4 Mile Road	HBM	N44.58704 W77.88013	1.5	450 x 600	G	"Notice: This is a Seasonal Limited Maintenance Road..."		South Side		1011
192	Devils 4 Mile Road	HBM	N44.58993 W77.87004	0.0	300 x 900	F	Hazard Sign	Wa-33L	South Side		1012
193	Devils 4 Mile Road	HBM	N44.58992 W77.87008	0.0	300 x 900	F	Hazard Sign	Wa-33R	South Side		1012
194	Devils 4 Mile Road	HBM	N44.58995 W77.87006	0.0	300 x 900	F	Hazard Sign	Wa-33L	North Side		
195	Devils 4 Mile Road	HBM	N44.58993 W77.86999	0.0	300 x 900	F	Hazard Sign	Wa-33R	North Side		1014
196	Vansickle Road	HBM	N44.63163 W77.83003	NEW -----			Checkerboard	Wa-8	End		
197	Vansickle Road, Devils 4 Mile Road	HBM	N44.62244 W77.82498	NEW -----			Street Sign - Vansickle Road	G216	East Side		
198	Vansickle Road, Devils 4 Mile Road	HBM	N44.62244 W77.82498	NEW -----			Street Sign - Devils 4 Mile Road	G216	East Side		
199	Vansickle Road	HBM	N44.59409 W77.81404	2.5	900 x 600	G	Maximum Speed 70 km/h	Rb-1A	West Side		1023
200	Vansickle Road	HBM	N44.59347 W77.81426	3.0	600 x 600	G	Sharp Curve Ahead	Wa-2L	West Side	Consider replacing with a winding road sign further north	1024
201	Vansickle Road	HBM	N44.59243 W77.81144	4.5	900 x 900	G	Checkerboard <--	Wa-8L	West Side		1033
202	Vansickle Road	HBM	N44.59245 W77.81144	0.0	300 x 900	G	Hazard Sign	Wa-33R	West Side		1034
203	Vansickle Road	HBM	N44.59245 W77.81144	0.0	300 x 900	G	Hazard Sign	Wa-33L	West Side		x
204	Vansickle Road	HBM	N44.59245 W77.81144	0.0	300 x 900	G	Hazard Sign	Wa-33R	East Side		x
205	Vansickle Road	HBM	N44.59245 W77.81144	0.0	300 x 900	P	Hazard Sign	Wa-33L	East Side		x
206	Vansickle Road	HBM		NEW -----			Winding Road	Wa-6R	West Side	Place just north of FR 59	
207	Vansickle Road	HBM		NEW -----			tab: For 2 km	Wa-6t	West Side	Place just north of FR 59	
208	Vansickle Road	HBM		NEW -----			Winding Road	Wa-6L	East Side	Place just north of FR 54	
209	Vansickle Road	HBM		NEW -----			tab: For 2 km	Wa-6t	East Side	Place just north of FR 54	x
210	Vansickle Road	HBM	N44.58210 W77.80255	1.0	600 x 600	F	Hidden Driveway		East Side		1042
211	Vansickle Road	HBM	N44.57454 W77.79843	1.0	600 x 600	P	Hidden Driveways		West Side		1043
212	Vansickle Road	HBM	N44.54506 W77.78380	1.0	750 x 750	G	Children Playing		West Side		1044
213	Vansickle Road	HBM	N44.54389 W77.78324	1.0	600 x 600	F	Stop Ahead Sign	Wb-1	West Side		1046
214	Vansickle Road	HBM	N44.54282 W77.78304	1.5	600 x 600	P	Hidden Entrance		West Side		1047
215	Vansickle Road, County Road 48	County of Peterborough	N44.54165 W77.78223	0.5	750 x 750	G	Stop Sign	Ra-101	West Side		1048
216	Vansickle Road, County Road 48	County of Peterborough	N44.54155 W77.78224	1.0	200 x 800	G	Street Sign - Cordova Road	Modified G216	NW Corner		1049
217	Vansickle Road, County Road 48	County of Peterborough	N44.54155 W77.78224	1.0	200 x 800	G	Street Sign - Vansickle Road	Modified G216	NW Corner		1049
218	Vansickle Road, County Road 48	County of Peterborough	N44.54156 W77.78200	1.0	1200 x 1200	G	Checkerboard <-->	Wa-108 LR	East Side		1050
219	Concession Road 1, County Road 48	County of Peterborough	N44.53640 W77.80020	0.5	600 x 600	G	Stop Sign	Ra-1	NW Corner		1051
220	Concession Road 1, County Road 48	County of Peterborough	N44.53643 W77.80008	1.0	750 x 750	F	Street Sign - Concession 1 N		NE Corner		1052
221	Concession Road 1, County Road 48	County of Peterborough	N44.53643 W77.80008	1.0	750 x 750	F	Street Sign - County Road 48		NE Corner		1052
222	Concession Road 1	HBM	N44.53655 W77.80017	0.5	450 x 450	P	No Exit	Wa-31	East Side		1053
223	Concession Road 1	HBM	N44.54436 W77.80402	0.5	1200 x 1200	F	Checkerboard	Wa-108	End		1055
224	Preston Road	HBM	N44.49468 W77.85362	1.0	1200 x 1200	G	Yield Ahead	Wb-1a	North Side		1058
225	Preston Road	HBM	N44.49514 W77.85179	1.0	750 x 750	G	Intersection on Sharp Curve Ahead	Modified Wa-102L	North Side		1059
226	Preston Road	HBM	N44.49514 W77.85179	1.0	450 x 450	G	tab: 40 km/h	Wa-7t	North Side		1059
227	Preston Road	HBM	N44.49700 W77.84145	1.0	750 x 750	P	Sharp Curve Ahead	Wa-102L	South Side		1061
228	Preston Road	HBM	N44.49700 W77.84145	1.0	450 x 450	P	tab: 40 km/h	Wa-7t	South Side		1061
229	Preston Road	HBM	N44.49741 W77.83885	1.5	900 x 900	F	Checkerboard -->	Wa-8R	South Side		1062
230	FR 25, Preston Road	HBM	N44.49745 W77.83874	1.0	600 x 600	G	Yield Sign	Ra-2	East Side		1062
231	FR 25, Preston Road	HBM	N44.49745 W77.83874	1.0	450 x 225	P	tab: Yield	Ra-2t	East Side		1063
232	Preston Road	HBM	N44.49752 W77.83880	1.5	900 x 900	G	Checkerboard <-->	Wa-8LR	East Side		1064
233	Preston Road	HBM	N44.49907 W77.83965	1.0	750 x 750	P	Sharp Curve Ahead	Wa-102R	West Side		1066
234	Preston Road	HBM	N44.49907 W77.83965	1.0	450 x 450	P	tab: 40 km/h	Wa-7t	West Side		1066

Sign Number	Road(s)	Jurisdiction (Assumed)	Location (Latitude and Longitude)	Offset from E.P.	Size (mm x mm)	Condition	Description	Replacement Code (MTO)	Location	Comments	Picture ID
235	Preston Road	HBM	N44.50478 W77.83793	1.5	300 x 900	G	Hazard Sign	Wa-33R	East Side		1067
236	Preston Road	HBM	N44.50501 W77.83784	1.5	300 x 900	G	Hazard Sign	Wa-33L	East Side		1068
237	Preston Road	HBM	N44.50505 W77.83793	1.5	300 x 900	G	Hazard Sign	Wa-33R	West Side		1069
238	Preston Road	HBM	N44.50479 W77.83803	1.5	300 x 900	G	Hazard Sign	Wa-33L	West Side		1070
239	Preston Road	HBM	N44.51831 W77.83423	1.0	600 x 600	P	Hidden Driveway		West Side		1071
240	Preston Road	HBM	N44.52004 W77.83324	1.5	600 x 900	P	Maximum Speed 60	Rb-1A	West Side		1072
241	Preston Road	HBM	N44.52004 W77.83324	1.5	600 x 300	P	tab: km/h		West Side		1072
242	Preston Road	HBM	N44.52164 W77.83234	1.0	900 x 900	F	Checkerboard <-	Wa-8L	East Side		1073
243	Preston Road	HBM	N44.52316 W77.83308	3.0	900 x 900	P	Checkerboard <-	Wa-8L	West Side		1074
244	Preston Road	HBM	N44.52318 W77.83307	3.0	900 x 900	F	Checkerboard ->	Wa-8R	West Side		1075
245	Preston Road	HBM	N44.53452 W77.82547	1.0	600 x 600	P	Hidden Driveway		South Side		1076
246	Preston Road	HBM	N44.53487 W77.82301	2.0	1200 x 900	G	Load Limit	Rb-63A	South Side		1077
247	Preston Road	HBM	N44.53485 W77.82300	1.0	600 x 600	G	Single Lane Bridge	Wa-24	South Side		1078
248	Preston Road	HBM	N44.53485 W77.82300	1.0	600 x 450	P	tab: One Lane	Wa-24t	South Side		1078
249	Preston Road	HBM	N44.53491 W77.82148	1.0	300 x 900	G	Hazard Sign	Wa-33R	South Side		1079
250	Preston Road	HBM	N44.53496 W77.82149	1.0	300 x 900	G	Hazard Sign	Wa-33L	South Side		1080
251	Preston Road	HBM	N44.53501 W77.82109	1.0	300 x 900	P	Hazard Sign	Wa-33R	North Side		1081
252	Preston Road	HBM	N44.53501 W77.82104	1.0	300 x 900	G	Hazard Sign	Wa-33L	North Side		1082
253	Preston Road	HBM	N44.53518 W77.82017	2.0	1200 x 1200	G	Load Limit	Rb-63A	North Side		1083
254	Preston Road	HBM	N44.53516 W77.82019	1.0	600 x 600	G	Single Lane Bridge	Wa-24	North Side		1084
255	Preston Road	HBM	N44.53516 W77.82019	1.0	600 x 450	P	tab: One Lane	Wa-24t	North Side		1084
256	Preston Road	HBM	N44.53217 W77.81197	1.0	1200 x 900	G	Load Limit	Rb-63A	North Side		1085
257	Preston Road	HBM	N44.53217 W77.81197	1.0	600 x 300	G	tab: 900 m Ahead		North Side		1085
258	Preston Road, County Road 48	HBM	N44.53205 W77.81194	1.0	600 x 600	G	Stop Sign	Ra-1	SW Corner		1086
259	Preston Road, County Road 48	HBM	N44.53201 W77.81191	1.0	200 x 800	F	Street Sign - County Road 48	G216	SW Corner		1087
260	Preston Road, County Road 48	HBM	N44.53201 W77.81191	1.0	200 x 800	F	Street Sign - Preston Road	G216	SW Corner		1087
261	Bowen Road, County Road 48	HBM	N44.51108 W77.80168	0.5	600 x 600	G	Stop Sign	Ra-1	NE Corner		1088
262	Bowen Road, County Road 48	HBM	N44.51097 W77.80167	0.5	200 x 800	G	Bowen Rd	G216	SE Corner		1089
263	Bowen Road	HBM	N44.51108 W77.80150	0.5	450 x 450	P	No Exit	Wa-31	South Side		1090
264	Bowen Road	HBM	N44.51178 W77.79927	1.0	450 x 600	G	"Notice: This is a Seasonal Limited Maintenance Road..."		South Side		1091
265	Bowen Road	HBM	N44.51191 W77.79899	1.0	600 x 600	F	Steep Incline	Wa-21	South Side		1092
266	Bowen Road	HBM	N44.49078 W77.77241	2.5	900 x 900	F	Checkerboard	Wa-8	End		1094
267	3rd Line, County Road 48	HBM	N44.47343 W77.80271	1.0	600 x 600	G	Stop Sign	Ra-1	SE Corner		1095
268	3rd Line, County Road 48	HBM	N44.47342 W77.80269	1.0	200 x 800	G	3rd Line		SE Corner		1096
269	3rd Line	HBM	N44.47309 W77.80263	2.0	600 x 900	P	Maximum Speed 60	Rb-1A	West Side		1097
270	3rd Line	HBM	N44.47309 W77.80263	2.0	200 x 600	F	tab: km/h		West Side		1097
271	3rd Line	HBM	N44.47300 W77.80263	2.0	900 x 600	G	"Notice - By-Law #1999-22...." No Dumping	Custom Sign - HBM By-Law	West Side		1098
272	3rd Line	HBM	N44.45618 W77.79534	1.0	600 x 600	P	Hidden Driveway		West Side		1100
273	3rd Line	HBM	N44.45210 W77.79300	1.0	600 x 600	P	Stop Ahead Sign	Wb-1	West Side		1101
274	3rd Line	HBM	N44.45046 W77.79198	2.0	600 x 900	G	"Notice - By-Law #1999-22...." No Dumping	Custom Sign - HBM By-Law	East Side		1102
275	3rd Line	HBM	N44.44991 W77.79164	1.0	600 x 750	P	Maximum Speed 60	Rb-1	East Side		1103
276	3rd Line, Highway 7	MTO	N44.44962 W77.79166	0.5	600 x 600	F	Stop Sign	Ra-1	NW Corner		1104
277	3rd Line, Highway 7	MTO	N44.44944 W77.79148	1.0	1200 x 1200	G	Checkerboard <->	Wa-108 LR	South Side		1105
278	7th Concession	HBM	N44.43376 W77.84421	1.0	600 x 750	P	Maximum Speed 60 km/h	Rb-3	West Side		1106
279	7th Concession	HBM	N44.43376 W77.84421	1.0	600 x 750	P	tab: km/h		West Side		1106
280	7th Concession	HBM	N44.43376 W77.84421	1.0	600 x 750	P	tab: Begins		West Side		1106
281	7th Concession, Highway 7	MTO	N44.43390 W77.84410	0.5	750 x 750	G	Stop Sign	Ra-101	SE Corner		1107
282	7th Concession, Highway 7	MTO	N44.43408 W77.84425	1.0	1200 x 1200	G	Checkerboard <->	Wa-108 LR	North Side		1108

Sign Number	Road(s)	Jurisdiction (Assumed)	Location (Latitude and Longitude)	Offset from E <sub>t</sub>	Size (mm x mm)	Condition	Description	Replacement Code (MTO)	Location	Comments	Picture ID
283	7th Concession	HBM	N44.43162 W77.84326	0.5	750 x 750	P	Railway Crossing Ahead	Wc-4	West Side		1109
284	7th Concession	HBM	N44.43162 W77.84326	0.5	300 x 600	P	tab: Poor Visibility		West Side		1109
285	7th Concession	HBM	N44.42949 W77.84222	0.5	750 x 750	P	Railway Crossing Ahead	Wc-4	East Side		1110
286	7th Concession	HBM	N44.42949 W77.84222	0.5	300 x 600	P	tab: Poor Visibility		East Side		1110
287	7th Concession	HBM	N44.42247 W77.83969	1.0	600 x 750	P	Maximum Speed 60 km/h	Rb-1A	East Side	This sign is superfluous, remove	1111
288	7th Concession	HBM	N44.42247 W77.83969	1.0	600 x 750	P	tab: km/h		East Side		1111
289	7th Concession	HBM	N44.40668 W77.83557	1.0	600 x 750	P	Maximum Speed 60 km/h	Rb-3	East Side		1113
290	7th Concession	HBM	N44.40668 W77.83557	1.0	600 x 750	P	tab: km/h		East Side		1113
291	7th Concession	HBM	N44.40668 W77.83557	1.0	600 x 750	P	tab: Begins		East Side		1113
292	7th Concession, Trent River Road	HBM	N44.40654 W77.83557	1.0	600 x 600	G	Stop Sign	Ra-1	NW Corner		1114
293	7th Concession, Trent River Road	HBM	N44.40643 W77.83553	0.5		F	Street Sign - Trent River Road		South Side		1115
294	7th Concession, Trent River Road	HBM	N44.40643 W77.83553	0.5		F	Street Sign - South Belmont 7th Line		South Side		1115
295	Trent River Road	HBM	N44.40639 W77.83550	0.5	1200 x 1200	G	Checkerboard <->	Wa-108 LR	South Side		1116
296	Trent River Road	HBM	N44.40652 W77.83475	1.5	600 x 900	G	Maximum Speed 50 km/h	Rb-1A	South Side		1117
297	Trent River Road	HBM	N44.41073 W77.80770	1.0	600 x 600	G	Stop Ahead Sign	Wb-1	South Side		1118
298	Trent River Road	HBM	N44.41142 W77.80512	0.5	600 x 600	G	Load Restriction		North Side		1119
299	Trent River Road	HBM	N44.41142 W77.80512	0.5	300 x 600	G	5 tonnes per axle	Rb-76	North Side		1119
300	Trent River Road	HBM	N44.41142 W77.80512	0.5	300 x 600	G	tab - Mar 1 to Apr 30		North Side		1119
301	Trent River Road, County Road 50	County of Peterborough	N44.41149 W77.80491	0.5	750 x 750	G	Stop Sign	Ra-101	SW Corner		1120
302	Trent River Road, County Road 50	County of Peterborough	N44.41165 W77.80508	1.0		G	Street Sign - Trent River Road	G216	NW Corner		1121
303	Trent River Road, County Road 50	County of Peterborough	N44.41165 W77.80508	1.0		G	Street Sign - County Road 50	G216	NW Corner		1121
304	4th Line	HBM	N44.41998 W77.78250	1.0	600 x 900	G	Maximum Speed 50 km/h	Rb-1A	South Side		1123
305	4th Line	HBM	N44.43896 W77.80637	1.0	900 x 900	G	Stop Ahead Sign	Wb-101	East Side		1124
306	4th Line, County Road 50	MTO	N44.44120 W77.80749	1.0	750 x 750	G	Stop Sign	Ra-101	SE Corner		1126
307	4th Line, County Road 50	MTO	N44.44127 W77.80774	1.0	1200 x 1200	G	Checkerboard <->	Wa-108 LR	North Side		1127
308	Dewey Road	HBM	N44.42768 W77.75951	1.5	450 x 450	G	No Exit	Wa-31	North Side		1129
309	Dewey Road	HBM	N44.42762 W77.75948	0.5	450 x 450	G	No Exit	Wa-31	South Side		1130
310	Dewey Road, Concession Road 2	HBM	N44.42752 W77.75977	0.5	900 x 900	G	Checkerboard <->	Wa-8LR	South Side		1131
311	Concession Road 2	HBM	N44.42767 W77.75986	0.5		G	Street Sign - 2nd Concession Road	G216	NW Corner		1132
312	Concession Road 2	HBM	N44.42767 W77.75986	0.5		G	Street Sign - Dewey Road	G216	NW Corner		1132
313	Concession Road 2, Dewey Road	MTO	N44.42767 W77.75986	0.5	600 x 600	G	Stop Sign	Ra-1	NW Corner		1133
314	Concession Road 2, Highway 7	MTO	N44.45357 W77.77518	0.5	600 x 600	G	Stop Sign	Ra-1	SE Corner		1135
315	2nd Line	HBM	N44.47817 W77.78946	1.0	600 x 900	G	Maximum Speed 60 km/h Ahead	Rb-5	NW Corner		
316	2nd Line	HBM	N44.47775 W77.78912	2.5	600 x 900	P	Maximum Speed	Rb-1A	East Side		1137
317	2nd Line	HBM	N44.47775 W77.78912	2.5	200 x 600	P	tab: km/h		East Side		1137
318	2nd Line	HBM	N44.47775 W77.78912	2.5	200 x 600	P	tab: Ends	Rb-85t	East Side		1137
319	2nd Line	HBM	N44.47718 W77.78901	2.0	600 x 900	P	Maximum Speed 60 km/h	Rb-3	West Side		1139
320	2nd Line	HBM	N44.47718 W77.78901	2.0	200 x 600	P	tab: Begins		West Side		1139
321	2nd Line	HBM	N44.47408 W77.78737	2.0	600 x 600	P	Hidden Driveway		East Side		1140
322	2nd Line	HBM	N44.46724 W77.78396	1.0	600 x 900	F	Maximum Speed 60 km/h	Rb-1A	East Side		1141
323	2nd Line	HBM	N44.46724 W77.78396	1.0	600 x 900	F	tab: km/h		East Side		1141
324	2nd Line	HBM	N44.46348 W77.78133	1.0	600 x 900	P	Maximum Speed 60 km/h	Rb-1A	East Side		1142
325	2nd Line	HBM	N44.45910 W77.77875	0.5	600 x 600	F	Hidden Driveway		West Side		1143
326	2nd Line	HBM	N44.45543 W77.77658	2.0	900 x 900	F	Stop Ahead Sign	Wb-101	West Side		1144
327	2nd Line	HBM	N44.45391 W77.77552	1.0	900 x 600	F	Maximum Speed 60 km/h	Rb-1A	East Side		1145
328	2nd Line	HBM	N44.45391 W77.77552	1.0	900 x 600	F	tab: km/h		East Side		1145
329	2nd Line	HBM	N44.45391 W77.77552	1.0	200 x 600	F	tab: Begins		East Side		1145
330	2nd Line, Highway 7	MTO	N44.45369 W77.77555	1.0	750 x 750	P	Stop Sign	Ra-101	NW Corner		1146

Sign Number	Road(s)	Jurisdiction (Assumed)	Location (Latitude and Longitude)	Offset from E <sub>t</sub>	Size (mm x mm)	Condition	Description	Replacement Code (MTO)	Location	Comments	Picture ID
331	Blairton Road, Highway 7	MTO	N44.45881 W77.75808	1.0	750 x 750	P	Stop Sign	Ra-101	NW Corner		1147
332	Blairton Road	HBM	N44.45905 W77.75810	2.5	900 x 600	F	Maximum Speed 50 km/h	Rb-3	East Side		1148
333	Blairton Road	HBM	N44.45905 W77.75810	2.5	900 x 600	F	tab: km/h		East Side		1148
334	Blairton Road	HBM	N44.45905 W77.75810	2.5	200 x 600	F	tab: Begins		East Side		1148
335	Blairton Road	HBM	N44.46747 W77.76448	1.0	900 x 600	P	Maximum Speed 50 km/h	Rb-1A	West Side		1150
336	Blairton Road	HBM	N44.46747 W77.76448	1.0	900 x 600	P	tab: km/h		West Side		1150
337	Blairton Road, Cole Road	HBM	N44.46768 W77.76449	1.0	900 x 900	P	Checkerboard <->	Wa-8LR	East Side		1151
338	Blairton Road, Cole Road	HBM	N44.46767 W77.76472	1.0		G	Street Sign - Cole Road	G216	NW Corner		1153
339	Blairton Road, Cole Road	HBM	N44.46775 W77.76453	1.0		G	Street Sign - Blairton Road	G216	NE Corner		1154
340	Blairton Road	HBM	N44.46776 W77.76459	1.0	450 x 450	P	No Exit	Wa-31	East Side		1152
341	Blairton Road	HBM	N44.46867 W77.76530	1.0	600 x 900	P	Maximum Speed 50 km/h	Rb-1A	East Side		1155
342	Blairton Road	HBM	N44.46867 W77.76530	1.0	600 x 900	P	tab: km/h		East Side		1155
343	Blairton Road	HBM	N44.48398 W77.77663	1.0	900 x 300	G	Hazard Sign	Wa-33R	East Side	Does not refer to any obvious hazard, remove	1157
344	Blairton Road	HBM	N44.48393 W77.77683	0.5	900 x 600	F	HBM Turnaround Sign		End		1158
345	Blairton Road	HBM	N44.47945 W77.77309			NEW -----	Curve Warning	Wa-6L		Place just south of triple-curve on Blairton Road	
346	Blairton Road	HBM				NEW -----	Curve Warning	Wa-6R		Place just north of triple-curve on Blairton Road	
347	Blairton Road	HBM	N44.47536 W77.77069	3.0	900 x 600	P	Maximum Speed 50 km/h	Rb-1A	West Side		1160
348	Blairton Road	HBM	N44.47536 W77.77069	3.0	900 x 600	P	tab: km/h		West Side		1160
349	Blairton Road, Highway 7	MTO	N44.45863 W77.75785	1.0	750 x 750	G	Stop Sign	Ra-101	SE Corner		1162
350	Blairton Trailer Park Road	HBM	N44.46579 W77.76291	1.0	600 x 600	P	No Exit	Wa-31	South Side		1164
351	Blairton Trailer Park Road, Blairton Road	HBM	N44.46582 W77.76305	1.0	600 x 600	F	Yield Sign	Ra-2	NE Corner		1165
352	Blairton Trailer Park Road	HBM	N44.46568 W77.76302	1.0		F	Street Sign - Blairton Road	G216	SE Corner		1166
353	Blairton Trailer Park Road	HBM	N44.46568 W77.76302	1.0		F	Street Sign - Blairton Trailer Park Road	G216	SE Corner		1166
354	Blairton Trailer Park Road	HBM	N44.46568 W77.76321	1.0		F	Street Sign - Blairton Road	G216	Median		1167
355	Blairton Trailer Park Road	HBM	N44.46568 W77.76321	1.0		F	Street Sign - Queen Street	G216	Median		1167
356	Cole Road, Blairton Road	HBM	N44.46753 W77.76481	1.0	600 x 600	G	Yield Sign	Ra-2	SW Corner		1168
357	Cole Road, 2nd Line	HBM	N44.46289 W77.78081	1.0	600 x 600	G	Stop Sign	Ra-1	NE Corner		1170
358	Cole Road	HBM	N44.46285 W77.78094	1.5		G	Street Sign - Cole Road	G216	NE Corner		1171
359	Cole Road	HBM	N44.46285 W77.78094	1.5		G	Street Sign - 2nd Line	G216	NE Corner		1171
360	First Road	HBM	N44.45373 W77.73664	0.0	900 x 900	F	Checkerboard	Wa-8LR	End		1173
361	First Road	HBM	N44.46054 W77.74050	1.0	450 x 450	P	No Exit	Wa-31	West Side		1174
362	First Road, Highway 7	Marmora TWP	N44.46207 W77.74138	1.0		F	Street Sign - First Road	G216	SW Corner		1175
363	First Road, Highway 7	Marmora TWP	N44.46207 W77.74138	1.0		F	Street Sign - Highway 7	G216	SW Corner		1175
364	First Road, Highway 7	MTO	N44.46220 W77.74128	1.0	750 x 750	F	Stop Sign	Ra-101	SE Corner		1176
365	First Road, Highway 7	MTO	N44.46236 W77.74152	1.0	750 x 750	G	Stop Sign	Ra-101	NW Corner		1177
366	First Road, Highway 7	Marmora TWP	N44.46249 W77.74159	1.0		F	Street Sign - Highway 7	G216	NE Corner		1178
367	First Road	HBM	N44.46259 W77.74148	0.5	600 x 600	P	No Exit	Wa-31	East Side		1179
368	First Road	HBM	N44.46902 W77.74477	0.0	750 x 750	F	Checkerboard	Wa-8LR	End		1180
369	Mile of Memories Road	HBM	N44.48582 W77.81780	0.5	300 x 600	F	No Parking, Any Time	Rb-51	East Side		1183
370	Mile of Memories Road	HBM	N44.48587 W77.81804	0.5	300 x 300	F	No Parking (In Driveway)	Modified Rb-51	West Side		1184
371	Mile of Memories Road	HBM	N44.48578 W77.81801	0.5	300 x 600	P	Angle Parking Only		West Side		1185
372	Mile of Memories Road	HBM	N44.48538 W77.81765	1.0	600 x 600	G	Watch for Children		East Side		1186
373	Mile of Memories Road	HBM	N44.48522 W77.81772	1.0	750 x 600	G	No Parking	Rb-51	West Side		1187
374	Mile of Memories Road	HBM	N44.48504 W77.81767	1.0	300 x 300	G	No Parking	Rb-51	West Side		1188
375	Mile of Memories Road	HBM	N44.48488 W77.81761	1.0	300 x 300	G	No Parking	Rb-51	West Side		1188
376	Mile of Memories Road	HBM	N44.48472 W77.81761	1.0	300 x 300	G	No Parking	Rb-51	West Side		1199
377	Mile of Memories Road, County Road 48	County of Peterborough	N44.48254 W77.81684	0.5	600 x 600	F	Hidden Driveway		West Side		1194
378	Mile of Memories Road	HBM	N44.46957 W77.81344	0.5	750 x 750	G	Stop Sign	Ra-101	NW Corner		1192



Sign Number	Road(s)	Jurisdiction (Assumed)	Location (Latitude and Longitude)	Offset from E <sub>t</sub>	Size (mm x mm)	Condition	Description	Replacement Code (MTO)	Location	Comments	Picture ID
379	Mile of Memories Road	HBM	N44.46961 W77.81328	1.5		G	Street Sign - Mile of Memories Road	G216	NE Corner		1193
380	11th Line, North School Road	HBM	N44.46959 W77.81338	2.0	600 x 600	G	Yield Sign	Ra-2	SE Corner		1195
381	11th Line, Highway 7	MTO	N44.41915 W77.92229	0.1	750 x 750	F	Stop Sign	Ra-101	NW Corner		1196
382	11th Line, Highway 7	MTO	N44.41901 W77.92201	0.1	750 x 750	G	Stop Sign	Ra-101	SE Corner		1197
383	11th Line	HBM	N44.41883 W77.92194	1.0	750 x 750	G	Stop Before Crossing		East Side		1199
384	11th Line	HBM	N44.41833 W77.92172	1.0	750 x 750	G	Be Prepared to Stop		East Side		1200
385	11th Line	HBM	N44.41783 W77.92145	1.0	750 x 750	P	Railway Crossing Ahead	Wc-4	East Side		1201
386	11th Line	HBM	N44.41783 W77.92145	1.0	750 x 750	P	tab: Restricted Visibility		East Side		1201
387	11th Line, Old Norwood Road	HBM		1.0		G	Street Sign - Old Norwood Road	G216	West Side	Straighten post	1202
388	11th Line, Old Norwood Road	HBM		1.0		G	Street Sign - 11th Line	G216	West Side	Straighten post	1202
389	11th Line	HBM	N44.41685 W77.92095	1.0	900 x 900	G	Stop Ahead Sign	Wb-101	West Side		1203
390	11th Line, County Road 42	County of Peterborough	N44.39071 W77.90832	0.5	600 x 600	G	Stop Sign	Ra-1	NW Corner		1206
391	11th Line, County Road 42	County of Peterborough	N44.39068 W77.90816	1.5		G	Street Sign - 11th Line	G216	NE Corner		1207
392	10th Concession South, County Road 42	County of Peterborough	N44.39463 W77.89165	1.0	600 x 600	G	Stop Sign	Ra-1	NW Corner		1208
393	10th Concession South, County Road 42	County of Peterborough	N44.39468 W77.89152	0.5		G	Street Sign - Belmont South Concession Road 10		NE Corner		1209
394	10th Concession South, Old Norwood Road	HBM	N44.42103 W77.90371	0.5	600 x 600	F	Stop Sign	Ra-1	SE Corner		1212
395	Old Norwood Road, 11th Line	HBM	N44.41766 W77.92113	1.0	600 x 600	F	Stop Sign	Ra-1	NE Corner	Straighten post	1214
396	Old Norwood Road	HBM	N44.42050 W77.90656	2.0	600 x 600	P	Playground Ahead	Wc-3	South Side	There is no playground in the area.... "Watch for Children" is perhaps what should have been in place	1215
397	Old Norwood Road, 10th Concession South	HBM	N44.42129 W77.90394	1.5	900 x 900	P	Checkerboard <->	Wa-8LR	North Side		1216
398	Old Norwood Road, 10th Concession South	HBM	N44.42130 W77.90386	1.5		G	Street Sign - Belmont South Concession Road 10	G216	North Side		1217
399	Old Norwood Road, 10th Concession South	HBM	N44.42130 W77.90386	1.5		G	Street Sign - Old Norwood Road	G216	North Side		1217
400	Old Norwood Road	HBM	N44.42290 W77.89704	1.0	600 x 600	P	Playground Ahead	Wc-3	North Side	There is no playground in the area.... "Watch for Children" is perhaps what should have been in place	1219
401	Old Norwood Road	HBM	N44.42292 W77.89675	0.5	900 x 300	P	Hazard Sign	Wa-33R	South Side		1220
402	Old Norwood Road	HBM	N44.42295 W77.89653	0.5	900 x 300	P	Hazard Sign	Wa-33R	South Side		1221
403	Old Norwood Road, Concession Street	County of Peterborough	N44.42473 W77.88857	1.5		G	Street Sign - Old Norwood Road		NW Corner		1223
404	Old Norwood Road, Concession Street	County of Peterborough	N44.42473 W77.88857	1.5		G	Street Sign - Concession Street		NW Corner		1223
405	Old Norwood Road, Concession Street	County of Peterborough	N44.42456 W77.88853	0.5	600 x 600	G	Stop Sign	Ra-1	SW Corner		1224
406	Old Norwood Road, Concession Street	County of Peterborough	N44.42477 W77.88822	1.0	600 x 600	G	Stop Sign	Ra-1	NE Corner		1225
407	Old Norwood Road	HBM	N44.42474 W77.88784	1.0	750 x 600	P	Maximum Speed 60 km/h	Rb-3	South Side		1226
408	Old Norwood Road	HBM	N44.42474 W77.88784	1.0	200 x 600	P	tab (km/h)		South Side		1226
409	Old Norwood Road	HBM	N44.42474 W77.88784	1.0	200 x 600	P	tab (Begins)		South Side		1226
410	Old Norwood Road	HBM	N44.42668 W77.87952	1.0	750 x 600	P	Maximum Speed 60 km/h	Rb-1A	South Side	Not necessary, remove	1228
411	Old Norwood Road	HBM	N44.42668 W77.87952	1.0	200 x 600	P	tab (km/h)		South Side		1228
412	Old Norwood Road	HBM	N44.42676 W77.87955	1.0	750 x 600	F	Maximum Speed 60 km/h	Rb-1A	North Side	Not necessary, remove	1229
413	Old Norwood Road	HBM	N44.42676 W77.87955	1.0	200 x 600	F	tab (km/h)		North Side		1229
414	Old Norwood Road	HBM	N44.42679 W77.87884	1.0	750 x 750	F	Playground Ahead	Wc-3	South Side	There is no playground in the area.... "Watch for Children" is perhaps what should have been in place	1230
415	Old Norwood Road	HBM	N44.42843 W77.87235	1.0	750 x 750	G	Playground Ahead	Wc-3	North Side	There is no playground in the area.... "Watch for Children" is perhaps what should have been in place	1231
416	Old Norwood Road	HBM	N44.42849 W77.87221	1.0	750 x 600	P	Maximum Speed 60 km/h	Rb-3	North Side		1232
417	Old Norwood Road	HBM	N44.42849 W77.87221	1.0	200 x 600	P	tab (km/h)		North Side		1232
418	Old Norwood Road	HBM	N44.42849 W77.87221	1.0	200 x 600	P	tab (Begins)		North Side		1232
419	Old Norwood Road, Concession Road 8 South	HBM	N44.42883 W77.87025	1.0	600 x 600	G	Stop Sign	Ra-1	SW Corner		1233
420	Old Norwood Road, Concession Road 8 South	HBM	N44.42882 W77.87019	1.0		F	Street Sign - Old Norwood Road	G216	SW Corner		1234

Sign Number	Road(s)	Jurisdiction (Assumed)	Location (Latitude and Longitude)	Offset from E <sub>t</sub>	Size (mm x mm)	Condition	Description	Replacement Code (MTO)	Location	Comments	Picture ID
421	Old Norwood Road, Concession Road 8 South	HBM	N44.42882 W77.87019	1.0		F	Street Sign - Concession 8 South	G216	SW Corner		1234
422	Old Norwood Road, Concession Road 8 South	HBM	N44.42897 W77.87000	1.0	600 x 600	G	Stop Sign	Ra-1	NE Corner		1235
423	Old Norwood Road	HBM	N44.42938 W77.86822	NEW			4 Hazard Signs at bridge needed				
424	Old Norwood Road	HBM	N44.42938 W77.86789	1.0	600 x 600	G	Turn Ahead	Wa-1L	South Side		1236
425	Old Norwood Road	HBM	N44.42938 W77.86789	1.0	450 x 450	G	tab: 30 km/h	Wa-7t	South Side		1236
426	Old Norwood Road, Weller Road	HBM	N44.42971 W77.86669	1.0		G	Street Sign - Weller Road	G216	SE Corner		1237
427	Old Norwood Road, Weller Road	HBM	N44.42971 W77.86669	1.0		G	Street Sign - Old Norwood Road	G216	SE Corner		1237
428	Weller Road	HBM	N44.43045 W77.86647	1.0	600 x 600	G	Turn Ahead	Wa-1R	West Side		1239
429	Weller Road	HBM	N44.43045 W77.86647	1.0	450 x 450	G	tab: 30 km/h	Wa-7t	West Side		1239
430	Weller Road	HBM	N44.43104 W77.86620	1.0	900 x 900	G	Stop Ahead Sign	Wb-101	East Side		1240
431	Weller Road	HBM	N44.43113 W77.86617	1.0	750 x 750	P	Railway Crossing Ahead	Wc-4	East Side		1241
432	Weller Road	HBM	N44.43113 W77.86617	1.0	450 x 450	P	tab: Restricted Visibility		East Side		1241
433	Weller Road	HBM	N44.43167 W77.86600	1.0	750 x 750	P	Be Prepared to Stop		East Side		1242
434	Weller Road	HBM	N44.43216 W77.86579	1.0	750 x 750	F	Stop Before Crossing		East Side		1243
435	Weller Road	HBM	N44.43224 W77.86592	1.0	600 x 600	P	Poor Visibility		West Side		1244
436	Weller Road, Highway 7	MTO	N44.43227 W77.86577	1.0	750 x 750	G	Stop Sign	Ra-101	SE Corner		1245
437	Weller Road, County Road 48	County of Peterborough	N44.43699 W77.86256	1.0		G	Street Sign - Weller Road	G216	SW Corner		1247
438	Weller Road, County Road 48	County of Peterborough	N44.43709 W77.86241	0.5	600 x 600	F	Stop Sign	Ra-1	SE Corner		1248
439	Weller Road	HBM	N44.43441 W77.86480	1.0	900 x 900	F	Stop Ahead Sign	Wb-101	West Side		1249
440	Weller Road	HBM	N44.43249 W77.86578	0.3	750 x 750	G	Stop Sign	Ra-101	West Side		1250
441	Brown's Line, Church Street	HBM	N44.39819 W77.87537	2.0	900 x 900	G	Checkerboard -->	Wa-8R	SE Corner	Inappropriate location, Remove	1255
442	Brown's Line, Church Street	HBM	N44.39828 W77.87559	2.5	900 x 900	G	Checkerboard <-->	Wa-8LR	North Side		1256
443	Brown's Line	HBM	N44.39809 W77.87588	1.0	900 x 600	G	Maximum Speed 50 km/h Ahead	Rb-5	South Side	No posted 50 exists ahead... consider removing	1257
444	Brown's Line, County Road 30	County of Peterborough	N44.39820 W77.87609	1.0	750 x 750	G	Stop Sign	Ra-101	NE Corner		1258
445	Brown's Line, County Road 30	County of Peterborough	N44.39834 W77.87541	1.0		F	Street Sign - Brown's Line	G216	North Side		1259
446	Brown's Line, Church Street	HBM	N44.39834 W77.87541	1.0		F	Street Sign - Church Street	G216	North Side		1259
447	Brown's Line	HBM		1.0	600 x 600	F	Sharp Curve Ahead	Wa-2L	South Side		
448	Brown's Line, 8th Concession	HBM	N44.40286 W77.85866	4.0	750 x 600	G	"Notice - By-Law #1999-22...." No Dumping		SE Corner		1261
449	Brown's Line, 8th Concession	HBM	N44.40290 W77.85871	2.0		F	Street Sign - Brown's Line	G216	SE Corner		1262
450	Brown's Line, 8th Concession	HBM	N44.40290 W77.85871	2.0		F	Street Sign - Concession 8	G216	SE Corner		1262
451	Concession 8	HBM	N44.41215 W77.86265	2.0	750 x 600	P	Maximum Speed 60 km/h	Rb-1A	East Side		1264
452	Concession 8	HBM		NEW			Sharp Curve Ahead	Wa-1R	West Side	Install just north of intersection with Brown's Line	
453	Concession 8	HBM	N44.41215 W77.86265	2.0	200 x 600	P	tab: km/h		East Side		1264
454	Concession 8	HBM	N44.41382 W77.86355	1.5	750 x 750	P	Hidden Driveway		West Side		1265
455	Concession 8	HBM	N44.42754 W77.86944	1.0	750 x 600	F	Maximum Speed 60 km/h	Rb-1A	East Side		1267
456	Concession 8	HBM	N44.42754 W77.86944	1.0	200 x 600	F	tab (km/h)		East Side		1267
457	Concession 8	HBM	N44.42860 W77.87006	2.0	750 x 600	F	Maximum Speed 60 km/h	Rb-1A	West Side		1268
458	Concession 8	HBM	N44.42860 W77.87006	2.0	200 x 600	F	tab (km/h)		West Side		1268
459	Concession 8	HBM	N44.42971 W77.87043	0.5	300 x 900	G	Hazard Sign	Wa-33R	West Side		1269
460	Concession 8	HBM	N44.42973 W77.87053	0.5	300 x 900	G	Hazard Sign	Wa-33L	East Side		1270
461	Concession 8	HBM	N44.42984 W77.87057	0.5	300 x 900	G	Hazard Sign	Wa-33R	West Side		1271
462	Concession 8	HBM	N44.42985 W77.87045	0.5	300 x 900	G	Hazard Sign	Wa-33L	East Side		1272
463	Concession 8	HBM	N44.43042 W77.87079	1.0	750 x 600	P	Maximum Speed 40 km/h Ahead	Rb-5	East Side		1274
464	Concession 8	HBM	N44.43042 W77.87079	1.0	200 x 600	P	tab (km/h)		East Side		1274
465	Concession 8	HBM	N44.43097 W77.87105	2.0	750 x 450	G	Water Source Protection		East Side		1275
466	Concession 8	HBM	N44.43111 W77.87114	2.0	750 x 450	P	Maximum Speed 40 km/h	Rb-3	East Side		1276
467	Concession 8	HBM	N44.43111 W77.87114	2.0	200 x 600	P	tab (km/h)		East Side		1276

Sign Number	Road(s)	Jurisdiction (Assumed)	Location (Latitude and Longitude)	Offset from E <sub>t</sub>	Size (mm x mm)	Condition	Description	Replacement Code (MTO)	Location	Comments	Picture ID
468	Concession 8	HBM	N44.43111 W77.87114	2.0	200 x 600	P	tab (Begins)		East Side		1276
469	Concession 8	HBM	N44.43108 W77.87123	1.5	750 x 450	P	Maximum Speed 40 km/h	Rb-1A	East Side		1277
470	Concession 8	HBM	N44.43108 W77.87123	1.5	200 x 600	P	tab (km/h)		East Side		1277
471	Concession 8	HBM	N44.43146 W77.87121	2.0	750 x 750	P	Railway Crossing Ahead	Wc-4	East Side		1278
472	Concession 8	HBM	N44.43146 W77.87121	2.0	750 x 450	F	tab: Restricted Visibility		East Side		1278
473	Concession 8	HBM	N44.43200 W77.87147	1.0	750 x 750	P	Be Prepared to Stop		East Side		1279
474	Concession 8	HBM	N44.43203 W77.87147	1.0		G	Street Sign - Mary Street	G216	East Side		1280
475	Concession 8	HBM	N44.43203 W77.87147	1.0		G	Street Sign - Concession 8	G216	East Side		1280
476	Mary Street	HBM	N44.43245 W77.87179	1.0	750 x 600	P	Maximum Speed 40 km/h	Rb-1A	East Side		1281
477	Mary Street	HBM	N44.43245 W77.87179	1.0	200 x 600	P	tab (km/h)		East Side		1281
478	Mary Street	HBM	N44.43271 W77.87183	1.5	750 x 750	F	Stop Before Crossing		East Side		1282
479	Mary Street, Industrial Park Road	HBM	N44.43271 W77.87200	1.5		P	Street Sign - Industrial Park Road	G216	NE Corner		1283
480	Mary Street	HBM	N44.43287 W77.87201	1.0	750 x 750	F	Stop Before Crossing		West Side		1284
481	Mary Street	HBM	N44.43313 W77.87213	1.0	750 x 750	F	Be Prepared to Stop		West Side		1285
482	Mary Street	HBM	N44.43330 W77.87221	1.0	750 x 750	F	Railway Crossing Ahead	Wc-4	West Side		1287
483	Mary Street	HBM	N44.43330 W77.87221	1.0	750 x 450	F	tab: Restricted Visibility		West Side		1287
484	Mary Street, Ottawa Street East	HBM	N44.43345 W77.87210	1.0	600 x 600	F	Stop Sign	Ra-1	SE Corner		1288
485	Mary Street, Ottawa Street East	HBM	N44.43349 W77.87209	2.0		G	Street Sign - Ottawa Street	G216	NW Corner		1289
486	Mary Street	HBM	N44.43349 W77.87209	0.0		F	Street Sign - Mary Street	G216	NW Corner		1289
487	Industrial Park Road	HBM	N44.43272 W77.87239	1.0	900 x 600	G	Maximum Speed 50 km/h	Rb-1A	North Side		1291
488	Industrial Park Road, Mary Street	HBM	N44.43261 W77.87195	2.5	600 x 600	G	Stop Sign	Ra-1	SW Corner		1292
489	Concession 5, County Road 48	HBM	N44.46232 W77.82188	1.0	600 x 600	F	Stop Sign	Ra-1	SE Corner		1294
490	Concession 5, County Road 48	HBM	N44.46232 W77.82201	0.5		F	Street Sign - Concession 5	G216	SW Corner		1295
491	Concession 5	HBM	N44.46232 W77.82201	0.5		F	No Exit	Wa-31	West Side		1295
492	Sawmill Bay Road	HBM	N44.46252 W77.82273	0.5	450 x 450	F	No Exit	Wa-31	East Side		1297
493	Sawmill Bay Road	HBM	N44.46221 W77.82263	1.0	600 x 600	G	Stop Sign	Ra-1	NW Corner		1298
494	Sawmill Bay Road	HBM	N44.46227 W77.82248	2.0		G	Street Sign - Sawmill Bay Road	G216	NE Corner		1299
495	Concession 7, Mid Belmont	HBM	N44.45632 W77.85441	3.0	900 x 900	P	Checkerboard	Wa-108	End		1301
496	Concession 7, Mid Belmont	HBM	N44.44649 W77.84983	2.5	450 x 450	P	No Exit	Wa-31	East Side		1302
497	Concession 7, Mid Belmont	HBM	N44.44583 W77.84974	0.5	600 x 600	P	Stop Sign	Ra-1	NW Corner		1303
498	Concession 7, Mid Belmont	HBM	N44.44585 W77.84976	3.5		F	Street Sign - Mid Belmont Concession 7		NW Corner		1304
499	6th Line	HBM	N44.42195 W77.82750	3.0	900 x 900	P	Checkerboard	Wa-108	End		1305
500	6th Line	HBM	N44.43166 W77.82938	0.5	900 x 600	P	Maximum Speed 40 km/h	Rb-3	East Side		1307
501	6th Line	HBM	N44.43166 W77.82938	0.5	200 x 600	P	tab: Begins		East Side		1307
502	6th Line	HBM	N44.43172 W77.82948	1.0	900 x 600	P	Maximum Speed 40 km/h	Rb-1A	West Side		1308
503	6th Line	HBM	N44.43172 W77.82948	1.0	200 x 600	P	tab: Ends	Rb-85t	West Side		1308
504	6th Line	HBM	N44.43219 W77.82953	1.0	750 x 750	P	Railway Crossing Ahead	Wc-4	East Side		1309
505	6th Line	HBM	N44.43219 W77.82953	1.0	750 x 450	F	tab: Restricted Visibility		East Side		1309
506	6th Line	HBM	N44.43252 W77.82958	0.5	750 x 750	P	Be Prepared to Stop		East Side		1310
507	6th Line	HBM	N44.43309 W77.82987	0.5	750 x 750	F	Stop before Crossing		West Side		1312
508	6th Line	HBM	N44.43358 W77.83006	1.0	750 x 750	F	Be Prepared to Stop		West Side		1313
509	6th Line	HBM	N44.43408 W77.83018	0.5	750 x 750	P	Railway Crossing Ahead	Wc-4	West Side		1314
510	6th Line	HBM	N44.43408 W77.83018	0.5	750 x 450	G	tab: Restricted Visibility		West Side		1314
511	6th Line	HBM	N44.43439 W77.83013	0.5	900 x 600	P	Maximum Speed 40 km/h	Rb-1A	East Side		1315
512	6th Line	HBM	N44.43439 W77.83013	0.5	200 x 600	P	tab: Ends	Rb-85t	East Side		1315
513	6th Line	HBM	N44.43437 W77.83026	0.5	900 x 600	P	Maximum Speed 40 km/h	Rb-3	West Side		1316
514	6th Line	HBM	N44.43437 W77.83026	0.5	200 x 600	P	tab: Begins		West Side		1316
515	6th Line	HBM	N44.43517 W77.83046	0.5	900 x 600	P	Maximum Speed 40 km/h Ahead	Rb-5	West Side		1317

Sign Number	Road(s)	Jurisdiction (Assumed)	Location (Latitude and Longitude)	Offset from E <sub>t</sub>	Size (mm x mm)	Condition	Description	Replacement Code (MTO)	Location	Comments	Picture ID
516	6th Line	HBM	N44.43570 W77.83064	0.5	750 x 600	P	Neighborhood Watch Community	G512	West Side		1318
517	6th Line	HBM	N44.43616 W77.83075	1.0	450 x 450	F	No Exit	Wa-31	West Side		1319
518	6th Line, Highway 7	MTO	N44.43633 W77.83065	0.5	600 x 600	P	Stop Sign	Ra-1	SE Corner		1320
519	6th Line, Highway 7	MTO	N44.43655 W77.83083	1.0	600 x 600	P	Stop Sign	Ra-1	NW Corner		1321
520	6th Line	HBM	N44.43755 W77.83092	1.5	900 x 600	G	Maximum Speed 60 km/h	Rb-3	East Side		1322
521	6th Line	HBM	N44.43755 W77.83092	1.5	200 x 600	G	tab: Begins		East Side		1322
522	6th Line	HBM	N44.43900 W77.83139	1.0	900 x 900	P	Stop Ahead Sign	Wb-101	West Side		1323
523	6th Line	HBM	N44.44556 W77.83327	1.0	450 x 300	G	Recycling Depot Turn-Off		East Side		1325
524	6th Line	HBM	N44.44556 W77.83327	1.0	450 x 300	G	tab: <-		East Side		1325
525	6th Line	HBM	N44.44573 W77.83337	0.2	300 x 900	F	Hazard Sign	Wa-33R	West Side		1326
526	6th Line	HBM	N44.44580 W77.83341	0.2	300 x 900	G	Hazard Sign	Wa-33L	East Side		1327
527	6th Line	HBM	N44.44578 W77.83349	0.2	300 x 900	G	Hazard Sign	Wa-33R	East Side		1328
528	6th Line	HBM	N44.44570 W77.83345	0.2	300 x 900	G	Hazard Sign	Wa-33L	West Side		1329
529	6th Line	HBM	N44.44616 W77.83355	0.5	750 x 750	P	Truck Entrance Right		East Side		1330
530	6th Line	HBM	N44.44705 W77.83402	0.5	450 x 300	G	Recycling Depot Turn-Off		West Side		1331
531	6th Line	HBM	N44.44705 W77.83402	0.5	450 x 300	G	tab: -->		West Side		1331
532	6th Line	HBM	N44.44953 W77.83485	0.5	750 x 750	P	Truck Entrance Left		West Side		1332
533	6th Line, County Road 48	County of Peterborough	N44.45180 W77.83546	0.5	750 x 750	G	Stop Sign	Ra-101	SE Corner		1334
534	6th Line, County Road 48	County of Peterborough	N44.45180 W77.83543	3.5		F	Street Sign - 6th Line	G216	SE Corner		1335
535	6th Line	HBM	N44.45138 W77.83543	0.5	900 x 600	G	Maximum Speed 60 km/h	Rb-1A	West Side		1333
536	6th Line	HBM	N44.45138 W77.83543	0.5	200 x 600	G	tab: Begins		West Side	begins tab is incorrect, Remove	1333
537	6th Line, County Road 48	County of Peterborough	N44.45206 W77.83569	0.5	750 x 750	G	Stop Sign	Ra-101	NW Corner		1336
538	6th Line	HBM	N44.45222 W77.83564	1.0	1200 x 900	G	Load Limit	Rb-63A	East Side		1337
539	6th Line	HBM	N44.45222 W77.83564	1.0	600 x 300	G	tab: 11 km Ahead		East Side		1337
540	6th Line	HBM	N44.45269 W77.83579	1.5	900 x 600	G	Maximum Speed 60 km/h	Rb-1A	East Side		1338
541	6th Line	HBM	N44.45269 W77.83579	1.5	200 x 600	G	tab: Begins		East Side	begins tab is incorrect	1338
542	6th Line	HBM	N44.45300 W77.83604	0.5	450 x 300	G	Recycling Depot		West Side		1339
543	6th Line	HBM	N44.45300 W77.83604	0.5	450 x 300	G	tab: ^		West Side		1339
544	6th Line	HBM	N44.45939 W77.83837	1.0	750 x 750	P	School Bus Stop Ahead	Wc-26	East Side		1341
545	6th Line	HBM	N44.46303 W77.84023	1.0	750 x 750	F	Hidden Driveway		West Side		1342
546	6th Line	HBM	N44.46328 W77.84037	1.0	750 x 750	P	School Bus Stop Ahead	Wc-26	West Side		1343
547	6th Line	HBM	N44.46952 W77.84317	2.5	900 x 600	G	Maximum Speed 60 km/h	Rb-1A	East Side		1344
548	6th Line	HBM	N44.46955 W77.84330	1.0	900 x 600	G	Maximum Speed 60 km/h	Rb-1A	West Side		1345
549	6th Line	HBM	N44.47881 W77.84716	1.5	900 x 600	G	Maximum Speed 60 km/h	Rb-1A	West Side	Redundant - Remove	1346
550	6th Line	HBM	N44.47879 W77.84727	1.0	900 x 600	G	Maximum Speed 60 km/h	Rb-1A	East Side	Redundant - Remove	1347
551	6th Line	HBM	N44.48750 W77.85124	0.8	750 x 750	F	Deer Crossing	Wa-11	West Side	Not doubled on other side? Missing sign	1348
552	6th Line	HBM	N44.48750 W77.85124	0.8	600 x 200	F	tab: 4km	Wa-6t	West Side	Not doubled on other side? Missing sign	1348
553	6th Line	HBM		NEW -----			Deer Crossing	Wa-11	East Side	Install just North of intersection with County Road 48	
554	6th Line	HBM		NEW -----			tab: 4km	Wa-6t	East Side	Install just North of intersection with County Road 48	
555	6th Line	HBM	N44.48819 W77.85158	0.8	600 x 900	G	Maximum Speed 60 km/h	Rb-1A	West Side		1349
556	6th Line, Round Lake Road	HBM	N44.48900 W77.85190	1.5		G	Street Sign - Round Lake Road	G216	East Side		1350
557	6th Line, Round Lake Road	HBM	N44.48900 W77.85190	1.5		G	Street Sign - 6th Line	G216	East Side		1350
558	6th Line, Round Lake Road	HBM	N44.48901 W77.85190	1.5	900 x 900	G	Checkerboard <->	Wa-8LR	East Side		1351
559	6th Line	HBM	N44.48920 W77.85194	3.0	1200 x 900	G	Load Limit	Rb-63A	East Side		1352
560	6th Line	HBM	N44.48920 W77.85194	3.0	600 x 300	G	tab: 6 km Ahead		East Side		1352
561	6th Line	HBM	N44.48955 W77.85211	2.0	900 x 600	G	Maximum Speed 60 km/h	Rb-1A	East Side		1353
562	6th Line	HBM	N44.49010 W77.85248	0.5	600 x 600	G	Hidden Intersection		West Side		1354

Sign Number	Road(s)	Jurisdiction (Assumed)	Location (Latitude and Longitude)	Offset from E <sub>p</sub>	Size (mm x mm)	Condition	Description	Replacement Code (MTO)	Location	Comments	Picture ID
563	6th Line	HBM	N44.49219 W77.85321	1.0	750 x 750	G	Intersection on Sharp Curve Ahead	Modified Wa-102L	East Side		1355
564	6th Line	HBM	N44.49219 W77.85321	1.0	450 x 450	G	tab: 40 km/h	Wa-7t	East Side		1355
565	6th Line	HBM	N44.49361 W77.85400	1.5	900 x 600	G	Maximum Speed 60 km/h	Rb-1A	West Side		1356
566	6th Line, Preston Road, Burnt Dam Road	HBM	N44.49429 W77.85418	1.0	600 x 600	G	Yield Sign	Ra-2	NE Corner		1357
567	6th Line, Preston Road, Burnt Dam Road	HBM	N44.49429 W77.85418	1.0	220 x 450	F	tab: Yield	Ra-2t	NE Corner		1357
568	6th Line, Preston Road, Burnt Dam Road	HBM	N44.49429 W77.85417	1.0		G	Street Sign - Preston Road	G216	NE Corner		1358
569	6th Line, Preston Road, Burnt Dam Road	HBM	N44.49429 W77.85417	1.0		G	Street Sign - 6th Line	G216	NE Corner		1358
570	6th Line, Preston Road, Burnt Dam Road	HBM	N44.49429 W77.85417	1.0		G	Street Sign - Burnt Dam Road	G216	NE Corner		1358
571	6th Line, Preston Road, Burnt Dam Road	HBM	N44.49415 W77.85423	0.5	600 x 600	G	Stop Sign	Ra-1	West Side		1359
572	Fire Road 25	HBM	N44.49525 W77.83766	0.0	900 x 600	G	HBM Turnaround Sign		End		1360
573	Fire Road 25	HBM	N44.49730 W77.83879	0.0	450 x 450	F	No Exit	Wa-31	West Side		1361
574	Fire Road 25, Preston Road	HBM	N44.49743 W77.83876	0.5	600 x 600	G	Yield Sign	Ra-2	East Side		1362
575	Fire Road 25, Preston Road	HBM	N44.49743 W77.83876	0.5	220 x 450	P	tab: Yield	Ra-2t	East Side		1362
576	Burnt Dam Road, Sugarbush Lane	HBM	N44.49814 W77.85592	1.0		F	Street Sign - Sugarbush Lane	G216	NE Corner		1365
577	Burnt Dam Road, Sugarbush Lane	HBM	N44.49814 W77.85592	1.0		F	Street Sign - Burnt Dam Road	G216	NE Corner		1365
578	Burnt Dam Road, Sugarbush Lane	HBM	N44.49815 W77.85586	0.5	600 x 600	P	Yield Sign	Ra-2	NE Corner		1366
579	Burnt Dam Road, Sugarbush Lane	HBM	N44.49815 W77.85586	0.5	220 x 450	P	tab: Yield	Ra-2t	NE Corner		1366
580	Burnt Dam Road	HBM	N44.50876 W77.85354	3.0	750 x 750	P	Single Lane Bridge	Wa-24	East Side		1368
581	Burnt Dam Road	HBM	N44.50876 W77.85354	3.0	450 x 450	F	tab: One Lane	Wa-24t	East Side		1368
582	Burnt Dam Road	HBM	N44.51030 W77.85442	2.5	1200 x 900	P	Load Limit	Rb-63A	East Side		1369
583	Burnt Dam Road	HBM	N44.51045 W77.85452	0.0	900 x 300	G	Hazard Sign	Wa-33R	West Side		1370
584	Burnt Dam Road	HBM	N44.51040 W77.85457	0.0	900 x 300	G	Hazard Sign	Wa-33L	East Side		1371
585	Burnt Dam Road	HBM	N44.51068 W77.85474	0.0	900 x 300	G	Hazard Sign	Wa-33R	West Side		1372
586	Burnt Dam Road	HBM	N44.51065 W77.85467	0.0	900 x 300	G	Hazard Sign	Wa-33L	East Side		1373
587	Burnt Dam Road	HBM	N44.50933 W77.85349	1.0	900 x 600	F	"Notice - By-Law #1999-22....." No Dumping	Custom Sign - HBM By-Law	East Side		1374
588	Burnt Dam Road	HBM	N44.50935 W77.85377	1.0	900 x 600	F	Unassumed Road		East Side		1375
589	Burnt Dam Road	HBM		NEW			Winding Road	Wa-6R	East Side	Place just South of Intersection with FR 47	
590	7th Line, North Belmont	HBM	N44.48584 W77.86781	1.0	900 x 600	G	HBM Turnaround Sign		End		1376
591	7th Line, North Belmont	HBM	N44.48592 W77.86790	1.0	900 x 300	G	Hazard Sign	Wa-33R	End		1377
592	7th Line, North Belmont, Round Lake Road	HBM	N44.48394 W77.86710	1.5	600 x 600	G	Stop Sign	Ra-1	NW Corner		1378
593	7th Line, North Belmont	HBM	N44.48391 W77.86708	1.0		G	Street Sign - Round Lake Road	G216	NW Corner		1379
594	7th Line, North Belmont	HBM	N44.48391 W77.86708	1.0		G	Street Sign - North Belmont 7th Line	G216	NW Corner		1379
595	7th Line, North Belmont	HBM	N44.48452 W77.86726	1.0	450 x 450	G	No Exit	Wa-31	East Side		1380
596	Round Lake Road, 6th Line	HBM	N44.48907 W77.85217	0.5	600 x 600	G	Stop Sign	Ra-1	NW Corner		1389
597	Round Lake Road	HBM	N44.48884 W77.85328	1.5	750 x 600	G	Maximum Speed 60 km/h	Rb-1A	North Side		1390
598	Round Lake Road	HBM	N44.48884 W77.85328	1.5	200 x 600	P	tab (km/h)		North Side		1390
599	Round Lake Road	HBM	N44.48884 W77.85328	1.5	200 x 600	P	tab (Begins)		North Side	Begins tab is not necessary	1390
600	Round Lake Road	HBM	N44.48294 W77.87101	2.5	750 x 600	F	Maximum Speed 60 km/h	Rb-1A	North Side		1392
601	Round Lake Road	HBM	N44.48294 W77.87101	2.5	200 x 600	F	tab (km/h)		North Side		1392
602	Round Lake Road	HBM	N44.48284 W77.87093	2.0	750 x 600	F	Maximum Speed 60 km/h	Rb-1A	South Side		1393
603	Round Lake Road	HBM	N44.48284 W77.87093	2.0	200 x 600	F	tab (km/h)		South Side		1393
604	Round Lake Road	HBM	N44.48204 W77.87439	2.0	600 x 600	P	Hidden Driveway		North Side		1394
605	Round Lake Road	HBM	N44.47961 W77.88287	2.5	600 x 600	G	Hidden Entrance		North Side		1395
606	Round Lake Road	HBM	N44.47746 W77.89023	1.5	600 x 600	F	Deer Crossing	Wa-11	South Side	Missing on WB side	1396
607	Round Lake Road	HBM		NEW			Deer Crossing	Wa-11	North Side	Place east of existing sign	

Sign Number	Road(s)	Jurisdiction (Assumed)	Location (Latitude and Longitude)	Offset from E <sub>t</sub>	Size (mm x mm)	Condition	Description	Replacement Code (MTO)	Location	Comments	Picture ID
608	Round Lake Road	HBM	N44.47595 W77.89378	1.0	900 x 600	P	Maximum Speed 60 km/h	Rb-1A	South Side		1397
609	Round Lake Road	HBM	N44.47595 W77.89378	1.0	200 x 600	P	tab (Begins)		South Side	Begins tab is not necessary	1397
610	Round Lake Road	HBM	N44.47570 W77.89447	1.0	1200 x 900	G	Load Limit	Rb-63A	South Side		1398
611	Round Lake Road	HBM	N44.47570 W77.89447	1.0	600 x 300	G	tab: 8 km Ahead		South Side		1398
612	Round Lake Road, County Road 46	County of Peterborough	N44.47579 W77.89451	0.5	600 x 600	G	Stop Sign	Ra-1			1399
613	Round Lake Road, County Road 46	County of Peterborough	N44.47566 W77.89462	2.5		P	Street Sign - Round Lake Road	G216	SE Corner		1400
614	Hubble Road, County Road 47	County of Peterborough	N44.53012 W77.91333	0.5	600 x 600	G	Stop Sign	Ra-1	NE Corner		1401
615	Hubble Road	HBM		NEW -----			Winding Road	Wa-6R	East Side	Place just north of the intersection with County Road 47	
616	Hubble Road	HBM		NEW -----			tab: For 5 km	Wa-6t	East Side	Place just north of the intersection with County Road 47	
617	Hubble Road	HBM		NEW -----			Winding Road	Wa-6L	South Side	Place just east of the intersection with County Road 44	
618	Hubble Road	HBM		NEW -----			tab: For 5 km	Wa-6t	South Side	Place just east of the intersection with County Road 44	
619	Hubble Road, County Road 47	County of Peterborough	N44.53006 W77.91339	1.0		F	Street Sign - Hubble Road	G216	NE Corner		1402
620	Hubble Road, County Road 47	County of Peterborough	N44.53006 W77.91339	1.0		F	Street Sign - County Road 47	G216	NE Corner		1402
621	Hubble Road	HBM	N44.53024 W77.91334	2.0	750 x 600	G	"Notice: This is a Seasonal Limited Maintenance Road..."		East Side		1403
622	Hubble Road	HBM	N44.53063 W77.91332	0.5	900 x 600	F	"Notice - By-Law #1999-22...." No Dumping	ustom Sign - HBM By-l	East Side		1405
623	Hubble Road	HBM	N44.55073 W77.94615	2.5	900 x 600	F	"Notice - By-Law #1999-22...." No Dumping	ustom Sign - HBM By-l	South Side		1406
624	Hubble Road	HBM	N44.55056 W77.94785	0.5	750 x 600	G	"Notice: This is a Seasonal Limited Maintenance Road..."		South Side		1407
625	Hubble Road, County Road 44	County of Peterborough	N44.55028 W77.94923	0.5	600 x 600	G	Stop Sign	Ra-1	SE Corner		1408
626	Hubble Road, County Road 44	County of Peterborough	N44.55030 W77.94925	1.0		G	Street Sign - Hubble Road	G216	SE Corner		1409
627	West Kosh Road, County Road 6	County of Peterborough	N44.61157 W78.01442	0.5	600 x 600	F	Stop Sign	Ra-1	NE Corner		1410
628	West Kosh Road, County Road 6	County of Peterborough	N44.61158 W78.01439	1.5		P	Street Sign - West Kosh Road	G216	NE Corner		1411
629	West Kosh Road	HBM	N44.61333 W78.01034	1.0	750 x 750	P	Railway Crossing Ahead	Wc-4	South Side		1412
630	West Kosh Road	HBM	N44.61373 W78.00775	0.5	750 x 750	P	Railway Crossing Ahead	Wc-4	North Side		1413
631	West Kosh Road	HBM	N44.61373 W78.00775	0.5	600 x 450	P	tab: Poor Visibility		North Side		1413
632	West Kosh Road, Blue Mountain Road	HBM	N44.61597 W77.99560	2.0		F	Street Sign - Blue Mountain Road	G216	East Side		1414
633	West Kosh Road, Blue Mountain Road	HBM	N44.61597 W77.99560	2.0		F	Street Sign - West Kosh Road	G216	East Side		1414
634	West Kosh Road	HBM	N44.62348 W77.98737	2.0	600 x 600	P	Winding Road	Wa-6R	South Side	Move to just west of the train tracks... change tab to read "5km"	1416
635	West Kosh Road	HBM	N44.62348 W77.98737	2.0	600 x 600	P	tab: For 2 km	Wa-6t	South Side		1416
636	West Kosh Road, Stoney Point Road	HBM	N44.62438 W77.98483	2.5	900 x 900	G	Checkerboard <->	Wa-8LR	South Side		1417
637	West Kosh Road, Stoney Point Road	HBM	N44.62439 W77.98483	0.5		G	Street Sign - West Kosh Road	G216	South Side		1418
638	West Kosh Road, Stoney Point Road	HBM	N44.62439 W77.98483	0.5		G	Street Sign - Stoney Point Road	G216	South Side		1418
639	West Kosh Road, Stoney Point Road	HBM	N44.62451 W77.98494	0.5	600 x 600	G	Yield Sign	Ra-2	NW Corner		1419
640	West Kosh Road	HBM	N44.62996 W77.97951	1.0	600 x 600	P	Sharp Curve Ahead	Wa-2R	East Side		1420
641	West Kosh Road	HBM	N44.62996 W77.97951	1.0	450 x 450	P	tab: 15 MPH	Wa-7t	East Side	Update to Metric	1420
642	West Kosh Road, Holdcroft Road	HBM	N44.63022 W77.97911	0.5		G	Street Sign - Holdcroft Road	G216	West Side		1421
643	West Kosh Road, Holdcroft Road	HBM	N44.63022 W77.97911	0.5		G	Street Sign - West Kosh Road	G216	West Side		1421
644	West Kosh Road	HBM	N44.63022 W77.97911	NEW -----			Stop Sign	Ra-1	NE Corner	Uncontrolled intersection - FIX	
645	West Kosh Road	HBM	N44.62817 W77.97659	0.5	600 x 600	F	Hidden Driveway		South Side		1422
646	West Kosh Road	HBM	N44.62817 W77.97659	0.5	600 x 450	F	Cottage Watch		South Side		1422
647	Holdcroft Road	HBM	N44.63369 W77.97547	1.0	900 x 600	G	HBM Turnaround Sign		End		1423
648	West Kosh Road	HBM	N44.62501 W77.98532	5.0	900 x 900	F	Checkerboard <->	Wa-8L	West Side		1425
649	Stoney Point Road	HBM	N44.62440 W77.98368	1.0	750 x 750	F	Hidden Intersection		South Side		1426
650	Stoney Point Road	HBM	N44.62148 W77.97697	1.5	600 x 600	P	Winding Road	Wa-6L	South Side	Could be placed further west	1428
651	Stoney Point Road	HBM	N44.62148 W77.97697	1.5	450 x 450	P	tab: 40 km/h	Wa-7t	South Side		1428
652	Stoney Point Road	HBM	N44.62162 W77.97633	0.5	600 x 600	F	Checkerboard -->	Wa-8R	South Side	Smaller than normal, replace with regular sized checkerboard	1429

Sign Number	Road(s)	Jurisdiction (Assumed)	Location (Latitude and Longitude)	Offset from E <sub>t</sub>	Size (mm x mm)	Condition	Description	Replacement Code (MTO)	Location	Comments	Picture ID
653	Stoney Point Road	HBM	N44.62247 W77.97550	1.0	600 x 600	P	Sharp Turn	Wa-5R	West Side		1430
654	Stoney Point Road	HBM	N44.62215 W77.97379	2.0	750 x 750	F	Maximum Speed 40 km/h Ahead	Rb-5	South Side		1431
655	Stoney Point Road	HBM	N44.62215 W77.97379	2.0	600 x 200	F	km/h		South Side		1431
656	Stoney Point Road	HBM	N44.62163 W77.97234	0.5	750 x 600	F	Maximum Speed 40 km/h	Rb-3	South Side		1432
657	Stoney Point Road	HBM	N44.62163 W77.97234	0.5	600 x 200	F	tab (km/h)		South Side		1432
658	Stoney Point Road	HBM	N44.62163 W77.97234	0.5	600 x 200	F	tab (Begins)		South Side		1432
659	Stoney Point Road	HBM	N44.62167 W77.97225	0.5	750 x 600	F	Maximum Speed 40 km/h	Rb-1A	South Side		1433
660	Stoney Point Road	HBM	N44.62167 W77.97225	0.5	600 x 200	F	tab (km/h)		South Side		1433
661	Stoney Point Road	HBM	N44.62167 W77.97225	0.5	600 x 200	F	tab (Ends)	Rb-85t	South Side		1433
662	Stoney Point Road	HBM	N44.61584 W77.96933	1.0	750 x 600	F	Maximum Speed 40 km/h	Rb-3	North Side		1434
663	Stoney Point Road	HBM	N44.61584 W77.96933	1.0	600 x 200	F	tab (km/h)		North Side		1434
664	Stoney Point Road	HBM	N44.61584 W77.96933	1.0	600 x 200	F	tab (Begins)		North Side		1434
665	Blue Mountain Road, West Kosh Road	HBM	N44.61587 W77.99553	1.0	600 x 600	G	Yield Sign	Ra-2	NE Corner		1437
666	Shady Lane, County Road 52	HBM	N44.71883 W78.06558	0.5		G	Street Sign - Shady Lane	G216	West Side		1438
667	Shady Lane, County Road 52	HBM	N44.71898 W78.06545	0.5	600 x 600	G	Stop Sign	Ra-1	NE Corner		1439
668	Shady Lane	HBM	N44.71505 W78.05266	0.5	450 x 300	F	No Parking, Snow Plow Route	Rb-57	End		1440
669	54B1 (Cordova Mines - William Drive), 54B1 (Cordova Mines - Alfred Street East)	HBM	N44.53787 W77.79057	0.5		G	Street Sign - William Drive	G216	NW Corner		1443
670	54B1 (Cordova Mines - William Drive), 54B1 (Cordova Mines - Alfred Street East)	HBM	N44.53787 W77.79057	0.5		G	Street Sign - Alfred Street East	G216	NW Corner		1443
671	54B1 (Cordova Mines - William Drive), 54B1 (Cordova Mines - Alfred Street East)	HBM	N44.53794 W77.79059	0.5		G	Local Directions - Library ->	G216	NW Corner		1444
672	54B1 (Cordova Mines - William Drive), 54B1 (Cordova Mines - Alfred Street East)	HBM	N44.53794 W77.79059	0.5		G	Local Directions - Community Hall ->	G216	NW Corner		1444
673	54B1 (Cordova Mines - William Drive), County Road 48	HBM	N44.53864 W77.79103	1.5	600 x 600	G	Stop Sign	Ra-1	NE Corner		1445
674	54B1 (Cordova Mines - William Drive), County Road 48	County of Peterborough	N44.53863 W77.79115	1.5		G	Street Sign - William Drive	G216	NW Corner		1446
675	54B1 (Cordova Mines - William Drive), County Road 48	County of Peterborough	N44.53863 W77.79115	1.5		G	Street Sign - County Road 48	G216	NW Corner		1446
676	54B2 (Cordova Mines - Andrew Street), 54B2 (Cordova Mines - Andrew Street West)	HBM	N44.53656 W77.79539	3.0		G	Street Sign - Andrew Street	G216	SW Corner		1447
677	54B2 (Cordova Mines - Andrew Street), 54B2 (Cordova Mines - Andrew Street West)	HBM	N44.53656 W77.79539	3.0		G	Street Sign - Andrew Street West	G216	SW Corner		1447
678	54B2 (Cordova Mines - Andrew Street), County Road 48	County of Peterborough	N44.53738 W77.79582	1.0	600 x 600	G	Stop Sign	Ra-1	NE Corner		1449
679	54B2 (Cordova Mines - Andrew Street), County Road 48	County of Peterborough	N44.53739 W77.79596	1.5		G	Street Sign - Andrew Street	G216	NW Corner		1450
680	Mary Street	HBM	N44.43487 W77.87277	1.0	450 x 450	G	No Exit	Wa-31	East Side		1452
681	Mary Street, County Road 48, George Street East	County of Peterborough	N44.43469 W77.87283	1.0	600 x 600	G	Stop Sign	Ra-1	NW Corner		1453
682	Mary Street, County Road 48, George Street East	County of Peterborough	N44.43468 W77.87283	1.3		G	Street Sign - George Street	G216	NW Corner		1454
683	Mary Street, County Road 48, George Street East	County of Peterborough	N44.43468 W77.87283	1.3		G	Street Sign - Mary Street	G216	NW Corner		1454
684	William Street, Ottawa Street East	HBM	N44.43361 W77.87708	0.5	750 x 750	G	Stop Sign	Ra-101	NW Corner		1455
685	William Street, Ottawa Street East	HBM	N44.43358 W77.87710	0.5		G	Street Sign - William Street		NW Corner		1456
686	William Street, Ottawa Street East	HBM	N44.43358 W77.87710	0.5		G	Street Sign - Ottawa Street		NW Corner		1456
687	William Street, George Street East	County of Peterborough	N44.43450 W77.87697	2.5	600 x 600	G	Stop Sign	Ra-1	SE Corner		1458
688	William Street, George Street East	County of Peterborough	N44.43462 W77.87700	2.5		G	Street Sign - George Street East		NE Corner		1459
689	William Street, George Street East	County of Peterborough	N44.43462 W77.87700	2.5		G	Street Sign - William Street		NE Corner		1459
690	William Street, George Street East	County of Peterborough	N44.43462 W77.87700	2.5		G	Local Directions - <-Arena & Ball Park		NE Corner		1459

Sign Number	Road(s)	Jurisdiction (Assumed)	Location (Latitude and Longitude)	Offset from E <sub>t</sub>	Size (mm x mm)	Condition	Description	Replacement Code (MTO)	Location	Comments	Picture ID
691	William Street, George Street East	County of Peterborough	N44.43461 W77.87718	2.0	600 x 600	G	Stop Sign	Ra-1	NW Corner		1460
692	William Street, Mathison Street East	HBM	N44.43537 W77.87703	3.0	600 x 600	G	Stop Sign	Ra-1	SE Corner		1461
693	William Street, Mathison Street East	HBM	N44.43537 W77.87703	3.0	300 x 150	G	tab: All Way	Ra-1t	SE Corner		1461
694	William Street, Mathison Street East	HBM	N44.43551 W77.87706	3.0		G	Street Sign - William Street		NE Corner		1462
695	William Street, Mathison Street East	HBM	N44.43551 W77.87706	3.0		G	Street Sign - Mathison Street East		NE Corner		1462
696	William Street	HBM	N44.43554 W77.87704	2.5		G	No Exit	Wa-31	East Side		1463
697	William Street, Mathison Street East	HBM	N44.43551 W77.87719	2.5	600 x 600	G	Stop Sign	Ra-1	NE Corner	missing tab	1464
698	William Street, Mathison Street East	HBM	N44.43551 W77.87719	NEW			tab: All Way	Ra-1t	NE Corner	add tab	1464
699	Mathison Street East, William Street	HBM	N44.43551 W77.87704	1.0	600 x 600	G	Stop Sign	Ra-1	NW Corner		1467
700	Mathison Street East, William Street	HBM	N44.43551 W77.87704	1.0	300 x 150	G	tab: All Way	Ra-1t	NW Corner		1467
701	Mathison Street East, William Street	HBM	N44.43536 W77.87726	1.0	600 x 600	G	Stop Sign	Ra-1	SW Corner		1468
702	Mathison Street East, William Street	HBM	N44.43536 W77.87726	1.0	300 x 150	G	tab: All Way	Ra-1t	SW Corner		1468
703	Mathison Street East	HBM	N44.43535 W77.87752	0.5	600 x 600	G	Do Not Block Turning Buses		South Side		1469
704	Mathison Street East, Park Street	HBM	N44.43541 W77.87871	0.0	600 x 600	G	Stop Sign	Ra-1	NE Corner		1470
705	Mathison Street East, Park Street	HBM	N44.43541 W77.87878	0.0		G	Street Sign - Mathison Street East		North Side		1471
706	Mathison Street East, Park Street	HBM	N44.43541 W77.87878	0.0		G	Street Sign - Park Street		North Side		1471
707	Mathison Street East, Park Street	HBM	N44.43534 W77.87896	0.0	600 x 600	G	Stop Sign	Ra-1	SW Corner		1472
708	Mathison Street East, School Entrance	HBM	N44.43552 W77.87823	0.5	600 x 600	G	Stop Sign	Ra-1	NW Corner		1474
709	Mathison Street East, School Entrance	HBM	N44.43555 W77.87823	0.5	600 x 600	G	Do Not Block Turning Buses		NW Corner		1475
710	Mathison Street East, Arena Entrance	HBM	N44.43540 W77.88006	0.0	600 x 600	G	Stop Sign	Ra-1	NE Corner		1477
711	Park Street, Mathison Street East	HBM	N44.43527 W77.87879	0.0	600 x 600	G	Stop Sign	Ra-1	SE Corner		1478
712	Park Street, George Street East	County of Peterborough	N44.43460 W77.87887	0.0	600 x 600	G	Stop Sign	Ra-1	NW Corner		1480
713	Park Street, George Street East	County of Peterborough	N44.43458 W77.87873	0.0		G	Street Sign - Park Street		NE Corner		1481
714	Park Street, George Street East	County of Peterborough	N44.43458 W77.87873	0.0		G	Street Sign - George Street East		NE Corner		1481
715	Mill Lane, George Street East	County of Peterborough	N44.43434 W77.88099	0.5		G	Street Sign - George Street East		SE Corner		1482
716	Mill Lane, George Street East	County of Peterborough	N44.43434 W77.88099	0.5		G	Street Sign - Mill Lane		SE Corner		1482
717	Mill Lane, George Street East	County of Peterborough	N44.43437 W77.88098	0.5	600 x 600	G	Stop Sign	Ra-1	SE Corner		1483
718	Mill Lane, Ottawa Street East	HBM	N44.43346 W77.88103	0.5	750 x 750	G	Stop Sign	Ra-101	NW Corner		1484
719	Mill Lane, Ottawa Street East	HBM	N44.43345 W77.88104	0.5		G	Street Sign - Mill Lane		NW Corner		1485
720	Mill Lane, Ottawa Street East	HBM	N44.43345 W77.88104	0.5		G	Street Sign - Ottawa Street		NW Corner		1485
721	Orange Lane, Ottawa Street East	HBM	N44.43341 W77.88215	0.5	750 x 750	G	Stop Sign	Ra-101	NW Corner		1486
722	Orange Lane, Ottawa Street East	HBM	N44.43340 W77.88214	0.5		G	Street Sign - Orange Lane		NW Corner		1487
723	Orange Lane, Ottawa Street East	HBM	N44.43340 W77.88214	0.5		G	Street Sign - Ottawa Street		NW Corner		1487
724	Orange Lane, George Street East	County of Peterborough	N44.43430 W77.88209	0.5	600 x 600	F	Stop Sign	Ra-1	NE Corner		1489
725	Orange Lane, George Street East	County of Peterborough	N44.43443 W77.88217	1.0		G	Street Sign - Orange Lane		North Side		1490
726	Orange Lane, George Street East	County of Peterborough	N44.43443 W77.88217	1.0		G	Street Sign - George Street East		North Side		1490
727	Orange Lane, George Street East	County of Peterborough	N44.43443 W77.88217	1.0		G	Local Directions - Arena & Ball Park-->		North Side		1490
728	Victoria Street, George Street East	County of Peterborough	N44.43444 W77.88298	0.5	600 x 600	F	Stop Sign	Ra-1	NW Corner		1491
729	Victoria Street, George Street East	County of Peterborough	N44.43443 W77.88298	0.5		G	Street Sign - Victoria Street		NW Corner		1492
730	Victoria Street, George Street East	County of Peterborough	N44.43443 W77.88298	0.5		G	Street Sign - George Street East		NW Corner		1492
731	Victoria Street, Mathison Street East	HBM	N44.43534 W77.88306	0.5		G	Street Sign - Victoria Street		NW Corner		1494
732	Victoria Street, Mathison Street East	HBM	N44.43534 W77.88306	0.5		G	Street Sign - Mathison Street East		NW Corner		1494
733	Victoria Street, King Street East	HBM	N44.43609 W77.88301	0.5	600 x 600	G	Stop Sign	Ra-1	SE Corner		1495
734	King Street East, Arena Entrance	HBM	N44.43615 W77.88182	0.5	600 x 600	G	Stop Sign	Ra-1	SW Corner		1496
735	King Street East, Victoria Street	HBM	N44.43620 W77.88298	0.5	600 x 600	G	Stop Sign	Ra-1	NE Corner		1497
736	King Street East, Victoria Street	HBM	N44.43620 W77.88301	0.5		G	Street Sign - Victoria Street		North Side		1498
737	King Street East, Victoria Street	HBM	N44.43620 W77.88301	0.5		G	Street Sign - King Street East		North Side		1498
738	King Street East, Victoria Street	HBM	N44.43611 W77.88308	0.0	600 x 600	G	Stop Sign	Ra-1	SW Corner		1499



Sign Number	Road(s)	Jurisdiction (Assumed)	Location (Latitude and Longitude)	Offset from E <sub>t</sub>	Size (mm x mm)	Condition	Description	Replacement Code (MTO)	Location	Comments	Picture ID
739	King Street East, Oak Street	HBM	N44.43612 W77.88539	1.0	600 x 600	G	Stop Sign	Ra-1	NE Corner		1501
740	King Street East, Oak Street	HBM	N44.43612 W77.88539	1.0	600 x 600	G	tab: All Way	Ra-1t	NE Corner		1501
741	King Street East, Oak Street	HBM	N44.43612 W77.88546	1.0		G	Street Sign - King Street East/West		North Side		1502
742	King Street East, Oak Street	HBM	N44.43612 W77.88546	1.0		G	Street Sign - Oak Street		North Side		1502
743	King Street West, Oak Street	HBM	N44.43604 W77.88563	1.0	600 x 600	F	Stop Sign	Ra-1	SW Corner	missing 3-way tab	1503
744	King Street West, Oak Street	HBM	N44.43604 W77.88563	NEW			tab: All Way	Ra-1t	SW Corner		1503
745	King Street West	HBM	N44.43608 W77.88598	1.0	300 x 300	G	No Parking	Rb-51	North Side		1504
746	King Street West, Quebec Street	HBM	N44.43610 W77.88748	1.5		G	Street Sign - King Street West		North Side		1505
747	King Street West, Quebec Street	HBM	N44.43610 W77.88748	1.5		G	Street Sign - Quebec Street		North Side		1505
748	King Street West, Union Street	HBM	N44.43603 W77.88865	0.5		G	Street Sign - King Street West		NE Corner		1506
749	King Street West, Union Street	HBM	N44.43603 W77.88865	0.5		G	Street Sign - Union Street		NE Corner		1506
750	Alexander Street, Concession Street	County of Peterborough	N44.43467 W77.89298	0.5	600 x 600	G	Stop Sign	Ra-1	NE Corner		1509
751	Alexander Street, Concession Street	County of Peterborough	N44.43468 W77.89301	0.5		G	Street Sign - Concession Street		NE Corner		1510
752	Alexander Street, Concession Street	County of Peterborough	N44.43468 W77.89301	0.5		G	Street Sign - Alexander Street		NE Corner		1510
753	Princess Street, Concession Street	County of Peterborough	N44.43144 W77.89177	1.0	750 x 750	G	Stop Sign	Ra-101	SW Corner		1512
754	Princess Street, Concession Street	County of Peterborough	N44.43134 W77.89171	1.0		G	Street Sign - Concession Street		NW Corner		1513
755	Princess Street, Concession Street	County of Peterborough	N44.43134 W77.89171	1.0		G	Street Sign - Princess Street		NW Corner		1513
756	Pomeroy Drive, Concession Street	County of Peterborough	N44.42657 W77.88945	1.0	600 x 600	G	Stop Sign	Ra-1	SW Corner		1514
757	Pomeroy Drive, Concession Street	County of Peterborough	N44.42656 W77.88944	2.0		G	Street Sign - Pomeroy Drive		SW Corner		1515
758	Ottawa Street West, Concession Street	County of Peterborough	N44.43318 W77.89269	1.0		G	Street Sign - Concession Street		NW Corner		1518
759	Ottawa Street West, Concession Street	County of Peterborough	N44.43318 W77.89269	1.0		G	Street Sign - Ottawa Street		NW Corner		1518
760	Ottawa Street West, Concession Street	County of Peterborough	N44.43290 W77.89250	2.0	450 x 450	P	Blazer - Regional Rd 30	M110	SW Corner		1519
761	Ottawa Street West, Concession Street	County of Peterborough	N44.43290 W77.89250	2.0	450 x 450	P	tab: South ^	M307	SW Corner		1519
762	Ottawa Street West, Concession Street	County of Peterborough	N44.43290 W77.89250	2.0	450 x 450	P	Crown - Highway 7	M104	SW Corner		1519
763	Ottawa Street West, Concession Street	County of Peterborough	N44.43290 W77.89250	2.0	450 x 450	P	tab: East <--	M311	SW Corner		1519
764	Ottawa Street West, Concession Street	County of Peterborough	N44.43290 W77.89250	2.0	450 x 450	P	Crown - Highway 7	M104	SW Corner		1519
765	Ottawa Street West, Concession Street	County of Peterborough	N44.43290 W77.89250	2.0	450 x 450	P	tab: West -->	M314	SW Corner		1519
766	Ottawa Street West, Concession Street	County of Peterborough	N44.43291 W77.89259	2.0	600 x 1200	G	^ Cambellford 11	G307	SW Corner		1520
767	Ottawa Street West, Concession Street	County of Peterborough	N44.43291 W77.89259	2.0	600 x 1200	G	Peterborough 42	G307	SW Corner		1520
768	Ottawa Street West	HBM	N44.43294 W77.89286	2.0	450 x 900	G	<-- Peterborough Road 46	G205	South Side		1521
769	Ottawa Street West	HBM	N44.43294 W77.89286	2.0	300 x 900	G	<Oak Lake 21	G307	South Side		1521
770	Ottawa Street West	HBM	N44.43291 W77.89323	2.0	450 x 450	F	Crown - Highway 7	M104	South Side		1522
771	Ottawa Street West	HBM	N44.43291 W77.89323	2.0	450 x 450	F	tab: East ^	M311	South Side		1522
772	Ottawa Street West	HBM	N44.43291 W77.89323	2.0	450 x 450	F	Blazer - Regional Rd 30	M110	South Side		1522
773	Ottawa Street West	HBM	N44.43291 W77.89323	2.0	450 x 450	F	tab: South -->	M307	South Side		1522
774	Ottawa Street West	HBM	N44.43289 W77.89355	3.5	750 x 600	F	No Parking < >	Rb-51	South Side		1523
775	Ottawa Street West	HBM	N44.43291 W77.89373	3.5	600 x 1200	G	^ Ottawa	G307	South Side		1524
776	Ottawa Street West	HBM	N44.43291 W77.89373	3.5	600 x 1200	G	Cambellford -->	G307	South Side		1524
777	Ottawa Street West	HBM	N44.43288 W77.89402	3.5	750 x 600	F	No Parking < >	Rb-51	South Side		1525
778	Ottawa Street West	HBM	N44.43287 W77.89447	3.5	750 x 600	F	No Parking < >	Rb-51	South Side		1526
779	Ottawa Street West	HBM	N44.43285 W77.89499	3.5	450 x 450	P	Crown - Highway 7	M104	South Side		1527
780	Ottawa Street West	HBM	N44.43285 W77.89499	3.5	450 x 450	P	tab: East ^	M311	South Side		1527
781	Ottawa Street West	HBM	N44.43285 W77.89499	3.5	450 x 450	F	Blazer - Regional Rd 30	M110	South Side		1527
782	Ottawa Street West	HBM	N44.43285 W77.89499	3.5	450 x 450	F	tab: South ↖	M306	South Side		1527
783	Ottawa Street West	HBM	N44.43281 W77.89566	1.0	300 x 900	F	Hazard Sign	Wa-33R	South Side		1528
784	Ottawa Street West	HBM	N44.43275 W77.89602	3.0	900 x 900	F	Traffic Lights Ahead	Wb-102	South Side		1529
785	Ottawa Street West	HBM	N44.43300 W77.89524	3.0	1200 x 2400	F	Left-Turning Vehicles in Centre Lane		North Side		1530
786	Ottawa Street West	HBM	N44.43302 W77.89448	3.0	750 x 750	G	Slight Curve Ahead	Wa-103L	North Side		1531

Sign Number	Road(s)	Jurisdiction (Assumed)	Location (Latitude and Longitude)	Offset from E <sub>t</sub>	Size (mm x mm)	Condition	Description	Replacement Code (MTO)	Location	Comments	Picture ID
787	Ottawa Street West	HBM	N44.43310 W77.89408	3.0	750 x 600	G	No Parking < >	Rb-51	North Side		1532
788	Ottawa Street West	HBM	N44.43308 W77.89376	3.5	457 x 450	G	Shield - Highway 7	M100	North Side		1533
789	Ottawa Street West	HBM	N44.43308 W77.89376	3.5	450 x 300	G	tab: West	M312	North Side		1533
790	Ottawa Street West	HBM	N44.43308 W77.89376	3.5	600 x 450	P	Trans Canada Route	M111	North Side		1533
791	Ottawa Street West	HBM	N44.43308 W77.89366	3.5	750 x 600	F	No Parking < >	Rb-51	North Side		1534
792	Ottawa Street West	HBM	N44.43310 W77.89348	3.5	1200 x 1200	P	Railway Crossing Ahead	Wc-4	North Side		1535
793	Ottawa Street West	HBM	N44.43296 W77.89115	3.0	750 x 600	P	Maximum Speed 50 km/h	Rb-1A	South Side		1538
794	Ottawa Street West	HBM	N44.43296 W77.89115	3.0	300 x 600	P	tab: km/h		South Side		1538
795	Ottawa Street West	HBM	N44.43295 W77.89149	3.0	1200 x 900	G	Through Traffic Keep Right	Rb-127	South Side		1539
796	Ottawa Street West, Concession Street	County of Peterborough	N44.43282 W77.89210	3.0		G	Street Sign - Concession Street	G216	SE Corner		1540
797	Ottawa Street West, Concession Street	County of Peterborough	N44.43282 W77.89210	3.0		G	Street Sign - Ottawa Street	G216	SE Corner		1540
798	Ottawa Street West	HBM	N44.43312 W77.89174	3.0	600 x 600	G	No Parking < >	Rb-51	North Side		1541
799	Ottawa Street West	HBM	N44.43312 W77.89174	3.0	450 x 450	P	Blazer - County Road 30	M110	North Side		1542
800	Ottawa Street West	HBM	N44.43312 W77.89174	3.0	450 x 450	P	tab: South <--	M307	North Side		1542
801	Ottawa Street West	HBM	N44.43312 W77.89174	3.0	450 x 450	P	Crown - Highway 7	M104	North Side		1542
802	Ottawa Street West	HBM	N44.43312 W77.89174	3.0	450 x 450	P	tab: West ^	M314	North Side		1542
803	Ottawa Street West	HBM	N44.43312 W77.89174	3.0	300 x 1200	F	Oak Lake >	G307	North Side		1542
804	Ottawa Street West	HBM	N44.43317 W77.89123	3.0	450 x 450	G	No Parking < >	Rb-51	North Side		x
805	Ottawa Street West	HBM	N44.43319 W77.89084	3.0	600 x 600	G	No Parking < >	Rb-51	North Side		1543
806	Ottawa Street West	HBM	N44.43319 W77.89084	3.0	600 x 600	P	Right Lane Must Exit	Rb-42	North Side		1543
807	Ottawa Street West	HBM	N44.43319 W77.89084	3.0	600 x 300	P	tab: Right Lane Must Exit		North Side		1543
808	Ottawa Street West	HBM	N44.43318 W77.89034	3.0	600 x 600	G	No Parking < >	Rb-51	North Side		1544
809	Ottawa Street West	HBM	N44.43318 W77.89006	3.0	900 x 600	F	Maximum Speed 50 km/h	Rb-1A	North Side		1545
810	Ottawa Street West	HBM	N44.43319 W77.88987	3.0	600 x 600	G	No Parking < >	Rb-51	North Side		1546
811	Ottawa Street West	HBM	N44.43319 W77.88983	3.0	450 x 450	P	Blazer - County Road 30	M110	North Side		1547
812	Ottawa Street West	HBM	N44.43319 W77.88983	3.0	450 x 300	F	tab: ↯	M301	North Side		1547
813	Ottawa Street West	HBM	N44.43319 W77.88983	3.0	450 x 450	P	Shield - Highway 7	M100	North Side		1547
814	Ottawa Street West	HBM	N44.43319 W77.88983	3.0	450 x 300	F	tab: ^	M301	North Side		1547
815	Ottawa Street West	HBM	N44.43320 W77.88965	3.0	450 x 450	P	No Parking < >	Rb-51	North Side	Redundant - Remove	1548
816	Ottawa Street West	HBM	N44.43320 W77.88965	3.0	750 x 600	P	No Parking < >	Rb-51	North Side		1549
817	Ottawa Street West	HBM	N44.43320 W77.88965	3.0	750 x 600	F	Traffic Lights Ahead	Wb-102	North Side		1549
818	Ottawa Street West	HBM	N44.43320 W77.88946	3.0	600 x 600	G	No Parking < >	Rb-51	North Side		1557
819	Ottawa Street West	HBM	N44.43320 W77.88946	3.0	750 x 600	P	Right Lane Must Exit		North Side		1557
820	Ottawa Street West	HBM	N44.43323 W77.88887	3.0	600 x 600	F	No Parking < >	Rb-51	North Side		1551
821	Ottawa Street West	HBM	N44.43327 W77.88810	3.0	600 x 600	G	No Parking < >	Rb-51	North Side		1552
822	Ottawa Street West	HBM	N44.43312 W77.88673	3.5	300 x 300	P	No Parking < >	Rb-51	South Side		1553
823	Ottawa Street West	HBM	N44.43308 W77.88718	3.5	300 x 300	G	No Parking < >	Rb-51	South Side		1554
824	Ottawa Street West	HBM	N44.43303 W77.88920	3.5	300 x 300	P	No Parking < >	Rb-51	South Side		1555
825	Ottawa Street West	HBM	N44.43303 W77.88920	3.5	750 x 600	P	Through Traffic Keep Right		South Side		1556
826	Ottawa Street West	HBM	N44.43318 W77.88523	1.5	1200 x 1200	P	Squeeze Left		South Side		1558
827	Ottawa Street West	HBM	N44.43316 W77.88524	1.5	450 x 300	P	No Parking < >	Rb-51	South Side		1561
828	Ottawa Street East	HBM	N44.43334 W77.88463	1.5	450 x 300	G	No Parking < >	Rb-51	North Side		1562
829	Ottawa Street East	HBM	N44.43334 W77.88497	1.5	450 x 300	G	No Parking < >	Rb-51	North Side		x
830	Ottawa Street East	HBM	N44.43339 W77.88245	1.5	450 x 300	G	No Parking < >	Rb-51	North Side		x
831	Ottawa Street East	HBM	N44.43355 W77.87731	1.0	900 x 600	F	Maximum Speed 50 km/h	Rb-1A	North Side		1563
832	Ottawa Street East	HBM	N44.43344 W77.87794	1.0	900 x 600	F	Maximum Speed 50 km/h	Rb-1A	South Side		1564
833	Ottawa Street East	HBM	N44.43355 W77.87325	3.0	450 x 1200	P	<--Peterborough Road 48	G205	South Side		1565
834	Ottawa Street East	HBM	N44.43355 W77.87325	3.0	300 x 1200	P	Mary St -->	G205	South Side		1565

Sign Number	Road(s)	Jurisdiction (Assumed)	Location (Latitude and Longitude)	Offset from E <sub>t</sub>	Size (mm x mm)	Condition	Description	Replacement Code (MTO)	Location	Comments	Picture ID
835	Ottawa Street East	HBM	N44.43370 W77.87302	2.5	457 x 450	P	Highway 7 Shield	M100	North Side	Missing cardinal direction	1566
836	Ottawa Street East	HBM	N44.43370 W77.87302	NEW -----			tab: West	M312	North Side		
837	Ottawa Street East	HBM	N44.43370 W77.87302	2.5	457 x 450	P	Trans Canada Route	M111	North Side		1566
838	Mathison Street West, Quebec Street	HBM	N44.43518 W77.88759	0.5	600 x 600	G	Stop Sign	Ra-1	SW Corner		1569
839	Mathison Street West, Quebec Street	HBM	N44.43525 W77.88735	1.0		G	Street Sign - Mathison Street West		NE Corner		1570
840	Mathison Street West, Quebec Street	HBM	N44.43525 W77.88735	1.0		G	Street Sign - Quebec Street		NE Corner		1570
841	Mathison Street West, Quebec Street	HBM	N44.43526 W77.88733	0.5	600 x 600	G	Stop Sign	Ra-1	NE Corner		1571
842	Mathison Street West, Oak Street	HBM	N44.43520 W77.88558	0.5	600 x 600	F	Stop Sign	Ra-1	SW Corner		1572
843	Mathison Street East, Oak Street	HBM	N44.43533 W77.88534	0.5		G	Street Sign - Oak Street		NE Corner		1573
844	Mathison Street East, Oak Street	HBM	N44.43533 W77.88534	0.5		G	Street Sign - Mathison Street East/West		NE Corner		1573
845	Mathison Street East, Oak Street	HBM	N44.43533 W77.88533	0.5	600 x 600	F	Stop Sign	Ra-1	NE Corner		1574
846	Mathison Street East, Victoria Street	HBM	N44.43527 W77.88308	0.5	600 x 600	F	Stop Sign	Ra-1	SW Corner		1575
847	Oak Street, Ottawa Street West	HBM	N44.43338 W77.88548	1.0	750 x 750	G	Stop Sign	Ra-101	NW Corner		1578
848	Oak Street, Ottawa Street East	HBM	N44.43337 W77.88529	1.0		G	Street Sign - Oak Street		NE Corner		1579
849	Oak Street, Ottawa Street East	HBM	N44.43337 W77.88529	1.0		G	Street Sign - Ottawa Street		NE Corner		1579
850	Oak Street, Ottawa Street East	HBM	N44.43337 W77.88529	1.0		G	Local Directions - <- Arena & Ball Park		NE Corner		1579
851	Oak Street	HBM	N44.43365 W77.88525	3.0	450 x 300	G	Parking 2 Hours	Rb-53	East Side		1580
852	Oak Street	HBM	N44.43399 W77.88529	3.0	450 x 300	G	Parking 2 Hours	Rb-53	East Side		1581
853	Oak Street, George Street East	County of Peterborough	N44.43422 W77.88529	1.0	600 x 600	G	Stop Sign	Ra-1	SE Corner		1582
854	Oak Street, George Street East	County of Peterborough	N44.43422 W77.88529	1.0	300 x 150	G	tab: All Way	Ra-1t	SE Corner		1582
855	Oak Street, George Street East	County of Peterborough	N44.43433 W77.88525	1.0	600 x 600	G	Stop Sign	Ra-1	NE Corner		1583
856	Oak Street, George Street East	County of Peterborough	N44.43433 W77.88525	1.0	300 x 150	G	tab: All Way	Ra-1t	NE Corner		1583
857	Oak Street, George Street West	County of Peterborough	N44.43433 W77.88553	1.0	600 x 600	G	Stop Sign	Ra-1	NW Corner		1584
858	Oak Street, George Street West	County of Peterborough	N44.43433 W77.88553	1.0	300 x 150	G	tab: All Way	Ra-1t	NW Corner		1584
859	Oak Street, George Street West	County of Peterborough	N44.43424 W77.88555	1.0	600 x 600	G	Stop Sign	Ra-1	SW Corner	Missing ALL WAY sign	1585
860	Oak Street, George Street West	County of Peterborough	N44.43424 W77.88555	NEW -----			tab: All Way	Ra-1t	SW Corner		1585
861	Oak Street, George Street West	County of Peterborough	N44.43436 W77.88554	2.0		G	Local Directions - <- Arena & Ball Park		NW Corner		1586
862	Oak Street, George Street West	County of Peterborough	N44.43436 W77.88554	2.0		G	Street Sign - George Street		NW Corner		1586
863	Oak Street, George Street West	County of Peterborough	N44.43436 W77.88554	2.0		G	Street Sign - Oak Street		NW Corner		1586
864	Oak Street, King Street East	HBM	N44.43610 W77.88542	0.5	600 x 600	G	Stop Sign	Ra-1	SE Corner		1587
865	Oak Street, King Street East	HBM	N44.43610 W77.88542	0.5	300 x 150	G	tab: 3 Way	Ra-1t	SE Corner		1587
866	Quebec Street, King Street West	HBM	N44.43592 W77.88747	1.0	600 x 600	G	Stop Sign	Ra-1	SW Corner		1589
867	Quebec Street	HBM	N44.43467 W77.88751	1.0	600 x 450	G	Handicap Parking	Rb-93	West Side		1590
868	Quebec Street	HBM	N44.43456 W77.88750	1.0	600 x 450	G	Parking 2 Hours	Rb-53	West Side		1591
869	Quebec Street	HBM	N44.43428 W77.88746	1.0	600 x 450	G	Parking 2 Hours	Rb-53	West Side		1593
870	Quebec Street, George Street West	County of Peterborough	N44.43425 W77.88746	1.0		G	Street Sign - George Street West		West Side		1594
871	Quebec Street, George Street West	County of Peterborough	N44.43425 W77.88746	1.0		G	Street Name - Quebec Street		West Side		1594
872	Quebec Street, Ontario Street	County of Peterborough	N44.43373 W77.88745	0.0	600 x 600	G	Stop Sign	Ra-1	SW Corner		1595
873	Quebec Street, Ontario Street	County of Peterborough	N44.43387 W77.88749			G	Street Name - Ontario Street		NW Corner		1596
874	Quebec Street, Ontario Street	County of Peterborough	N44.43387 W77.88749			G	Street Name - Quebec Street		NW Corner		1596
875	Quebec Street	HBM	N44.43366 W77.88743	1.0	600 x 450	G	Parking 2 Hours	Rb-53	West Side		1597
876	Quebec Street	HBM	N44.43373 W77.88729	1.0	600 x 450	G	Parking 2 Hours	Rb-53	East Side		1598
877	Quebec Street, Ottawa Street West	HBM	N44.43333 W77.88742	0.5	750 x 750	G	Stop Sign	Ra-101	NW Corner		1599
878	Quebec Street, Ottawa Street West	HBM	N44.43329 W77.88725	1.0		G	Street Sign - Quebec Street		NE Corner		x
879	Quebec Street, Ottawa Street West	HBM	N44.43329 W77.88725	1.0		G	Street Sign - Ottawa Street West		NE Corner		x
880	Quebec Street, Ottawa Street West	HBM	N44.43329 W77.88725	1.0		G	Local Directions - <-Library		NE Corner		x
881	Queen Street, Blairton Road	HBM	N44.46556 W77.76330	1.0	600 x 600	G	Yield Sign	Ra-2	SW Corner		1602
882	Queen Street, Blairton Road	HBM	N44.46556 W77.76330	1.0	220 x 450	G	tab: Yield	Ra-2t	SW Corner		1602