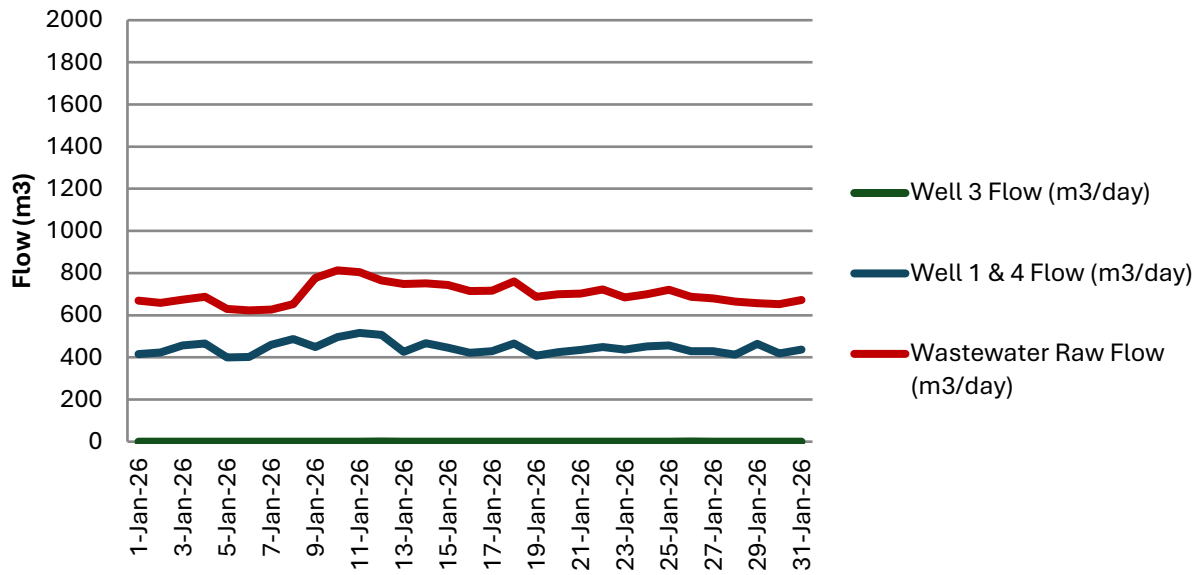


| Date           | Well 3 Flow<br>(m <sup>3</sup> /day) | Well 1 & 4 Flow<br>(m <sup>3</sup> /day) | Wastewater Raw<br>Flow (m <sup>3</sup> /day) |
|----------------|--------------------------------------|--|--|
| 1-Jan-26       | 0                                    | 416                                      | 670  |
| 2-Jan-26       | 0                                    | 424                                      | 659  |
| 3-Jan-26       | 0                                    | 457                                      | 674  |
| 4-Jan-26       | 0                                    | 466                                      | 687  |
| 5-Jan-26       | 0                                    | 400                                      | 630  |
| 6-Jan-26       | 0                                    | 402                                      | 623  |
| 7-Jan-26       | 0                                    | 460                                      | 626  |
| 8-Jan-26       | 0                                    | 487                                      | 653  |
| 9-Jan-26       | 0                                    | 449                                      | 777  |
| 10-Jan-26      | 0                                    | 496                                      | 813  |
| 11-Jan-26      | 0                                    | 516                                      | 804  |
| 12-Jan-26      | 1                                    | 506                                      | 765  |
| 13-Jan-26      | 0                                    | 426                                      | 748  |
| 14-Jan-26      | 0                                    | 467                                      | 751  |
| 15-Jan-26      | 0                                    | 446                                      | 744  |
| 16-Jan-26      | 0                                    | 421                                      | 715  |
| 17-Jan-26      | 0                                    | 430                                      | 717  |
| 18-Jan-26      | 0                                    | 466                                      | 761  |
| 19-Jan-26      | 0                                    | 408                                      | 688  |
| 20-Jan-26      | 0                                    | 424                                      | 700  |
| 21-Jan-26      | 0                                    | 435                                      | 702  |
| 22-Jan-26      | 0                                    | 449                                      | 723  |
| 23-Jan-26      | 0                                    | 436                                      | 685  |
| 24-Jan-26      | 0                                    | 453                                      | 699  |
| 25-Jan-26      | 0                                    | 456                                      | 721  |
| 26-Jan-26      | 1                                    | 430                                      | 687  |
| 27-Jan-26      | 0                                    | 429                                      | 680  |
| 28-Jan-26      | 0                                    | 413                                      | 665  |
| 29-Jan-26      | 0                                    | 464                                      | 657  |
| 30-Jan-26      | 0                                    | 418                                      | 652  |
| 31-Jan-26      | 0                                    | 437                                      | 673  |
| <b>Min</b>     | <b>0</b>                             | <b>400</b>                               | <b>623</b>                                   |
| <b>Max</b>     | <b>1</b>                             | <b>516</b>                               | <b>813</b>                                   |
| <b>Average</b> | <b>0</b>                             | <b>445</b>                               | <b>702</b>                                   |

## Havelock Flow Data - January 2026



| Date           | Well 3 Flow<br>(m <sup>3</sup> /day) | Well 1 & 4 Flow<br>(m <sup>3</sup> /day) | Wastewater Raw<br>Flow (m <sup>3</sup> /day) |
|----------------|--------------------------------------|--|--|
| 1-Feb-26       | 0.00                                 | 458                                      | 688  |
| 2-Feb-26       | 2.00                                 | 413                                      | 659  |
| 3-Feb-26       | 0.00                                 | 436                                      | 635  |
| 4-Feb-26       | 0.00                                 | 458                                      | 644  |
| 5-Feb-26       | 0.00                                 | 436                                      | 653  |
| 6-Feb-26       | 0.00                                 | 415                                      | 640  |
| 7-Feb-26       | 0.00                                 | 446                                      | 659  |
| 8-Feb-26       | 0.00                                 | 426                                      | 662  |
| 9-Feb-26       | 1.00                                 | 510                                      | 635  |
| 10-Feb-26      | 0.00                                 | 411                                      | 627  |
| 11-Feb-26      | 0.00                                 | 400                                      | 634  |
| 12-Feb-26      | 0.00                                 | 488                                      | 624  |
| 13-Feb-26      | 0.00                                 | 414                                      | 620  |
| 14-Feb-26      | 0.00                                 | 434                                      | 654  |
| 15-Feb-26      | 0.00                                 | 509                                      | 644  |
| 16-Feb-26      | 0.00                                 | 538                                      | 663  |
| 17-Feb-26      | 1.00                                 | 441                                      | 638  |
| 18-Feb-26      | 0.00                                 | 392                                      | 647  |
| 19-Feb-26      | 0.00                                 | 487                                      | 618  |
| 20-Feb-26      | 0.00                                 | 431                                      | 639  |
| 21-Feb-26      | 0.00                                 | 480                                      | 665  |
| 22-Feb-26      | 0.00                                 | 453                                      | 661  |
| 23-Feb-26      | 1.00                                 | 420                                      | 619  |
| 24-Feb-26      | 0.00                                 | 443                                      | 635  |
| 25-Feb-26      | 0.00                                 | 441                                      | 612  |
| 26-Feb-26      | 0.00                                 | 437                                      | 611  |
| 27-Feb-26      | 0.00                                 | 440                                      | 620  |
| 28-Feb-26      | 0.00                                 | 485                                      | 677  |
| <b>Min</b>     | <b>0</b>                             | <b>392</b>                               | <b>611</b>                                   |
| <b>Max</b>     | <b>2</b>                             | <b>538</b>                               | <b>688</b>                                   |
| <b>Average</b> | <b>0</b>                             | <b>448</b>                               | <b>642</b>                                   |

## Havelock Flow Data - February 2026

